

PRINTABLE INFO SHEET

Series: Eastland Prime

Model: A12809-V Eastland Prime



About This Model

Style: Single / Bedrooms: 3 / Bathrooms: 2 / Square Feet: 1140

CUSTOMER CONTACT

Notes:

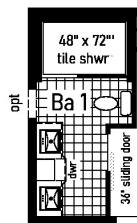
PRINTABLE INFO SHEET

Series: Eastland Prime

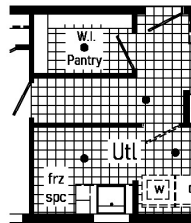
Model: A12809-V Eastland Prime



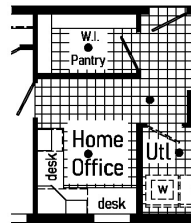
Floorplan



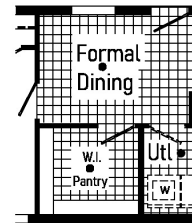
**Optional
4'x6' Walk-In
Tile Shower**



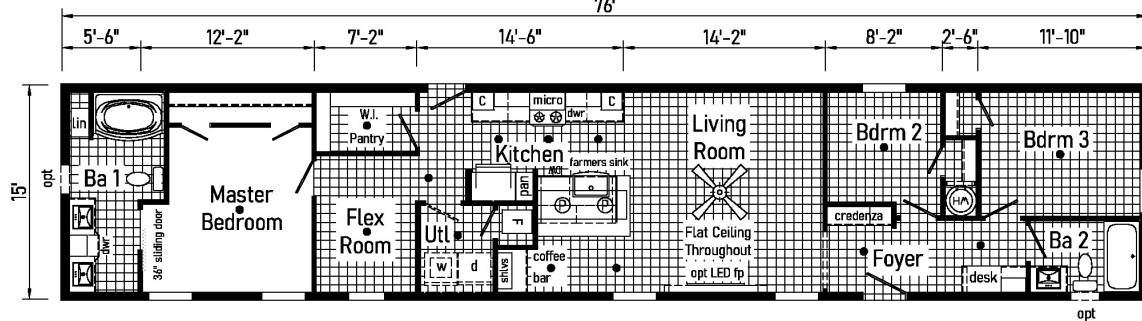
**Optional
Extended Laundry**
Replaces Flex Room



**Optional
Home Office**
Replaces Flex Room



**Optional
Formal Dining**
Replaces Flex Room



CUSTOMER CONTACT

Notes:

PRINTABLE INFO SHEET

Series: Eastland Prime

Model: A12809-V Eastland Prime



Standards & Features

INTERIOR

Stipple Ceiling

Cathedral Ceiling -Ranch

Flat Ceiling - Single Section

90" Sidewall Height -Ranch

8' Sidewall Height - Single Section

Vinyl Wall Coverings on Gypsum Walls

LED Flush Mount Ceiling Lights

Pre-Hung Door Jambs

Mortise Hinges

Metal Interior Passage Sets

Floor Mount Door Stops

Smoke Detectors With Battery Back-Up

Wire Shelving in Guest Closet

Window Treatments

2" Mini Blinds Throughout

White 6-Panel Passage Doors

Sliding Interior Door (per plan)

3 Industrial Pendant Lights over Island

Skyview Wall with Transoms (Ranch)

Ceiling Fan in Living Room

Foyer Accent Bench (per plan)and Wall

EXTERIOR

Black Lantern Light at Front & Rear Door

One GFI-Protected Exterior Receptacle

Vinyl Dutch Lap Siding

Sheathing Board Under Siding

Shingle Roof with

4" Eaves & Single Section (14/16)

10" Eaves & Ranch Homes (28/32)

12" Gable End Overhang

EXTERIOR (continued)

Ridgevent Roof Ventilation System

38x82 Steel 6-Panel Front Door

34x82 Steel 6-Panel Rear Door

Schlage Exterior Locksets Keyed Alike

Mulled Vinyl Insulated Windows w/Grids

12" Louvered Shutters on Front Side

CONSTRUCTION

2x6 Transverse Floor & 12/14 wide

2x8 Transverse Floor & 16 wide

2x6 Exterior Walls on 16" Centers**

3/4" T&G OSB Floor Decking

20# Roof Load

Recessed Frame Design

KITCHEN

Black Gold Appliance Package (Gas)

Black Over the Range Microwave

Curved Front Stainless Steel Sink

Full Ceramic Backsplash at Range Wall

4" Laminate Backsplash Window Wall

Structured Flow Pull Down Faucet

Cabinetry Accent

1 USB Receptacle

BATHS

Fiberglass Tub/Showers in Bath 2

Fiberglass Garden Tub/Shower in Master Bathroom
Framed Mirrors

2 Light Bath Fixture over Mirrors

1.6 Gallon Per Flush Elongated Toilets

Square China Lav Sinks

Double Lav Sinks in Master Bath

CUSTOMER CONTACT

Notes:

PRINTABLE INFO SHEET

Series: Eastland Prime

Model: A12809-V Eastland Prime



Standards & Features (continued)

Square China Lav Sinks (continued)

Laminate Backsplash in Baths

Cabinetry Accent

China Stool, Tank and Lid

Lighted Vent Fan in Each Bath

Empire Faucets

Anti-Scald Faucets in Tub/Shower

Shower Drain with Removable Strainer

CABINETRY

Evermore Custom Cabinetry

(KCMA Certified)

MDF Mission Style Cabinet Doors

Brushed Nickel Cabinet Hardware

Crown Moulding on Kitchen Cabinets

Lined Overhead Cabinets

Laminate Countertops

Transitional Cabinet Pulls

Concealed Cabinet Hinges

Soft Close Drawer Guides

Base and Center Shelves in Base Cabinets

Base Shelf in Vanities

36" High Bath Vanities

UTILITIES

Plumbed and Wired for Washer

Vented and Wired for Dryer

100 AMP Electrical Service

30 Gallon Electric Water Heater with Pan

Gas Furnace

White 6-Panel Door w/Grill

UTILITIES (continued)

Air Exchanger System for Furnace

Aluminum Heat Ducts

In-Floor Cross-Over Heating System

Copper Wiring Throughout

Main Water Line Shut-Off Valve

Programmable Thermostat

FLOORING

Choice of Various Styles of Textured

Carpet:

-Standard 18 oz. Lucerne/Innovations

-Upgrade Styles Available

Rebond Carpet Pad with Tackstrip

Carpet Installation

DiamondFlor & Vinyl Floor Coverings

Entry Foyer Vinyl

BEDROOMS

Switched Receptacle

Vinyl Wall Coverings in all Bedrooms

Egress Window Each Bedroom

Wire Shelving in Wardrobes

Switched Light in All Walk-In Closets

INSULATION

R-14 Fiberglass in Floor

R-19 Fiberglass in Walls

R-25 Avg. Blown in Ceiling -Single

R-28 Avg. Blown in Ceiling & Ranch

Modular Features

Note: Floorplan may be altered based on building code

Drywall

OSB Wrap

CUSTOMER CONTACT

Notes:

PRINTABLE INFO SHEET

Series: Eastland Prime

Model: A12809-V Eastland Prime



Standards & Features (continued)

Modular Features (continued)

Wind Wrap

40# Roof Load

Ice Guard

5/12 Roof Pitch

90 MPH Wind Zone C

2x10 Floor Joist 16" O.C.

2x4 Interior Walls

Architectural Shingles

Additional Exterior Receptacle

(1) Exterior Faucet

Low & E Gridded Windows w/ Argon

R-31 Ceiling Insulation

No Floor Insulation

Perimeter Heat

Water Shut Offs & Where Available

200 AMP Panel Box

Hi-Efficiency Furnace

Premium Cabinetry

Premium Moulding Package

No Blinds or Curtains

Structured Flow Faucets

Drawer over Door Cabinet Construction

Soft Close Cabinet Doors

Phone Jack

**Note Skyview Wall with Transoms Not Available

CUSTOMER CONTACT

Notes:
