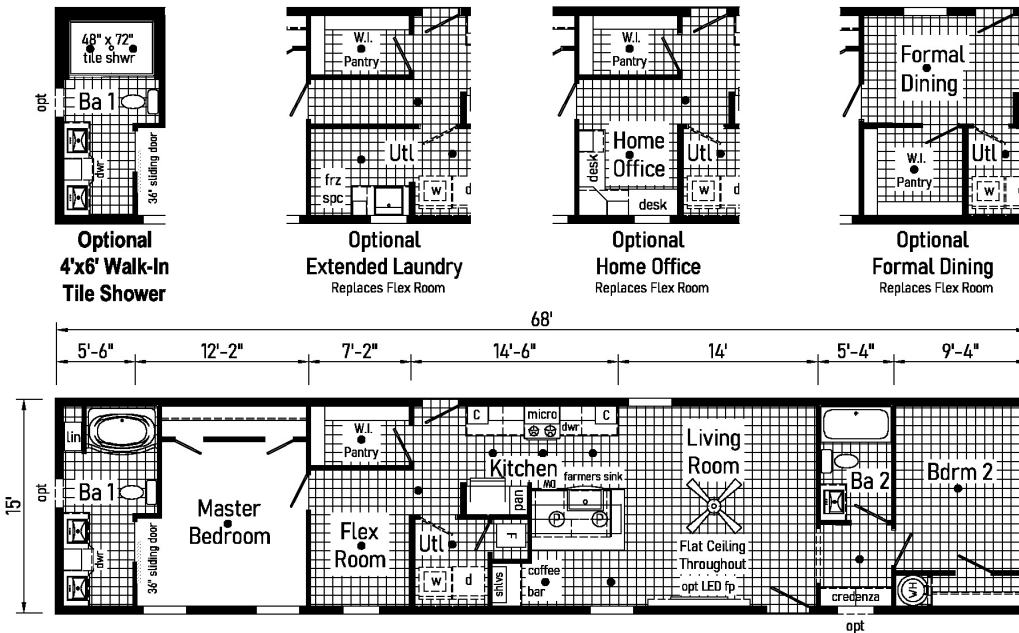


# PRINTABLE INFO SHEET

Series: Eastland Prime  
 Model: A12808-V Eastland Prime



## About This Model

Style: Single / Bedrooms: 2 / Bathrooms: 2 / Square Feet: 1020

## CUSTOMER CONTACT

Notes: \_\_\_\_\_  
 \_\_\_\_\_  
 \_\_\_\_\_  
 \_\_\_\_\_

# PRINTABLE INFO SHEET



**Series: Eastland Prime**  
**Model: A12808-V Eastland Prime**

## Standards & Features

### INTERIOR

- Stipple Ceiling
- Cathedral Ceiling -Ranch
- Flat Ceiling - Single Section
- 90" Sidewall Height -Ranch**
- 8' Sidewall Height - Single Section
- Vinyl Wall Coverings on Gypsum Walls
- LED Flush Mount Ceiling Lights
- Pre-Hung Door Jambs
- Mortise Hinges
- Metal Interior Passage Sets
- Floor Mount Door Stops
- Smoke Detectors With Battery Back-Up
- Wire Shelving in Guest Closet
- Window Treatments
- 2" Mini Blinds Throughout
- White 6-Panel Passage Doors

### Sliding Interior Door (per plan)

- 3 Industrial Pendant Lights over Island
- Skyview Wall with Transoms (Ranch)
- Ceiling Fan in Living Room
- Foyer Accent Bench (per plan)and Wall

### EXTERIOR

- Black Lantern Light at Front & Rear Door
- One GFI-Protected Exterior Receptacle
- Vinyl Dutch Lap Siding
- Sheathing Board Under Siding
- Shingle Roof with
- 4" Eaves & Single Section (14/16)
- 10" Eaves & Ranch Homes (28/32)
- 12" Gable End Overhang

### EXTERIOR (continued)

- Ridgevent Roof Ventilation System
- 38x82 Steel 6-Panel Front Door
- 34x82 Steel 6-Panel Rear Door
- Schlage Exterior Locksets Keyed Alike
- Mulled Vinyl Insulated Windows w/Grids
- 12" Louvered Shutters on Front Side

### CONSTRUCTION

- 2x6 Transverse Floor & 12/14 wide
- 2x8 Transverse Floor & 16 wide
- 2x6 Exterior Walls on 16" Centers\*\*
- 3/4" T&G OSB Floor Decking
- 20# Roof Load
- Recessed Frame Design

### KITCHEN

#### Black Gold Appliance Package (Gas)

- Black Over the Range Microwave
- Curved Front Stainless Steel Sink
- Full Ceramic Backsplash at Range Wall
- 4" Laminate Backsplash Window Wall
- Structured Flow Pull Down Faucet
- Cabinetry Accent
- 1 USB Receptacle

### BATHS

- Fiberglass Tub/Showers in Bath 2

#### Fiberglass Garden Tub/Shower in Master Bathroom

- Framed Mirrors

#### 2 Light Bath Fixture over Mirrors

- 1.6 Gallon Per Flush Elongated Toilets

#### Square China Lav Sinks

- Double Lav Sinks in Master Bath

## CUSTOMER CONTACT

Notes: \_\_\_\_\_

\_\_\_\_\_

\_\_\_\_\_

\_\_\_\_\_

# PRINTABLE INFO SHEET



**Series: Eastland Prime**  
**Model: A12808-V Eastland Prime**

## Standards & Features (continued)

### Square China Lav Sinks (continued)

Laminate Backsplash in Baths

### Cabinetry Accent

China Stool, Tank and Lid  
Lighted Vent Fan in Each Bath  
Empire Faucets  
Anti-Scald Faucets in Tub/Shower  
Shower Drain with Removable Strainer

### CABINETRY

Evermore Custom Cabinetry (KCMA Certified)  
MDF Mission Style Cabinet Doors  
Brushed Nickel Cabinet Hardware  
Crown Moulding on Kitchen Cabinets  
Lined Overhead Cabinets  
Laminate Countertops

### Transitional Cabinet Pulls

Concealed Cabinet Hinges  
Soft Close Drawer Guides  
Base and Center Shelves in Base Cabinets  
Base Shelf in Vanities  
36" High Bath Vanities

### UTILITIES

Plumbed and Wired for Washer  
Vented and Wired for Dryer  
100 AMP Electrical Service  
30 Gallon Electric Water Heater with Pan  
Gas Furnace  
White 6-Panel Door w/Grill

### UTILITIES (continued)

Air Exchanger System for Furnace  
Aluminum Heat Ducts  
In-Floor Cross-Over Heating System  
Copper Wiring Throughout  
Main Water Line Shut-Off Valve  
Programmable Thermostat

### FLOORING

Choice of Various Styles of Textured Carpet:  
-Standard 18 oz. Lucerne/Innovations  
-Upgrade Styles Available  
Rebond Carpet Pad with Tackstrip  
Carpet Installation  
DiamondFlor & Vinyl Floor Coverings

### Entry Foyer Vinyl

### BEDROOMS

Switched Receptacle  
Vinyl Wall Coverings in all Bedrooms  
Egress Window Each Bedroom  
Wire Shelving in Wardrobes  
Switched Light in All Walk-In Closets

### INSULATION

R-14 Fiberglass in Floor  
R-19 Fiberglass in Walls  
R-25 Avg. Blown in Ceiling -Single  
R-28 Avg. Blown in Ceiling & Ranch

### Modular Features

Note: Floorplan may be altered based on building code  
Drywall  
OSB Wrap

## CUSTOMER CONTACT

Notes:

---

---

---

---

## PRINTABLE INFO SHEET

**Series: Eastland Prime**  
**Model: A12808-V Eastland Prime**



## Standards & Features (continued)

### Modular Features (continued)

- Wind Wrap
- 40# Roof Load
- Ice Guard
- 5/12 Roof Pitch
- 90 MPH Wind Zone C
- 2x10 Floor Joist 16" O.C.
- 2x4 Interior Walls
- Architectural Shingles
- Additional Exterior Receptacle
- (1) Exterior Faucet
- Low & E Gridded Windows w/ Argon
- R-31 Ceiling Insulation
- No Floor Insulation
- Perimeter Heat
- Water Shut Offs & Where Available
- 200 AMP Panel Box
- Hi-Efficiency Furnace
- Premium Cabinetry
- Premium Moulding Package
- No Blinds or Curtains
- Structured Flow Faucets
- Drawer over Door Cabinet Construction
- Soft Close Cabinet Doors
- Phone Jack
- \*\*Note Skyview Wall with Transoms Not Available

## CUSTOMER CONTACT

Notes:

---

---

---

---