

PRINTABLE INFO SHEET

Series: Eastland Concepts Ranch

Model: A32106-P



About This Model

Style: Ranch / Bedrooms: 3 / Bathrooms: 2 / Square Feet: 1493

CUSTOMER CONTACT

Notes:

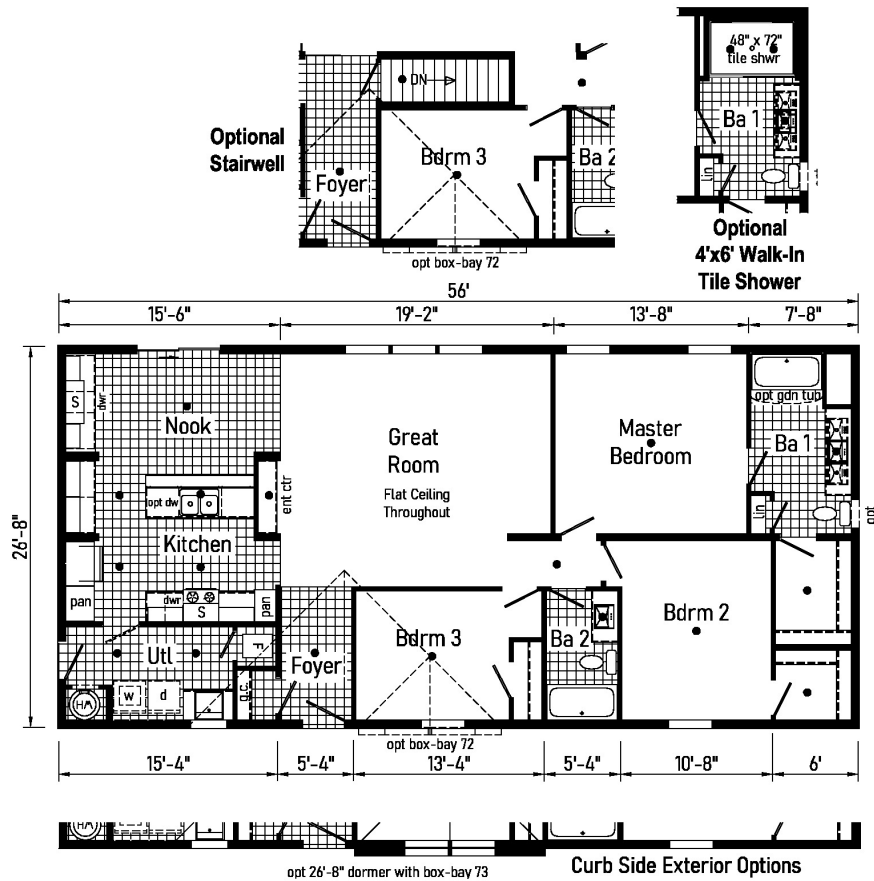
PRINTABLE INFO SHEET

Series: Eastland Concepts Ranch

Model: A32106-P



Floorplan



CUSTOMER CONTACT

Notes:

PRINTABLE INFO SHEET

Series: Eastland Concepts Ranch

Model: A32106-P



Standards & Features

INTERIOR

Flat Ceiling Throughout - Single
Cathedral Ceiling Throughout - Ranch
Stipple Ceiling
8' Sidewall Height - Single
7'6" Sidewall Height - Ranch
Vinyl Wall Coverings on Gypsum Walls
LED Flush Mount Ceiling Lights
Pre-Hung Door Jambs
Mortise Hinges
Metal Interior Passage Sets
Floor Mount Door Stops
Smoke Detectors With Battery Back-Up
Wire Shelving in Guest Closet
Window Treatments
2" Mini Blinds Throughout
White 6-Panel Passage Doors

EXTERIOR

Black Lantern Light - Front & Rear Door
One GFI-Protected Exterior Receptacle
Vinyl Dutch Lap Siding
Sheathing Board Under Siding
Shingle Roof with
4" Eaves & Single Section (14/16)
10" Eaves & Ranch Homes (28/32)
12" Gable End Overhang
Ridgevent Roof Ventilation System
38x82 Steel 6-Panel Front Door
34x82 Steel 6-Panel Rear Door

EXTERIOR (continued)

Schlage Exterior Locksets Keyed Alike
Mulled Vinyl Insulated Windows w/Grids
12" Raised Panel Shutters on Front Door Side

CONSTRUCTION

2x6 Transverse Floor & 12/14 wide
2x8 Transverse Floor & 16 wide
2x6 Exterior Walls on 16" Centers**
¾" T&G OSB Floor Decking
20# Roof Load
Recessed Frame Design

KITCHEN

30" Deluxe Black Gas Range
Power Range Hood with Light
18 Cubic Foot Black, No-Frost Refrigerator
Stainless Steel Sink - 33x19x7
Empire Hi-Rise Faucet
1 USB Receptacle

BATHS

60" Tub/Showers
1.6 Gallon Per Flush Elongated Toilets
China Stool, Tank and Lid
Lighted Vent Fan in Each Bath
Empire Faucets
Anti-Scald Faucets in Tub/Shower
Shower Drain with Removable Strainer

CABINETRY

Evermore Custom Cabinetry
(KCMA Certified)
MDF Mission Style Cabinet Doors
Brushed Nickel Cabinet Hardware

CUSTOMER CONTACT

Notes:

PRINTABLE INFO SHEET

Series: Eastland Concepts Ranch

Model: A32106-P



Standards & Features (continued)

CABINETRY (continued)

Crown Moulding on Kitchen Cabinets
Lined Overhead Cabinets
30" Staggered Height Overhead Cabinets
Laminate Countertops
Laminate Backsplashes
Concealed Cabinet Hinges
Soft Close Drawer Guides
Dovetail Drawers
Base and Center Shelves in Base Cabinets
Base Shelf in Vanities
36" High Bath Vanities

UTILITIES

Plumbed and Wired for Washer
Vented and Wired for Dryer
100 AMP Electrical Service w/ Extended Panel
30 Gallon Electric Water Heater with Pan
Gas Furnace
White 6-Panel Door w/Grill
Air Exchanger System for Furnace
Aluminum Heat Ducts
In-Floor Cross-Over Heating System
Copper Wiring Throughout
Main Water Line Shut-Off Valve
Programmable Thermostat

FLOORING

Choice of Various Styles of Textured

FLOORING (continued)

Carpet:
-Standard 18 oz. Lucerne/Innovations
-Upgrade Styles Available
Rebond Carpet Pad with Tackstrip
Carpet Installation
DiamondFlor & Vinyl Floor Coverings

BEDROOMS

Switched Receptacles
Vinyl Wall Coverings in all Bedrooms
Egress Window Each Bedroom
Wire Shelving in Wardrobes
Switched Light in All Walk-In Closets

INSULATION

R-14 Fiberglass in Floor
R-19 Fiberglass in Walls
R-25 Avg. Blown in Ceiling -Single
R-28 Avg. Blown in Ceiling & Ranch

MODULAR STANDARD FEATURES:

INTERIOR

Cathedral Ceiling Throughout
Stipple Ceiling
7'6" Sidewall Height
Drywall
LED Flush Mount Ceiling Lights
Pre-Hung Door Jambs
Mortise Hinges
Metal Interior Passage Sets
Floor Mount Door Stops
Smoke Detectors With Battery Back-Up

CUSTOMER CONTACT

Notes:

PRINTABLE INFO SHEET

Series: Eastland Concepts Ranch

Model: A32106-P



Standards & Features (continued)

INTERIOR (continued)

Wire Shelving in Guest Closet
White 6 Panel Passage Doors
Premium Moulding Package
Phone Jack

EXTERIOR

Black Lantern Light - Front & Rear Door
Two GFI-Protected Receptacles
One Exterior Faucet
Vinyl Dutch Lap Siding
OSB Wrap
Wind Wrap
5/12 Architectural Shingle Roof w/
10" Eaves
12" Gable End Overhang
Ice Guard
Ridgevent Roof Ventilation System
38x82 Steel 6-Panel Front Door
34x82 Steel 6-Panel Rear Door
Schlage Exterior Locksets Keyed Alike
Low-E Gridded Windows with Argon
12" Raised Panel Shutters on Front
Door Side

CONSTRUCTION

2x10 Floor Joist 16" O.C.
2x6 Exterior Walls on 16" Centers**
2x4 Interior Walls
3/4" T&G OSB Floor Decking
40# Roof Load
90 MPH Wind Zone C

KITCHEN

30" Deluxe Black Gas Range
Power Range Hood with Light
18 Cubic Foot Black, No-Frost Refrigerator
Stainless Steel Sink - 33x19x7
Structured Flow Hi-Rise Faucet
1 USB Receptacle

BATHS

One Piece Fiberglass 60" Tub/Showers
Framed Mirrors
1.6 Gallon Per Flush Elongated Toilets
China Stool, Tank and Lid
Square China Lav Sinks
Lighted Vent Fan in Each Bath
Structured Flow Faucets
Anti-Scald Faucets in Tub/Shower
Shower Drain with Removable Strainer

CABINETRY

Evermore Custom Cabinetry
(KCMA Certified)
Mission Style Cabinet Doors
Brushed Nickel Cabinet Hardware
Crown Moulding on Kitchen Cabinets
Lined Overhead Cabinets
30" Staggered Height Overhead
Cabinets
Laminate Countertops
Laminate Backsplash
Concealed Cabinet Hinges
Drawer over Door
Dovetail Drawers

CUSTOMER CONTACT

Notes:

PRINTABLE INFO SHEET

Series: Eastland Concepts Ranch

Model: A32106-P



Standards & Features (continued)

CABINETRY (continued)

Soft Close Drawers & Doors
Base and Center Shelves in Base Cabinets
Base Shelf in Vanities
36" High Bath Vanities

UTILITIES

Plumbed and Wired for Washer
Vented and Wired for Dryer
200 AMP Electrical Service
30 Gallon Electric Water Heater with Pan
High Efficiency Gas Furnace
White 6-Panel Door w/Grill
Air Exchanger System for Furnace
Insulated Heat Ducts
In-Floor Cross-Over Heating System
Copper Wiring Throughout
Main Water Line Shut-Off Valve
Programmable Thermostat
Water Shut Offs - Where Available

FLOORING

Choice of various Styles of Textured Carpet:
-Standard 18 oz. Lucerne/Innovations
-Upgrade Styles Available
Rebond Carpet Pad with Tackstrip
Carpet Installation
DiamondFlor & Vinyl Floor Coverings

BEDROOMS

Switched Receptacle

BEDROOMS (continued)

Egress Window Each Bedroom
Wire Shelving in Wardrobes
Switched Light in All Walk-In Closets

INSULATION

R-19 Fiberglass in Walls
R-31 Avg. Blown in Ceiling

CUSTOMER CONTACT

Notes:
