

PRINTABLE INFO SHEET

Series: Eastland Farmhouse
Model: A32702-P Eastland
Farmhouse



About This Model

Style: Ranch / **Bedrooms:** 3 / **Bathrooms:** 2 / **Square Feet:** 1553

CUSTOMER CONTACT

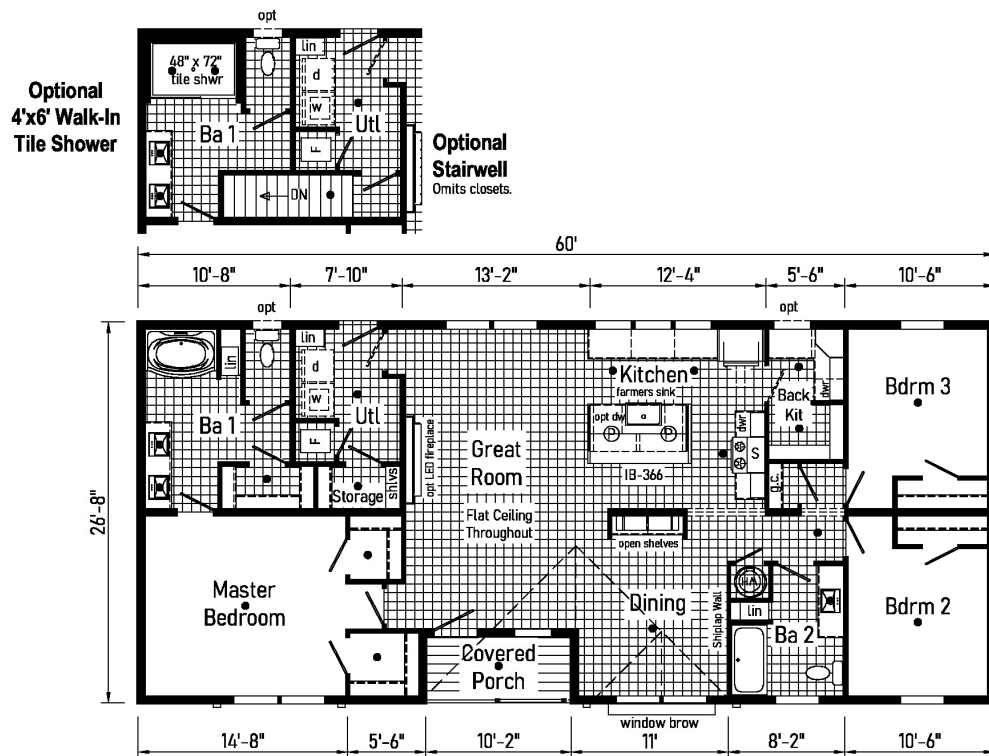
Notes:

PRINTABLE INFO SHEET

Series: Eastland Farmhouse
Model: A32702-P Eastland
Farmhouse



Floorplan



CUSTOMER CONTACT

Notes:

PRINTABLE INFO SHEET

Series: Eastland Farmhouse
Model: A32702-P Eastland
Farmhouse



Standards & Features

INTERIOR

Flat Ceiling Throughout
Stipple Ceiling
8' Sidewall Height
Full Drywall
LED Flush Mount Ceiling Lights
Pre-Hung Door Jambs
Mortise Hinges
Metal Interior Passage Sets
Floor Mount Door Stops
Wire Shelving in Guest Closet
Window Treatments
2" Mini Blinds Throughout
Black 2-Panel Passage Doors
Open Shelving
Ship Lap Accent Walls
White Ceiling Fan

EXTERIOR

Gatsby Light - Front & Rear Door
One GFI-Protected Exterior Receptacle
Vinyl Dutch Lap Siding
Sheathing Board Under Siding
5/12 24"O.C. Shingle Roof with
10" Eaves
Twin Peak Dormer w/Black
Gable Pediment
Window Awning w/ Metal Roof
2 Exterior Gas Lights at Awning
Carbon Vertical Siding Accent w/2
White Columns
12" Gable End Overhang

EXTERIOR (continued)

Ridgevent Roof Ventilation System
38x82 Black Fiberglass 4-Lite Front
Door
34x82 Black Fiberglass 1/2 Glass Rear
Door
Schlage Exterior Locksets Keyed Alike
Black Mulled Vinyl Insulated Windows
w/Grid Pattern 2/2
White Lap Siding
Black Fascia & Soffit
Window Lineals on Front Door Side

CONSTRUCTION

2x6 Exterior Walls on 16" Centers**
3/4" T&G OSB Floor Decking
30# Roof Load
Recessed Frame Design

KITCHEN

30" Deluxe Black Gas Range
Power Range Hood with Light
18 Cubic Foot Black, No-Frost Refrigerator
Farmers Galley Sink Stainless Steel w/ Black
Coilspring Faucet
1 USB Receptacle
2 Pendant Lights at Island
Full Ceramic Backsplash (Envy Green)

BATHS

60" Fiberglass Tub/Showers
Garden Tub/Shower at Bath 1
1.6 Gallon Per Flush Elongated Toilets
China Stool, Tank and Lid

CUSTOMER CONTACT

Notes:

PRINTABLE INFO SHEET

Series: Eastland Farmhouse
Model: A32702-P Eastland
Farmhouse



Standards & Features (continued)

BATHS (continued)

Lighted Vent Fan in Each Bath
Black Structured Flow Faucets
Anti-Scald Faucets in Tub/Shower
Shower Drain with Removable Strainer
Square China Lav
Furniture Style Lav

CABINETRY

Evermore Custom Cabinetry
(KCMA Certified)
White & Onyx Black MDF Mission Style Cabinet
Doors
Black Cabinet Hardware
Contemporary Crown Moulding on Kitchen Cabinets
Lined Overhead Cabinets
30" Staggered Height Overhead
Cabinets
Laminate Countertops
Laminate Backsplashes
Concealed Cabinet Hinges
Soft Close Drawer Guides
Dovetail Drawers
Base and Center Shelves in Base
Cabinets
Base Shelf in Vanities
36" High Bath Vanities

UTILITIES

Plumbed and Wired for Washer
Vented and Wired for Dryer
100 AMP Electrical Service w/
Extended Panel

UTILITIES (continued)

30 Gallon Electric Water Heater
with Pan
Gas Furnace
White 2-Panel Door w/Grill
Air Exchanger System for Furnace
Aluminum Heat Ducts
Perimeter Heat
In-Floor Cross-Over Heating System
Copper Wiring Throughout
Main Water Line Shut-Off Valve
Programmable Thermostat
Smoke Detectors With Battery
Back-Up

FLOORING

Choice of Various Styles of Carpet:
-Standard Shaw Take Away
-Upgrade Styles Available
Rebond Carpet Pad with Tackstrip
Carpet Installation
Shaw Fortress & Vinyl Floor Coverings

BEDROOMS

Switched Light Each Bedroom
Vinyl Wall Coverings in all Bedrooms
Egress Window Each Bedroom
Wire Shelving in Wardrobes
Switched Light in All Walk-In Closets

INSULATION

R-14 Fiberglass in Floor
R-19 Fiberglass in Walls
R-25 Avg. Blown in Ceiling -Single

CUSTOMER CONTACT

Notes:

PRINTABLE INFO SHEET

Series: Eastland Farmhouse
Model: A32702-P Eastland
Farmhouse



Standards & Features (continued)

INSULATION (continued)

R-28 Avg. Blown in Ceiling & Ranch

CUSTOMER CONTACT

Notes:
