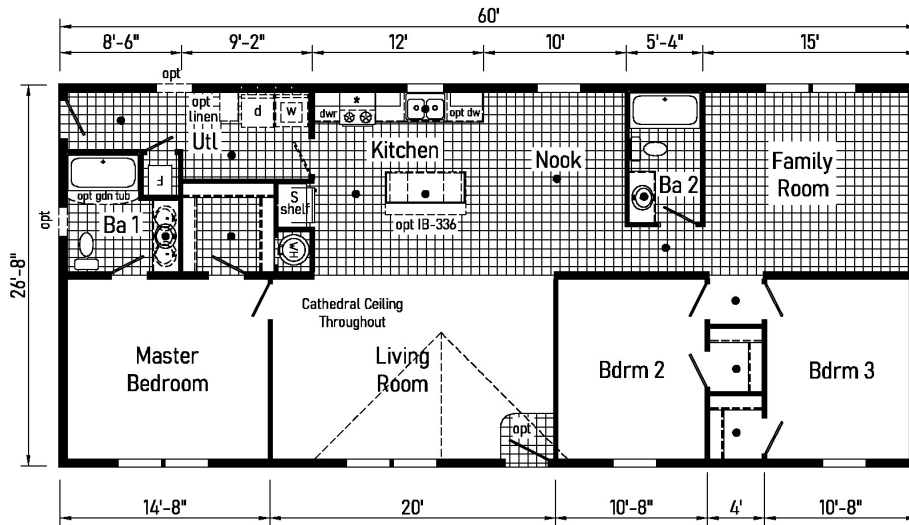


PRINTABLE INFO SHEET

Series: Beacon Limited

Model: DT1015-P



DT1015-P 2860 Approx. 1600 Sq. Ft.

• = Std. can light

* = Additional std 4" staggered overhead cabinets with opt. flat ceiling

Builder: Colony Factory Crafted Homes	Address: 20510 Paint Blvd. Shippenville, PA 16254	Callout: 2860	Revisions: 5/24/23 1	Scale: 1/8" = 1'-0"	Date: 05/15/2023	Cust: -	Model/Eng. No.: DT1015-P
Title: Literature			Drawn By: OY	Reference: NONE		Dir: -	LIT
						SN: .	Fig.:

About This Model

Style: Ranch / Bedrooms: 3 / Bathrooms: 2 / Square Feet: 1600

CUSTOMER CONTACT

Notes:

PRINTABLE INFO SHEET



Series: Beacon Limited
Model: DT1015-P

Standards & Features

INTERIOR

Flat Ceiling Throughout - Single
Cathedral Ceiling Throughout -Ranch
Stipple Ceiling
8' Sidewall Height - Single
7'6" Sidewall Height - Ranch
Vinyl Wall Coverings on Gypsum
LED Flush Mount Ceiling Lights
Pre-Hung Door Jambs
Mortise Hinges
Metal Interior Passage Sets
Floor Mount Door Stops
Smoke Detectors With Battery Back-Up
Wire Shelving in Guest Closet
2" Mini Blinds Throughout
White 6-Panel Passage Doors

EXTERIOR

Patina Square Light at Front Door
Seeded Glass Light at Rear Door
One GFI-Protected Exterior Receptacle
Vinyl Dutch Lap Siding
Sheathing Board Under Siding
Shingle Roof with
4" Eaves – Single Section (14/16)
10" Eaves – Ranch Homes (28/32)
12" Gable End Overhang
Ridgevent Roof Ventilation System
38x82 Steel 6-Panel Front Door
34x82 6-Panel Rear Door
Schlage Exterior Locksets Keyed Alike

EXTERIOR (continued)

Vinyl Insulated Windows with Grids
12" Raised Panel Shutters on Front Door Side

CONSTRUCTION

2x6 Transverse Floor – 12/14 wide
2x8 Transverse Floor – 16 wide
2x6 Exterior Walls on 16" Centers**
¾" T&G OSB Floor Decking
20# Roof Load
Recessed Frame Design

KITCHEN

30" Deluxe Black Gas Range
Power Range Hood with Light
18 Cubic Foot Black, No-Frost Refrigerator
Stainless Steel Sink - 33x19x7
Empire Hi-Rise Faucet
1 USB Receptacle

BATHS

60" Tub/Showers
1.6 Gallon Per Flush Elongated Toilets
China Stool, Tank and Lid
Lighted Vent Fan in Each Bath
Empire Faucets
Anti-Scald Faucets in Tub/Shower
Shower Drain w/ Removable Strainer

CABINETRY

KCMA Evermore Custom Cabinetry
MDF Mission Style Cabinet Doors
Brushed Nickel Cabinet Hardware
Lined Overhead Cabinets

CUSTOMER CONTACT

Notes:

PRINTABLE INFO SHEET



Series: Beacon Limited
Model: DT1015-P

Standards & Features (continued)

CABINETRY (continued)

- 30" Staggered Overhead Cabinets
- Dovetail Drawers
- Laminate Countertops
- Laminate Backsplashes
- Concealed Cabinet Hinges
- Soft Close Drawer Guides
- Base Shelves in Base Cabinets
- Base Shelf in Vanities
- 36" High Bath Vanities

UTILITIES

- Plumbed and Wired for Washer
- Vented and Wired for Dryer
- 200 AMP Electrical Service
- 30 Gallon Electric Water Heater with Pan
- Electric Furnace
- White 6-Panel Door w/Grill
- Air Exchanger System for Furnace
- Aluminum Heat Ducts
- In-Floor Cross-Over Heating System
- Copper Wiring Throughout
- Main Water Line Shut-Off Valve
- Programmable Thermostat

FLOORING

- Choice of Various Styles of Textured Carpet:
- Standard 18 oz. Lucerne/Innovations
- Upgrade Styles Available
- Rebond Carpet Pad with Tackstrip
- Carpet Installation

FLOORING (continued)

DiamondFlor & Vinyl Floor Coverings

BEDROOMS

- Switched Receptacles
- Vinyl Wall Coverings in all Bedrooms
- Egress Window Each Bedroom
- Wire Shelving in Wardrobes
- Switched Light in All Walk-In Closets

INSULATION

- R-14 Fiberglass in Floor
- R-19 Fiberglass in Walls
- R-25 Avg. Blown in Ceiling -Single
- R-28 Avg. Blown in Ceiling & Ranch

CUSTOMER CONTACT

Notes:
