

## PRINTABLE INFO SHEET

Series: Beacon Limited

Model: DT1013-P



## About This Model

Style: Ranch / Bedrooms: 3 / Bathrooms: 2 / Square Feet: 1387

## CUSTOMER CONTACT

Notes:

---

---

---

---

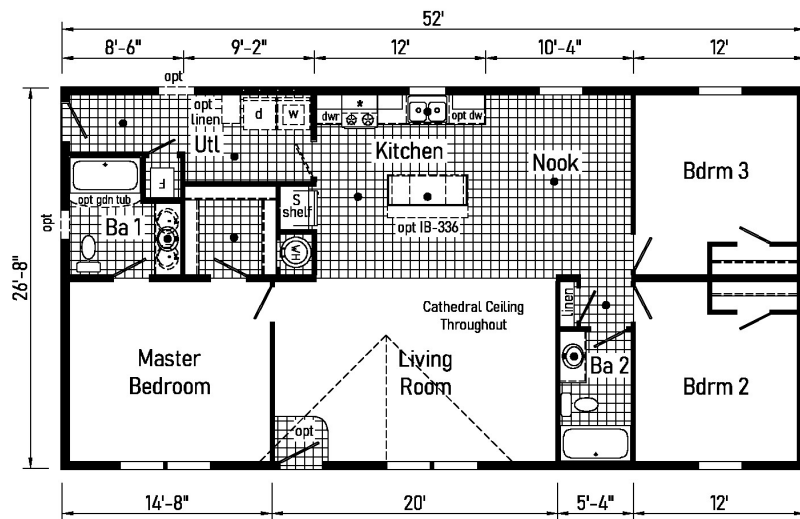
## PRINTABLE INFO SHEET

Series: Beacon Limited

Model: DT1013-P



## Floorplan



DT1013-P 2852 Approx. 1387 Sq. Ft.

● = Std. can light

\* = Additional std 4" staggered overhead cabinets with opt. flat ceiling

Builder: Colony Factory Crafted Homes	Address: 20510 Paint Blvd. Shippensburg, PA 16254	Callout: 2852	Revisions: 5/15/23	Scale: 1/8" = 1'-0"	Date: 05/15/2023	Cust: -	Model/Eng. No.: DT1013-P
Title: Literature		Drawn By: OY	Reference: NONE	S/N: -	Dir: -	Pg: -	LIT

N:\COLONY\10132-07103-P

## CUSTOMER CONTACT

Notes:

---



---



---



---

## PRINTABLE INFO SHEET

**Series: Beacon Limited**

**Model: DT1013-P**



## Standards & Features

### INTERIOR

Flat Ceiling Throughout - Single  
Cathedral Ceiling Throughout -Ranch  
Stipple Ceiling  
8' Sidewall Height - Single  
7'6" Sidewall Height - Ranch  
Vinyl Wall Coverings on Gypsum  
LED Flush Mount Ceiling Lights  
Pre-Hung Door Jambs  
Mortise Hinges  
Metal Interior Passage Sets  
Floor Mount Door Stops  
Smoke Detectors With Battery  
Back-Up  
Wire Shelving in Guest Closet  
2" Mini Blinds Throughout  
White 6-Panel Passage Doors

### EXTERIOR

Patina Square Light at Front Door  
Seeded Glass Light at Rear Door  
One GFI-Protected Exterior Receptacle  
Vinyl Dutch Lap Siding  
Sheathing Board Under Siding  
Shingle Roof with  
4" Eaves &ndash; Single Section (14/16)  
10" Eaves &ndash; Ranch Homes (28/32)  
12" Gable End Overhang  
Ridgevent Roof Ventilation System  
38x82 Steel 6-Panel Front Door  
34x82 6-Panel Rear Door  
Schlage Exterior Locksets Keyed Alike

### EXTERIOR (continued)

Vinyl Insulated Windows with Grids  
12" Raised Panel Shutters on Front  
Door Side

### CONSTRUCTION

2x6 Transverse Floor &ndash; 12/14 wide  
2x8 Transverse Floor &ndash; 16 wide  
2x6 Exterior Walls on 16" Centers\*\*  
&frac34;" T&amp;G OSB Floor Decking  
20# Roof Load  
Recessed Frame Design

### KITCHEN

30" Deluxe Black Gas Range  
Power Range Hood with Light  
18 Cubic Foot Black, No-Frost Refrigerator  
Stainless Steel Sink - 33x19x7  
Empire Hi-Rise Faucet  
1 USB Receptacle

### BATHS

60" Tub/Showers  
1.6 Gallon Per Flush Elongated Toilets  
China Stool, Tank and Lid  
Lighted Vent Fan in Each Bath  
Empire Faucets  
Anti-Scald Faucets in Tub/Shower  
Shower Drain w/ Removable Strainer

### CABINETRY

KCMA Evermore Custom Cabinetry  
MDF Mission Style Cabinet Doors  
Brushed Nickel Cabinet Hardware  
Lined Overhead Cabinets

## CUSTOMER CONTACT

Notes:

---

---

---

---

## PRINTABLE INFO SHEET

**Series: Beacon Limited**

**Model: DT1013-P**



## Standards & Features (continued)

### CABINETRY (continued)

30" Staggered Overhead Cabinets  
Dovetail Drawers  
Laminate Countertops  
Laminate Backsplashes  
Concealed Cabinet Hinges  
Soft Close Drawer Guides  
Base Shelves in Base Cabinets  
Base Shelf in Vanities  
36" High Bath Vanities

### UTILITIES

Plumbed and Wired for Washer  
Vented and Wired for Dryer  
200 AMP Electrical Service  
30 Gallon Electric Water Heater  
with Pan  
Electric Furnace  
White 6-Panel Door w/Grill  
Air Exchanger System for Furnace  
Aluminum Heat Ducts  
In-Floor Cross-Over Heating System  
Copper Wiring Throughout  
Main Water Line Shut-Off Valve  
Programmable Thermostat

### FLOORING

Choice of Various Styles of Textured  
Carpet:  
-Standard 18 oz. Lucerne/Innovations  
-Upgrade Styles Available  
Rebond Carpet Pad with Tackstrip  
Carpet Installation

### FLOORING (continued)

DiamondFlor & Vinyl Floor Coverings

### BEDROOMS

Switched Receptacles  
Vinyl Wall Coverings in all Bedrooms  
Egress Window Each Bedroom  
Wire Shelving in Wardrobes  
Switched Light in All Walk-In Closets

### INSULATION

R-14 Fiberglass in Floor  
R-19 Fiberglass in Walls  
R-25 Avg. Blown in Ceiling -Single  
R-28 Avg. Blown in Ceiling & Ranch

## CUSTOMER CONTACT

Notes:

---

---

---

---