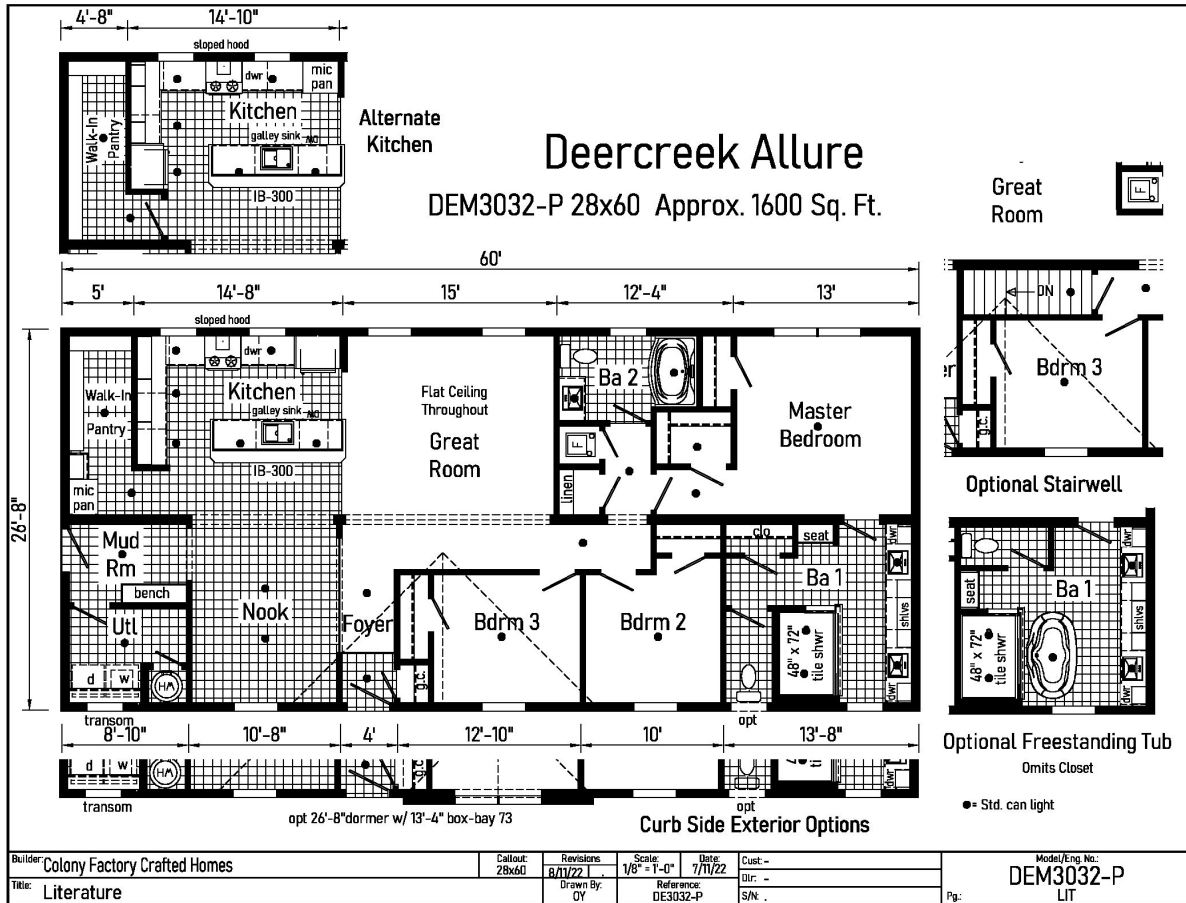


# PRINTABLE INFO SHEET

Series: Deercreek Allure Modular  
 Model: DEM3032-P



## About This Model

Style: Ranch / Bedrooms: 3 / Bathrooms: 2 / Square Feet: 1600

## CUSTOMER CONTACT

Notes: \_\_\_\_\_

\_\_\_\_\_

\_\_\_\_\_

\_\_\_\_\_

# PRINTABLE INFO SHEET

**Series: Deercreek Allure Modular**  
**Model: DEM3032-P**



## Standards & Features

### INTERIOR

- Flat Ceiling Throughout
- Smooth Ceiling w/ Cove Moulding
- 8' Sidewall Height
- Primed Smooth Drywall Throughout
- LED Flush Mount Ceiling Lights
- Pre-Hung Door Jambs
- Mortise Hinges
- Kob Interior Passage Sets
- Floor Mount Door Stops
- Smoke Detectors With Battery Back-Up
- Wire Shelving in Guest Closet
- 2" Mini Blinds
- Designer Window Treatments
- White 6-Panel Passage Doors
- Contemporary Moulding Package

### EXTERIOR

- Black Lantern Light - Front & Rear Door
- GFI-Protected Exterior Receptacles ( Front & Back)
- Vinyl Dutch Lap Siding
- OSB Sheathing Under Siding
- 2/12 Roof Pitch with 10" Eaves
- 12" Gable End Overhang
- Ridgevent Roof Ventilation System
- 38x82 Steel 6-Panel Front Door
- 38x82 Steel 6-Panel Rear Door
- Schlage Exterior Locksets Keyed Alike
- Vinyl Insulated Windows w/Grids
- Window Lineals on Front Door Side

### CONSTRUCTION

- 2x6 Transverse Floor, 16" centers\*\*
- 2x6 Exterior Walls on 16" Centers\*\*
- 3/4" T&G OSB Floor Decking
- 30# Roof Load
- Recessed Frame Design

### KITCHEN

- Stainless Steel SxS Refrigerator
- Stainless Steel Self Cleaning Range
- Stainless Steel Dishwasher
- Galley Sink w/ Coil Spring Faucet
- Full Ceramic Backsplash
- Refrigerator Surround
- 1 USB Receptacle

### BATHS

- Curved Front Garden Tub/Shower
- Bath 2
- 4x6 Ceramic Walk-in Shower - Bath 1
- 1.6 Gallon Per Flush Elongated Toilets
- China Stool, Tank and Lid
- Square China Lav Sinks
- Lighted Vent Fan in Each Bath
- Structured Flow Brushed Nickel Faucets
- Anti-Scald Faucets in Tub/Shower
- Shower Drain with Removable Strainer

### CABINETRY

- Evermore Custom Cabinetry (KCMA Certified)
- Premium Cabinetry
- Mission Style Cabinet Doors
- Cabinet Pulls

## CUSTOMER CONTACT

Notes:

---

---

---

---

# PRINTABLE INFO SHEET

Series: Deercreek Allure Modular

Model: DEM3032-P



## Standards & Features (continued)

### CABINETRY (continued)

- Hardwood Moulding on Cabinets
- Lined Overhead Cabinets
- 42" Height Overhead Cabinets
- Drawer over Door Base Cabinets
- Concealed Cabinet Hinges
- Soft Close Drawers
- Dovetail Drawers
- Base and Center Shelves in Base Cabinets
- Base Shelf in Vanities
- 36" High Bath Vanities

### UTILITIES

- Plumbed and Wired for Washer
- Vented and Wired for Dryer
- Wire Shelf over W/D Hookups
- 100 AMP Electrical Service w/Extended Panel
- 40 Gallon Electric Water Heater with Pan
- Hi-Efficiency Gas Furnace
- White 6-Panel Furnace Door w/Grill
- Perimeter Heating System
- Air Exchanger System for Furnace
- Aluminum Heat Ducts
- In-Floor Cross-Over Heating System
- Copper Wiring Throughout
- Main Water Line Shut-Off Valve
- Programmable Thermostat
- Water Shut-Off Valves
- Exterior Water Faucet (Front & Back)

### FLOORING

- Choice of Various Styles of Textured Carpet:
- Standard 18 oz. Lucerne/Innovations
- Upgrade Styles Available
- Rebond Carpet Pad with Tackstrip
- Carpet Installation
- DiamondFlor Vinyl Flooring per print

### BEDROOMS

- LED Flush Mount Lights
- Egress Window Each Bedroom
- Wire Shelving in Wardrobes
- Switched LED Light in All Walk-In Closets

### INSULATION

- R-22 Fiberglass in Floor
- R-19 Fiberglass in Walls
- R-31 Avg. Blown in Ceiling

### MODULAR

- Wind Wrap
- 40# Roof Load
- Ice Guard
- 90 MPH Wind Zone C
- 2x10 Floor Joist 16" O.C.
- 2x4 Interior Walls
- Additional Exterior Receptacle
- (1) Exterior Faucet
- Low & E Gridded Windows w/ Argon
- No Floor Insulation
- 200 AMP Panel Box
- Soft Close Cabinet Doors

## CUSTOMER CONTACT

Notes:

---

---

---

---

## PRINTABLE INFO SHEET

**Series: Deercreek Allure Modular**

**Model: DEM3032-P**



## Standards & Features (continued)

### **MODULAR (continued)**

No Blinds or Curtains

Phone Jack

Mulled Windows

2x3 Marriage Wall

2x Top & Bottom

5/12 Roof with Architectural Shingles (40 #)

## CUSTOMER CONTACT

Notes:

---

---

---

---