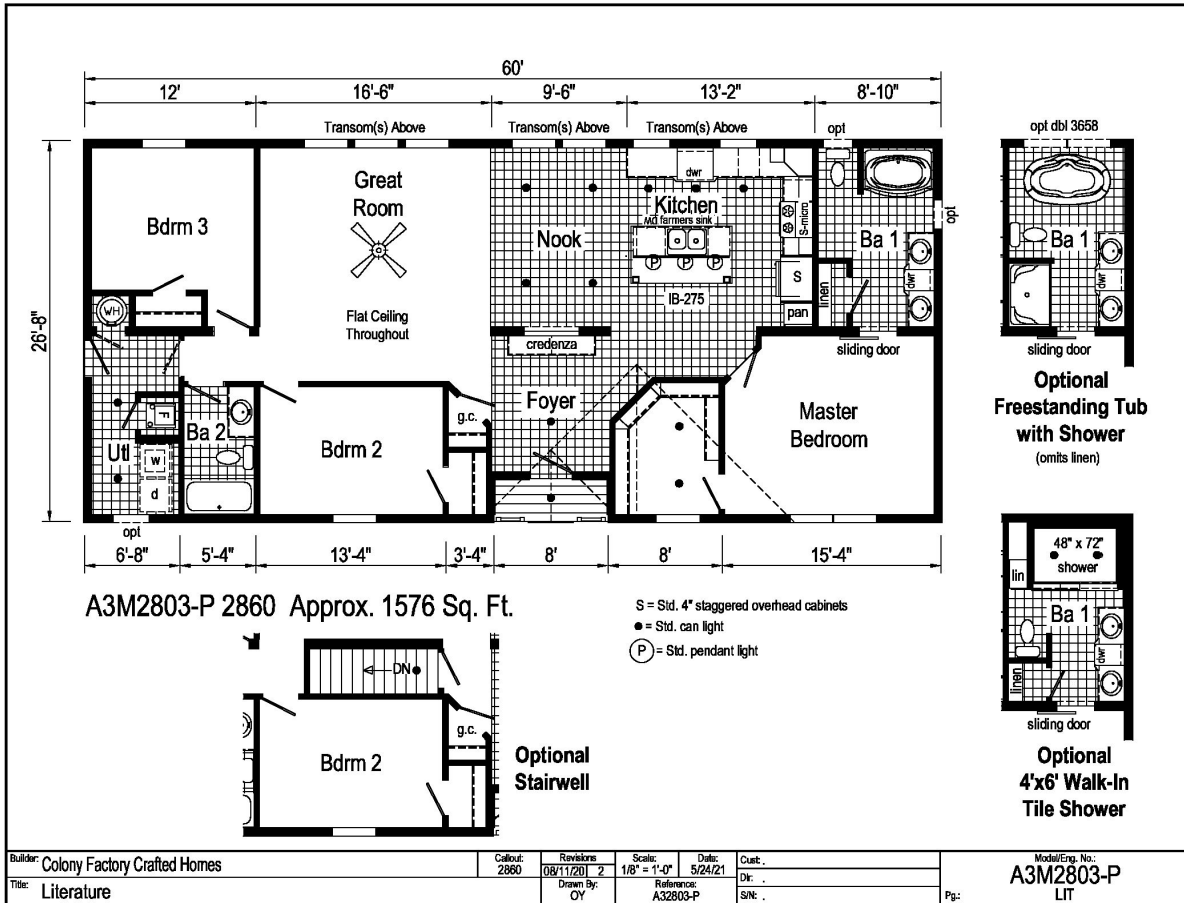


PRINTABLE INFO SHEET

Series: Eastland Prime
 Model: A3M2803-P



About This Model

Style: Ranch / Bedrooms: 3 / Bathrooms: 2 / Square Feet: 1576

CUSTOMER CONTACT

Notes:

PRINTABLE INFO SHEET



Series: Eastland Prime
Model: A3M2803-P

Standards & Features

INTERIOR

- Stipple Ceiling
- Cathedral Ceiling -Ranch
- Flat Ceiling - Single Section
- 90" Sidewall Height -Ranch**
- 8' Sidewall Height - Single Section
- Vinyl Wall Coverings on Gypsum Walls
- LED Flush Mount Ceiling Lights
- Pre-Hung Door Jambs
- Mortise Hinges
- Metal Interior Passage Sets
- Floor Mount Door Stops
- Smoke Detectors With Battery Back-Up
- Wire Shelving in Guest Closet
- Window Treatments
- 2" Mini Blinds Throughout
- White 6-Panel Passage Doors

Sliding Interior Door (per plan)

- 3 Industrial Pendant Lights over Island
- Skyview Wall with Transoms (Ranch)
- Ceiling Fan in Living Room
- Foyer Accent Bench (per plan)and Wall

EXTERIOR

- Black Lantern Light at Front & Rear Door
- One GFI-Protected Exterior Receptacle
- Vinyl Dutch Lap Siding
- Sheathing Board Under Siding
- Shingle Roof with
- 4" Eaves & Single Section (14/16)
- 10" Eaves & Ranch Homes (28/32)
- 12" Gable End Overhang

EXTERIOR (continued)

- Ridgevent Roof Ventilation System
- 38x82 Steel 6-Panel Front Door
- 34x82 Steel 6-Panel Rear Door
- Schlage Exterior Locksets Keyed Alike
- Mulled Vinyl Insulated Windows w/Grids
- 12" Louvered Shutters on Front Side

CONSTRUCTION

- 2x6 Transverse Floor & 12/14 wide
- 2x8 Transverse Floor & 16 wide
- 2x6 Exterior Walls on 16" Centers**
- 3/4" T&G OSB Floor Decking
- 20# Roof Load
- Recessed Frame Design

KITCHEN

Black Gold Appliance Package (Gas)

- Black Over the Range Microwave
- Curved Front Stainless Steel Sink
- Full Ceramic Backsplash at Range Wall
- 4" Laminate Backsplash Window Wall
- Structured Flow Pull Down Faucet
- Cabinetry Accent
- 1 USB Receptacle

BATHS

- Fiberglass Tub/Showers in Bath 2

Fiberglass Garden Tub/Shower in Master Bathroom

- Framed Mirrors

2 Light Bath Fixture over Mirrors

- 1.6 Gallon Per Flush Elongated Toilets

Square China Lav Sinks

- Double Lav Sinks in Master Bath

CUSTOMER CONTACT

Notes:

PRINTABLE INFO SHEET



Series: Eastland Prime

Model: A3M2803-P

Standards & Features (continued)

Square China Lav Sinks (continued)

Laminate Backsplash in Baths

Cabinetry Accent

China Stool, Tank and Lid

Lighted Vent Fan in Each Bath

Empire Faucets

Anti-Scald Faucets in Tub/Shower

Shower Drain with Removable Strainer

CABINETRY

Evermore Custom Cabinetry

(KCMA Certified)

MDF Mission Style Cabinet Doors

Brushed Nickel Cabinet Hardware

Crown Moulding on Kitchen Cabinets

Lined Overhead Cabinets

Laminate Countertops

Transitional Cabinet Pulls

Concealed Cabinet Hinges

Soft Close Drawer Guides

Base and Center Shelves in Base

Cabinets

Base Shelf in Vanities

36" High Bath Vanities

UTILITIES

Plumbed and Wired for Washer

Vented and Wired for Dryer

100 AMP Electrical Service

30 Gallon Electric Water Heater

with Pan

Gas Furnace

White 6-Panel Door w/Grill

UTILITIES (continued)

Air Exchanger System for Furnace

Aluminum Heat Ducts

In-Floor Cross-Over Heating System

Copper Wiring Throughout

Main Water Line Shut-Off Valve

Programmable Thermostat

FLOORING

Choice of Various Styles of Textured

Carpet:

-Standard 18 oz. Lucerne/Innovations

-Upgrade Styles Available

Rebond Carpet Pad with Tackstrip

Carpet Installation

DiamondFlor & Vinyl Floor Coverings

Entry Foyer Vinyl

BEDROOMS

Switched Receptacle

Vinyl Wall Coverings in all Bedrooms

Egress Window Each Bedroom

Wire Shelving in Wardrobes

Switched Light in All Walk-In Closets

INSULATION

R-14 Fiberglass in Floor

R-19 Fiberglass in Walls

R-25 Avg. Blown in Ceiling -Single

R-28 Avg. Blown in Ceiling & Ranch

Modular Features

Note: Floorplan may be altered based on building code

Drywall

OSB Wrap

CUSTOMER CONTACT

Notes:

PRINTABLE INFO SHEET

Series: Eastland Prime

Model: A3M2803-P



Standards & Features (continued)

Modular Features (continued)

Wind Wrap

40# Roof Load

Ice Guard

5/12 Roof Pitch

90 MPH Wind Zone C

2x10 Floor Joist 16" O.C.

2x4 Interior Walls

Architectural Shingles

Additional Exterior Receptacle

(1) Exterior Faucet

Low & E Gridded Windows w/ Argon

R-31 Ceiling Insulation

No Floor Insulation

Perimeter Heat

Water Shut Offs & Where Available

200 AMP Panel Box

Hi-Efficiency Furnace

Premium Cabinetry

Premium Moulding Package

No Blinds or Curtains

Structured Flow Faucets

Drawer over Door Cabinet Construction

Soft Close Cabinet Doors

Phone Jack

**Note Skyview Wall with Transoms Not Available

CUSTOMER CONTACT

Notes:
