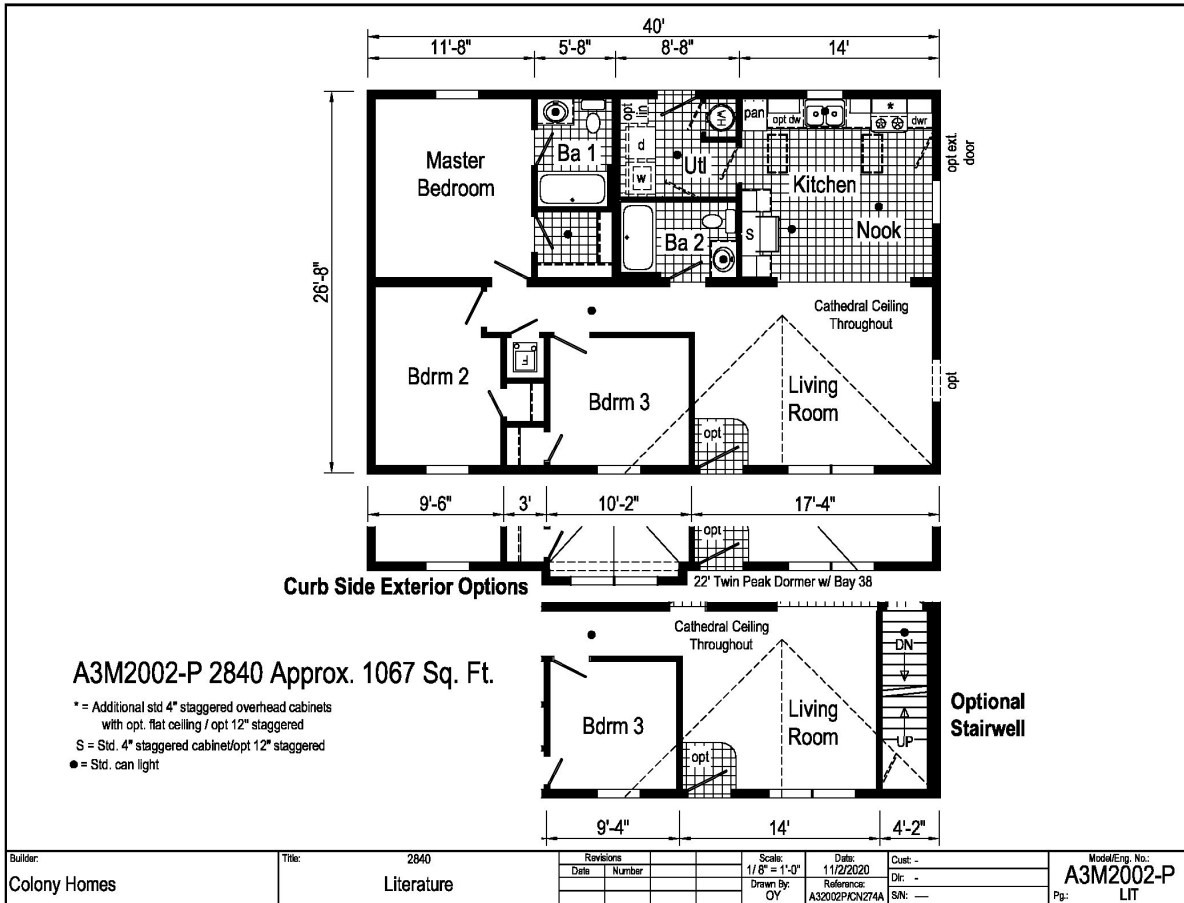


# PRINTABLE INFO SHEET

Series: Eastland Concepts Ranch

Model: A3M2002-P



## About This Model

Style: Ranch / Bedrooms: 3 / Bathrooms: 2 / Square Feet: 1067

## CUSTOMER CONTACT

Notes:

---



---



---



---

# PRINTABLE INFO SHEET

Series: Eastland Concepts Ranch

Model: A3M2002-P



## Standards & Features

### INTERIOR

- Flat Ceiling Throughout - Single
- Cathedral Ceiling Throughout - Ranch
- Stipple Ceiling
- 8' Sidewall Height - Single
- 7'6" Sidewall Height - Ranch
- Vinyl Wall Coverings on Gypsum Walls
- LED Flush Mount Ceiling Lights
- Pre-Hung Door Jambs
- Mortise Hinges
- Metal Interior Passage Sets
- Floor Mount Door Stops
- Smoke Detectors With Battery Back-Up
- Wire Shelving in Guest Closet
- Window Treatments
- 2" Mini Blinds Throughout
- White 6-Panel Passage Doors

### EXTERIOR

- Black Lantern Light - Front & Rear Door
- One GFI-Protected Exterior Receptacle
- Vinyl Dutch Lap Siding
- Sheathing Board Under Siding
- Shingle Roof with
- 4" Eaves &dash; Single Section (14/16)
- 10" Eaves &dash; Ranch Homes (28/32)
- 12" Gable End Overhang
- Ridgevent Roof Ventilation System
- 38x82 Steel 6-Panel Front Door
- 34x82 Steel 6-Panel Rear Door

### EXTERIOR (continued)

- Schlage Exterior Locksets Keyed Alike
- Mulled Vinyl Insulated Windows w/Grids
- 12" Raised Panel Shutters on Front Door Side

### CONSTRUCTION

- 2x6 Transverse Floor &dash; 12/14 wide
- 2x8 Transverse Floor &dash; 16 wide
- 2x6 Exterior Walls on 16" Centers\*\*
- 3/4" T&G OSB Floor Decking
- 20# Roof Load
- Recessed Frame Design

### KITCHEN

- 30" Deluxe Black Gas Range
- Power Range Hood with Light
- 18 Cubic Foot Black, No-Frost Refrigerator
- Stainless Steel Sink - 33x19x7
- Empire Hi-Rise Faucet
- 1 USB Receptacle

### BATHS

- 60" Tub/Showers
- 1.6 Gallon Per Flush Elongated Toilets
- China Stool, Tank and Lid
- Lighted Vent Fan in Each Bath
- Empire Faucets
- Anti-Scald Faucets in Tub/Shower
- Shower Drain with Removable Strainer

### CABINETRY

- Evermore Custom Cabinetry (KCMA Certified)
- MDF Mission Style Cabinet Doors
- Brushed Nickel Cabinet Hardware

## CUSTOMER CONTACT

Notes:

---

---

---

---

# PRINTABLE INFO SHEET

Series: Eastland Concepts Ranch

Model: A3M2002-P



## Standards & Features (continued)

### CABINETRY (continued)

- Crown Moulding on Kitchen Cabinets
- Lined Overhead Cabinets
- 30" Staggered Height Overhead Cabinets
- Laminate Countertops
- Laminate Backsplashes
- Concealed Cabinet Hinges
- Soft Close Drawer Guides
- Dovetail Drawers
- Base and Center Shelves in Base Cabinets
- Base Shelf in Vanities
- 36" High Bath Vanities

### UTILITIES

- Plumbed and Wired for Washer
- Vented and Wired for Dryer
- 100 AMP Electrical Service w/ Extended Panel
- 30 Gallon Electric Water Heater with Pan
- Gas Furnace
- White 6-Panel Door w/Grill
- Air Exchanger System for Furnace
- Aluminum Heat Ducts
- In-Floor Cross-Over Heating System
- Copper Wiring Throughout
- Main Water Line Shut-Off Valve
- Programmable Thermostat

### FLOORING

Choice of Various Styles of Textured

### FLOORING (continued)

- Carpet:
  - Standard 18 oz. Lucerne/Innovations
  - Upgrade Styles Available
- Rebond Carpet Pad with Tackstrip
- Carpet Installation
- DiamondFlor & Vinyl Floor Coverings

### BEDROOMS

- Switched Receptacles
- Vinyl Wall Coverings in all Bedrooms
- Egress Window Each Bedroom
- Wire Shelving in Wardrobes
- Switched Light in All Walk-In Closets

### INSULATION

- R-14 Fiberglass in Floor
- R-19 Fiberglass in Walls
- R-25 Avg. Blown in Ceiling -Single
- R-28 Avg. Blown in Ceiling & Ranch

### MODULAR STANDARD FEATURES:

#### INTERIOR

- Cathedral Ceiling Throughout
- Stipple Ceiling
- 7'6" Sidewall Height
- Drywall
- LED Flush Mount Ceiling Lights
- Pre-Hung Door Jambs
- Mortise Hinges
- Metal Interior Passage Sets
- Floor Mount Door Stops
- Smoke Detectors With Battery Back-Up

## CUSTOMER CONTACT

Notes:

---

---

---

---

## PRINTABLE INFO SHEET

Series: Eastland Concepts Ranch

Model: A3M2002-P



## Standards & Features (continued)

### INTERIOR (continued)

Wire Shelving in Guest Closet  
White 6 Panel Passage Doors  
Premium Moulding Package  
Phone Jack

### EXTERIOR

Black Lantern Light - Front & Rear Door  
Two GFI-Protected Receptacles  
One Exterior Faucet  
Vinyl Dutch Lap Siding  
OSB Wrap  
Wind Wrap  
5/12 Architectural Shingle Roof w/  
10" Eaves  
12" Gable End Overhang  
Ice Guard  
Ridgevent Roof Ventilation System  
38x82 Steel 6-Panel Front Door  
34x82 Steel 6-Panel Rear Door  
Schlage Exterior Locksets Keyed Alike  
Low-E Gridded Windows with Argon  
12" Raised Panel Shutters on Front  
Door Side

### CONSTRUCTION

2x10 Floor Joist 16" O.C.  
2x6 Exterior Walls on 16" Centers\*\*  
2x4 Interior Walls  
3/4" T&G OSB Floor Decking  
40# Roof Load  
90 MPH Wind Zone C

### KITCHEN

30" Deluxe Black Gas Range  
Power Range Hood with Light  
18 Cubic Foot Black, No-Frost Refrigerator  
Stainless Steel Sink - 33x19x7  
Structured Flow Hi-Rise Faucet  
1 USB Receptacle

### BATHS

One Piece Fiberglass 60" Tub/Showers  
Framed Mirrors  
1.6 Gallon Per Flush Elongated Toilets  
China Stool, Tank and Lid  
Square China Lav Sinks  
Lighted Vent Fan in Each Bath  
Structured Flow Faucets  
Anti-Scald Faucets in Tub/Shower  
Shower Drain with Removable Strainer

### CABINETRY

Evermore Custom Cabinetry  
(KCMA Certified)  
Mission Style Cabinet Doors  
Brushed Nickel Cabinet Hardware  
Crown Moulding on Kitchen Cabinets  
Lined Overhead Cabinets  
30" Staggered Height Overhead  
Cabinets  
Laminate Countertops  
Laminate Backsplash  
Concealed Cabinet Hinges  
Drawer over Door  
Dovetail Drawers

## CUSTOMER CONTACT

Notes:

---

---

---

---

# PRINTABLE INFO SHEET

Series: Eastland Concepts Ranch

Model: A3M2002-P



## Standards & Features (continued)

### CABINETRY (continued)

- Soft Close Drawers & Doors
- Base and Center Shelves in Base Cabinets
- Base Shelf in Vanities
- 36" High Bath Vanities

### UTILITIES

- Plumbed and Wired for Washer
- Vented and Wired for Dryer
- 200 AMP Electrical Service
- 30 Gallon Electric Water Heater with Pan
- High Efficiency Gas Furnace
- White 6-Panel Door w/Grill
- Air Exchanger System for Furnace
- Insulated Heat Ducts
- In-Floor Cross-Over Heating System
- Copper Wiring Throughout
- Main Water Line Shut-Off Valve
- Programmable Thermostat
- Water Shut Offs - Where Available

### FLOORING

- Choice of various Styles of Textured Carpet:
- Standard 18 oz. Lucerne/Innovations
- Upgrade Styles Available
- Rebond Carpet Pad with Tackstrip
- Carpet Installation
- DiamondFlor & Vinyl Floor Coverings

### BEDROOMS

- Switched Receptacle

### BEDROOMS (continued)

- Egress Window Each Bedroom
- Wire Shelving in Wardrobes
- Switched Light in All Walk-In Closets

### INSULATION

- R-19 Fiberglass in Walls
- R-31 Avg. Blown in Ceiling

## CUSTOMER CONTACT

Notes:

---

---

---

---