

PRINTABLE INFO SHEET

Series: Beacon Prestige

Model: DT1011-P



About This Model

Style: Ranch / Bedrooms: 4 / Bathrooms: 2 / Square Feet: 1493

CUSTOMER CONTACT

Notes:

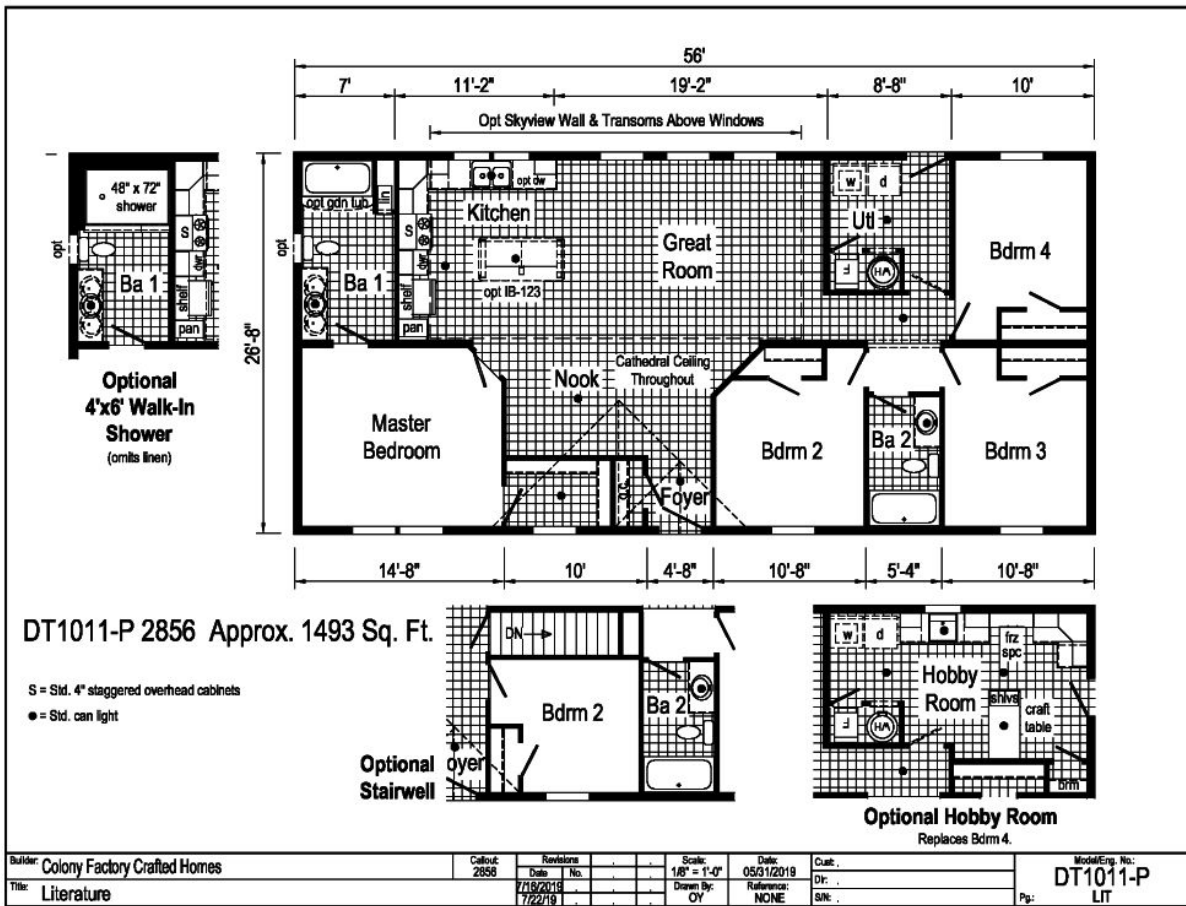
PRINTABLE INFO SHEET

Series: Beacon Prestige

Model: DT1011-P



Floorplan



CUSTOMER CONTACT

Notes:

PRINTABLE INFO SHEET

Series: Beacon Prestige

Model: DT1011-P



Standards & Features

INTERIOR

- Cathedral Ceiling Throughout
- Stipple Ceiling
- 7'6" Sidewall Height
- Vinyl Wall Coverings on Gypsum
- LED Flush Mount Ceiling Lights
- Pre-Hung Door Jambs
- Mortise Hinges
- Metal Interior Passage Sets
- Floor Mount Door Stops
- Smoke Detectors With Battery Back-Up
- Wire Shelving in Guest Closet
- 1" Mini Blinds Throughout
- White 6-Panel 30" Passage Doors

EXTERIOR

- Patina Square Light at Front Door
- Glass jar light at Rear Door
- One GFI-Protected Exterior Receptacle
- Vinyl Dutch Lap Siding
- Sheathing Board Under Siding
- Shingle Roof with
- 4" Eaves – Single Section (14/16)
- 10" Eaves – Ranch Homes (28/32)
- 12" Gable End Overhang
- Ridgevent Roof Ventilation System
- 38x76 Steel 6-Panel Front Door
- 32x76 Rear Door
- Vinyl Insulated Windows with Grids
- 12" Louvered Shutters on Front Door Side

CONSTRUCTION

- 2x6 Transverse Floor – 12/14 wide
- 2x8 Transverse Floor – 16 wide
- 2x6 Exterior Walls on 16" Centers**
- 3/4" T&G OSB Floor Decking
- 20# Roof Load
- Recessed Frame Design

KITCHEN

- 30" Deluxe Electric Range
- Power Range Hood with Light
- 18 Cubic Foot, No-Frost Refrigerator
- Stainless Steel Sink - 33x19x7
- Empire Gooseneck Faucet
- 1 USB Receptacle

BATHS

- 60" Tub/Showers
- 1.6 Gallon Per Flush Elongated Toilets
- China Stool, Tank and Lid
- Lighted Vent Fan in Each Bath
- Empire Faucets
- Anti-Scald Faucets in Tub/Shower
- Shower Drain w/ Removable Strainer

CABINETRY

- MDF Mission Style Cabinet Doors
- Brushed Nickel Cabinet Hardware
- Lined Overhead Cabinets
- 30" Overhead Cabinets
- Laminate Countertops
- Concealed Cabinet Hinges
- Deluxe Roller Guide Drawer System
- Base Shelves in Base Cabinets

CUSTOMER CONTACT

Notes:

PRINTABLE INFO SHEET

Series: Beacon Prestige

Model: DT1011-P



Standards & Features (continued)

CABINETRY (continued)

Base Shelf in Vanities

36" High Bath Vanities

UTILITIES

Plumbed and Wired for Washer

Vented and Wired for Dryer

200 AMP Electrical Service

30 Gallon Electric Water Heater
with Pan

Electric Furnace

White 6-Panel Door w/Grill

Air Exchanger System for Furnace

Aluminum Heat Ducts

In-Floor Cross-Over Heating System

Copper Wiring Throughout

Main Water Line Shut-Off Valve

Air Conditioning Thermostat With
5-Wires

FLOORING

Choice of various Styles of Textured

Carpet:

-Standard 16 oz 10 Choices Available

-Upgrade Styles 20 Choices Available

Rebond Carpet Pad with Tackstrip

Carpet Installation

DiamondFlor & Floor Coverings

BEDROOMS

Switched Receptcs

Vinyl Wall Coverings in all Bedrooms

Egress Window Each Bedroom

Wire Shelving in Wardrobes

BEDROOMS (continued)

Switched Light in All Walk-In Closets

INSULATION

R-14 Fiberglass in Floor

R-19 Fiberglass in Walls

R-25 Avg Blown in Ceiling -Single

R-28 Avg. Blown in Ceiling & Ranch

CUSTOMER CONTACT

Notes:
