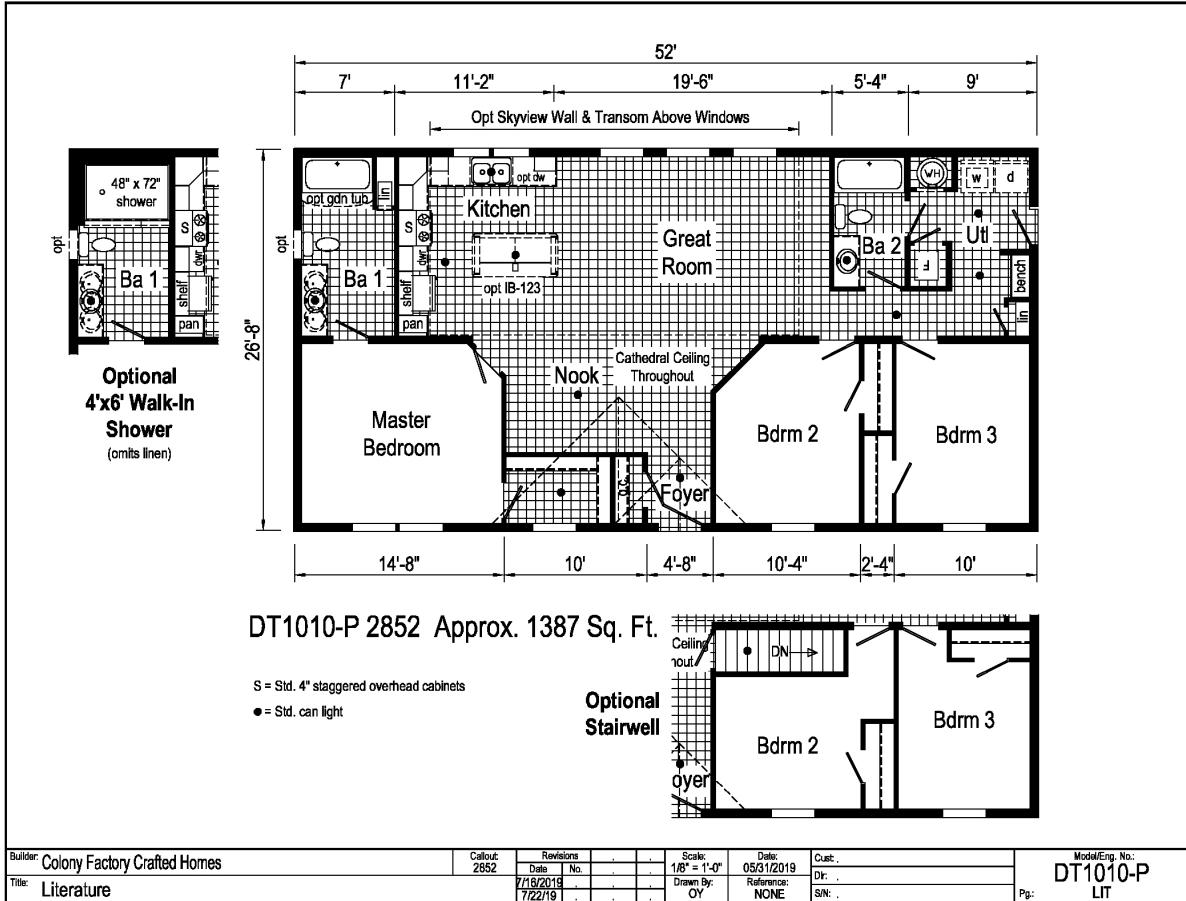


# PRINTABLE INFO SHEET

Series: Beacon Prestige

Model: DT1010-P



## About This Model

Style: Ranch / Bedrooms: 3 / Bathrooms: 2 / Square Feet: 1387

## CUSTOMER CONTACT

Notes:

---



---



---



---

# PRINTABLE INFO SHEET

**Series: Beacon Prestige**

**Model: DT1010-P**



## Standards & Features

### INTERIOR

- Cathedral Ceiling Throughout
- Stipple Ceiling
- 7'6" Sidewall Height
- Vinyl Wall Coverings on Gypsum
- LED Flush Mount Ceiling Lights
- Pre-Hung Door Jambs
- Mortise Hinges
- Metal Interior Passage Sets
- Floor Mount Door Stops
- Smoke Detectors With Battery Back-Up
- Wire Shelving in Guest Closet
- 1" Mini Blinds Throughout
- White 6-Panel 30" Passage Doors

### EXTERIOR

- Patina Square Light at Front Door
- Glass jar light at Rear Door
- One GFI-Protected Exterior Receptacle
- Vinyl Dutch Lap Siding
- Sheathing Board Under Siding
- Shingle Roof with
- 4" Eaves &ndash; Single Section (14/16)
- 10" Eaves &ndash; Ranch Homes (28/32)
- 12" Gable End Overhang
- Ridgevent Roof Ventilation System
- 38x76 Steel 6-Panel Front Door
- 32x76 Rear Door
- Vinyl Insulated Windows with Grids
- 12" Louvered Shutters on Front Door Side

### CONSTRUCTION

- 2x6 Transverse Floor &ndash; 12/14 wide
- 2x8 Transverse Floor &ndash; 16 wide
- 2x6 Exterior Walls on 16" Centers\*\*
- 3/4" T&G OSB Floor Decking
- 20# Roof Load
- Recessed Frame Design

### KITCHEN

- 30" Deluxe Electric Range
- Power Range Hood with Light
- 18 Cubic Foot, No-Frost Refrigerator
- Stainless Steel Sink - 33x19x7
- Empire Gooseneck Faucet
- 1 USB Receptacle

### BATHS

- 60" Tub/Showers
- 1.6 Gallon Per Flush Elongated Toilets
- China Stool, Tank and Lid
- Lighted Vent Fan in Each Bath
- Empire Faucets
- Anti-Scald Faucets in Tub/Shower
- Shower Drain w/ Removable Strainer

### CABINETRY

- MDF Mission Style Cabinet Doors
- Brushed Nickel Cabinet Hardware
- Lined Overhead Cabinets
- 30" Overhead Cabinets
- Laminate Countertops
- Concealed Cabinet Hinges
- Deluxe Roller Guide Drawer System
- Base Shelves in Base Cabinets

## CUSTOMER CONTACT

Notes:

---

---

---

---

## PRINTABLE INFO SHEET

**Series: Beacon Prestige**

**Model: DT1010-P**



## Standards & Features (continued)

### CABINETRY (continued)

Base Shelf in Vanities

36" High Bath Vanities

### UTILITIES

Plumbed and Wired for Washer

Vented and Wired for Dryer

200 AMP Electrical Service

30 Gallon Electric Water Heater  
with Pan

Electric Furnace

White 6-Panel Door w/Grill

Air Exchanger System for Furnace

Aluminum Heat Ducts

In-Floor Cross-Over Heating System

Copper Wiring Throughout

Main Water Line Shut-Off Valve

Air Conditioning Thermostat With  
5-Wires

### FLOORING

Choice of various Styles of Textured

Carpet:

-Standard 16 oz 10 Choices Available

-Upgrade Styles 20 Choices Available

Rebond Carpet Pad with Tackstrip

Carpet Installation

DiamondFlor & Floor Coverings

### BEDROOMS

Switched Receptcs

Vinyl Wall Coverings in all Bedrooms

Egress Window Each Bedroom

Wire Shelving in Wardrobes

### BEDROOMS (continued)

Switched Light in All Walk-In Closets

### INSULATION

R-14 Fiberglass in Floor

R-19 Fiberglass in Walls

R-25 Avg Blown in Ceiling -Single

R-28 Avg. Blown in Ceiling & Ranch

## CUSTOMER CONTACT

Notes:

---

---

---

---