

PRINTABLE INFO SHEET

Series: Deercreek MAX Ranch

Model: DE3008-P



About This Model

Style: Ranch / Bedrooms: 3 / Bathrooms: 2 / Square Feet: 1859

CUSTOMER CONTACT

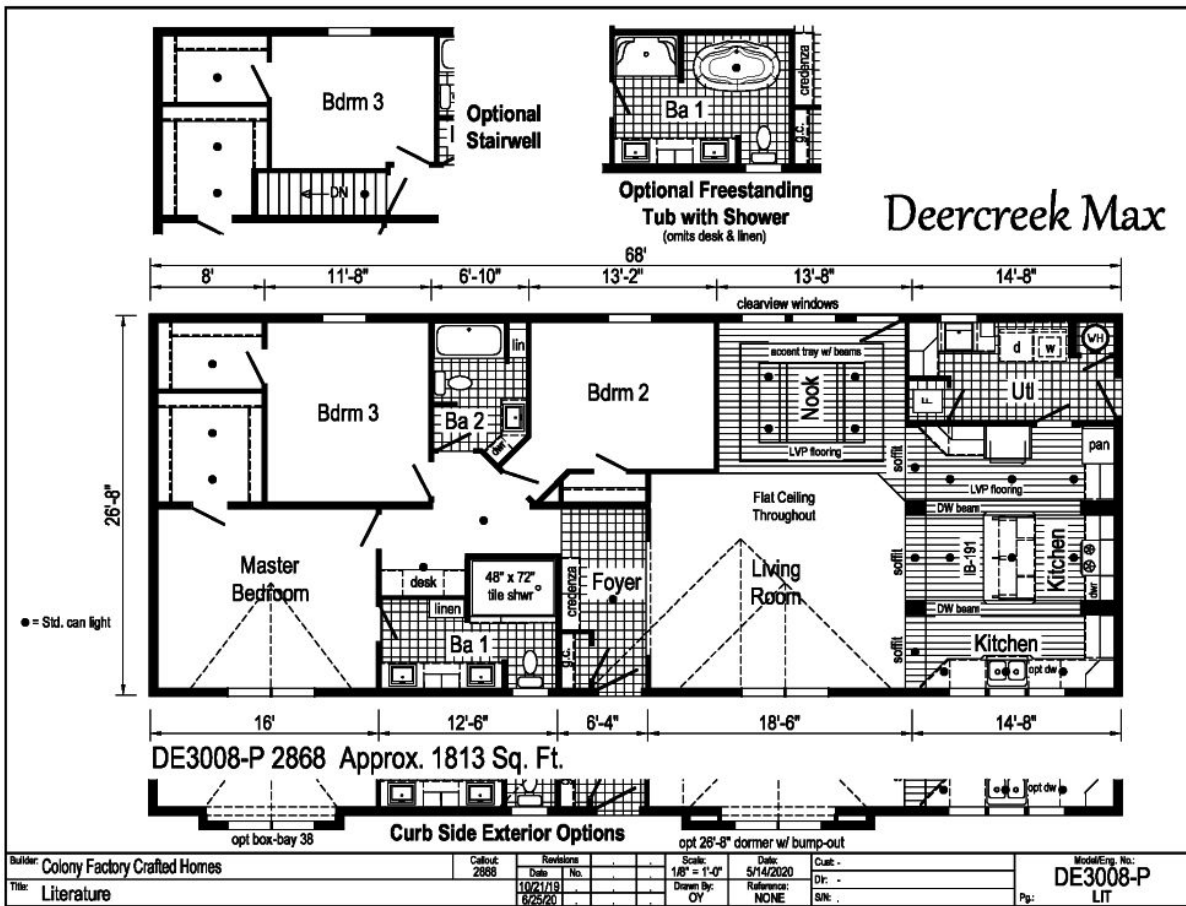
Notes:

PRINTABLE INFO SHEET

Series: Deercreek MAX Ranch
 Model: DE3008-P



Floorplan



CUSTOMER CONTACT

Notes:

PRINTABLE INFO SHEET

Series: Deercreek MAX Ranch
Model: DE3008-P



Standards & Features

INTERIOR

- Flat Ceiling Throughout
- Stipple Ceiling w/ Cove Moulding
- 8' Sidewall Height
- Primed Smooth Drywall Throughout
- LED Flush Mount Ceiling Lights
- Pre-Hung Door Jambs
- Mortise Hinges
- Lever Interior Passage Sets
- Floor Mount Door Stops
- Smoke Detectors With Battery Back-Up
- Wire Shelving in Guest Closet
- Designer Window Treatments
- White 6-Panel 30" Passage Doors
- Stem Lights over Island
- White or Profile Woodgrain Moulding
- Tray Ceiling

EXTERIOR

- Patina Lantern Light at Front Door
- Patina Square Lantern at Rear Door
- One GFI-Protected Exterior Receptacle
- Vinyl Dutch Lap Siding
- OSB Sheathing Under Siding
- 5/12 Roof Pitch with 10" Eaves
- Architectural Shingle Roof
- 12" Gable End Overhang
- Ridgevent Roof Ventilation System
- 38x80 Steel 6-Panel Front Door
- 34x80 Steel 6-Panel Rear Door
- Mulled Vinyl Insulated Windows w/Grids

EXTERIOR (continued)

- Window Lineals on Front Door Side

CONSTRUCTION

- 2x6 Transverse Floor, 16" centers**
- 2x6 Exterior Walls on 16" Centers**
- 3/4" T&G OSB Floor Decking
- 30# Roof Load
- Recessed Frame Design
- Energy Star Ready

KITCHEN

- 30" Deluxe Gas Range
- Power Range Hood with Light
- 18 Cubic Foot, No-Frost Refrigerator
- Black Sink - 33x19x7
- Tip-out Trays at Sink
- Huntington Brass Faucet
- Crescent Edge Countertops
- Full Ceramic Backsplash
- Refrigerator Surround
- 1 USB Receptacle

BATHS

- 60" 1-Piece Fiberglass Tub/Showers
- Tub Overdrapes & Rod
- 4x6 Ceramic Walk-in Shower
- 1.6 Gallon Per Flush Elongated Toilets
- China Stool, Tank and Lid
- China Sinks w/ Pop-up Drains
- Lighted Vent Fan in Each Bath
- Huntington Brass Brushed Nickel Faucets
- Vanity Lighting in Master
- Framed Mirrors

CUSTOMER CONTACT

Notes:

PRINTABLE INFO SHEET

Series: Deercreek MAX Ranch

Model: DE3008-P



Standards & Features (continued)

BATHS (continued)

Anti-Scald Faucets in Tub/Shower
Shower Drain with Removable Strainer

CABINETRY

Evermore Custom Cabinetry
(KCMA Certified)
Laminate Crescent Edge Countertops
Hardwood Mission Style Cabinet Doors
Contemporary Cabinet Hardware
Hardwood Moulding on Cabinets
Lined Overhead Cabinets
42" Height Overhead Cabinets
Drawer over Door Base Cabinets
Extended Sink Cabinet
Concealed Cabinet Hinges
Deluxe Roller Guide Drawer System
Base and Center Shelves in Base Cabinets
Base Shelf in Vanities
36" High Bath Vanities
Hardwood Stiles

UTILITIES

Plumbed and Wired for Washer
Vented and Wired for Dryer
100 AMP Electrical Service
40 Gallon Electric Water Heater
with Pan
Auto Ignition Gas Furnace
White 6-Panel Furnace Door w/Grill
Perimeter Heating System
Air Exchanger System for Furnace
Aluminum Heat Ducts

UTILITIES (continued)

In-Floor Cross-Over Heating System
Copper Wiring Throughout
Main Water Line Shut-Off Valve
Programmable Thermostat
Water Shut-Off Valves
Exterior Water Faucet

FLOORING

Choice of various Styles of Textured
Carpet:
-Standard 16 oz 10 Choices Available
-Upgrade Styles 20 Choices Available
Rebond Carpet Pad with Tackstrip
Carpet Installation
Vinyl Plank Flooring per print
DiamondFlor per print

BEDROOMS

LED Flush Mount Lights
Egress Window Each Bedroom
Wire Shelving in Wardrobes
Switched LED Light in All Walk-In
Closets

INSULATION

R-22 Fiberglass in Floor
R-19 Fiberglass in Walls
R-31 Avg. Blown in Ceiling

CUSTOMER CONTACT

Notes:
