

PRINTABLE INFO SHEET

Series: Eastland Prime
Model: A32805-P Eastland Prime



About This Model

Style: Ranch / Bedrooms: 3 / Bathrooms: 2 / Square Feet: 1547

CUSTOMER CONTACT

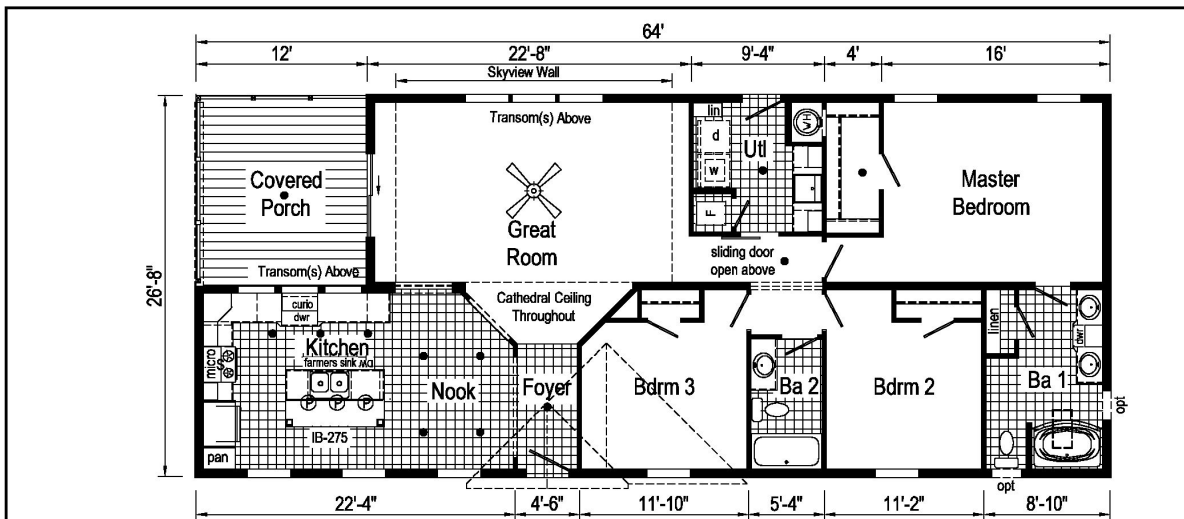
Notes:

PRINTABLE INFO SHEET

Series: Eastland Prime
 Model: A32805-P Eastland Prime



Floorplan



A32805-P 28x64 Approx. 1547 Sq. Ft.

Note: This floor plan is not available with hitch at Covered Porch end.

- = Std. can light
- P = Std. pendant light
- S = Std. 4" staggered overhead cabinets

Eastland Prime

Builder: Colony Factory Crafted Homes	Callout: 28x64	Revisions: 5/20/20	Scale: 1/8" = 1'-0"	Date: 2/1/21	Cust: -	Model/Eng. No.: A32805-P
Title: Literature	Date: 2/1/21	No.:	Drawn By: OY	Reference: NONE	Dt: -	LIT
	Date: 2/3/20				S/N: -	Pg: -

CUSTOMER CONTACT

Notes:

PRINTABLE INFO SHEET



Series: Eastland Prime
Model: A32805-P Eastland Prime

Standards & Features

INTERIOR

- Stipple Ceiling
- Cathedral Ceiling -Ranch
- Flat Ceiling - Single Section
- 90" Sidewall Height -Ranch**
- 8' Sidewall Height - Single Section
- Vinyl Wall Coverings on Gypsum Walls
- LED Flush Mount Ceiling Lights
- Pre-Hung Door Jambs
- Mortise Hinges
- Metal Interior Passage Sets
- Floor Mount Door Stops
- Smoke Detectors With Battery Back-Up
- Wire Shelving in Guest Closet
- Window Treatments
- 2" Mini Blinds Throughout
- White 6-Panel Passage Doors

Sliding Interior Door (per plan)

- 3 Industrial Pendant Lights over Island
- Skyview Wall with Transoms (Ranch)
- Ceiling Fan in Living Room
- Foyer Accent Bench (per plan)and Wall

EXTERIOR

- Black Lantern Light at Front & Rear Door
- One GFI-Protected Exterior Receptacle
- Vinyl Dutch Lap Siding
- Sheathing Board Under Siding
- Shingle Roof with
- 4" Eaves & Single Section (14/16)
- 10" Eaves & Ranch Homes (28/32)
- 12" Gable End Overhang

EXTERIOR (continued)

- Ridgevent Roof Ventilation System
- 38x82 Steel 6-Panel Front Door
- 34x82 Steel 6-Panel Rear Door
- Schlage Exterior Locksets Keyed Alike
- Mulled Vinyl Insulated Windows w/Grids
- 12" Louvered Shutters on Front Side

CONSTRUCTION

- 2x6 Transverse Floor & 12/14 wide
- 2x8 Transverse Floor & 16 wide
- 2x6 Exterior Walls on 16" Centers**
- 3/4" T&G OSB Floor Decking
- 20# Roof Load
- Recessed Frame Design

KITCHEN

Black Gold Appliance Package (Gas)

- Black Over the Range Microwave
- Curved Front Stainless Steel Sink
- Full Ceramic Backsplash at Range Wall
- 4" Laminate Backsplash Window Wall
- Structured Flow Pull Down Faucet
- Cabinetry Accent
- 1 USB Receptacle

BATHS

- Fiberglass Tub/Showers in Bath 2

Fiberglass Garden Tub/Shower in Master Bathroom

- Framed Mirrors

2 Light Bath Fixture over Mirrors

- 1.6 Gallon Per Flush Elongated Toilets

Square China Lav Sinks

- Double Lav Sinks in Master Bath

CUSTOMER CONTACT

Notes:

PRINTABLE INFO SHEET



Series: Eastland Prime
Model: A32805-P Eastland Prime

Standards & Features (continued)

Square China Lav Sinks (continued)

Laminate Backsplash in Baths

Cabinetry Accent

China Stool, Tank and Lid
Lighted Vent Fan in Each Bath
Empire Faucets
Anti-Scald Faucets in Tub/Shower
Shower Drain with Removable Strainer

CABINETRY

Evermore Custom Cabinetry (KCMA Certified)
MDF Mission Style Cabinet Doors
Brushed Nickel Cabinet Hardware
Crown Moulding on Kitchen Cabinets
Lined Overhead Cabinets
Laminate Countertops

Transitional Cabinet Pulls

Concealed Cabinet Hinges
Soft Close Drawer Guides
Base and Center Shelves in Base Cabinets
Base Shelf in Vanities
36" High Bath Vanities

UTILITIES

Plumbed and Wired for Washer
Vented and Wired for Dryer
100 AMP Electrical Service
30 Gallon Electric Water Heater with Pan
Gas Furnace
White 6-Panel Door w/Grill

UTILITIES (continued)

Air Exchanger System for Furnace
Aluminum Heat Ducts
In-Floor Cross-Over Heating System
Copper Wiring Throughout
Main Water Line Shut-Off Valve
Programmable Thermostat

FLOORING

Choice of Various Styles of Textured Carpet:
-Standard 18 oz. Lucerne/Innovations
-Upgrade Styles Available
Rebond Carpet Pad with Tackstrip
Carpet Installation
DiamondFlor & Vinyl Floor Coverings

Entry Foyer Vinyl

BEDROOMS

Switched Receptacle
Vinyl Wall Coverings in all Bedrooms
Egress Window Each Bedroom
Wire Shelving in Wardrobes
Switched Light in All Walk-In Closets

INSULATION

R-14 Fiberglass in Floor
R-19 Fiberglass in Walls
R-25 Avg. Blown in Ceiling -Single
R-28 Avg. Blown in Ceiling & Ranch

Modular Features

Note: Floorplan may be altered based on building code
Drywall
OSB Wrap

CUSTOMER CONTACT

Notes:

PRINTABLE INFO SHEET

Series: Eastland Prime
Model: A32805-P Eastland Prime



Standards & Features (continued)

Modular Features (continued)

- Wind Wrap
 - 40# Roof Load
 - Ice Guard
 - 5/12 Roof Pitch
 - 90 MPH Wind Zone C
 - 2x10 Floor Joist 16" O.C.
 - 2x4 Interior Walls
 - Architectural Shingles
 - Additional Exterior Receptacle
 - (1) Exterior Faucet
 - Low & E Gridded Windows w/ Argon
 - R-31 Ceiling Insulation
 - No Floor Insulation
 - Perimeter Heat
 - Water Shut Offs & Where Available
 - 200 AMP Panel Box
 - Hi-Efficiency Furnace
 - Premium Cabinetry
 - Premium Moulding Package
 - No Blinds or Curtains
 - Structured Flow Faucets
 - Drawer over Door Cabinet Construction
 - Soft Close Cabinet Doors
 - Phone Jack
- **Note Skyview Wall with Transoms Not Available

CUSTOMER CONTACT

Notes:
