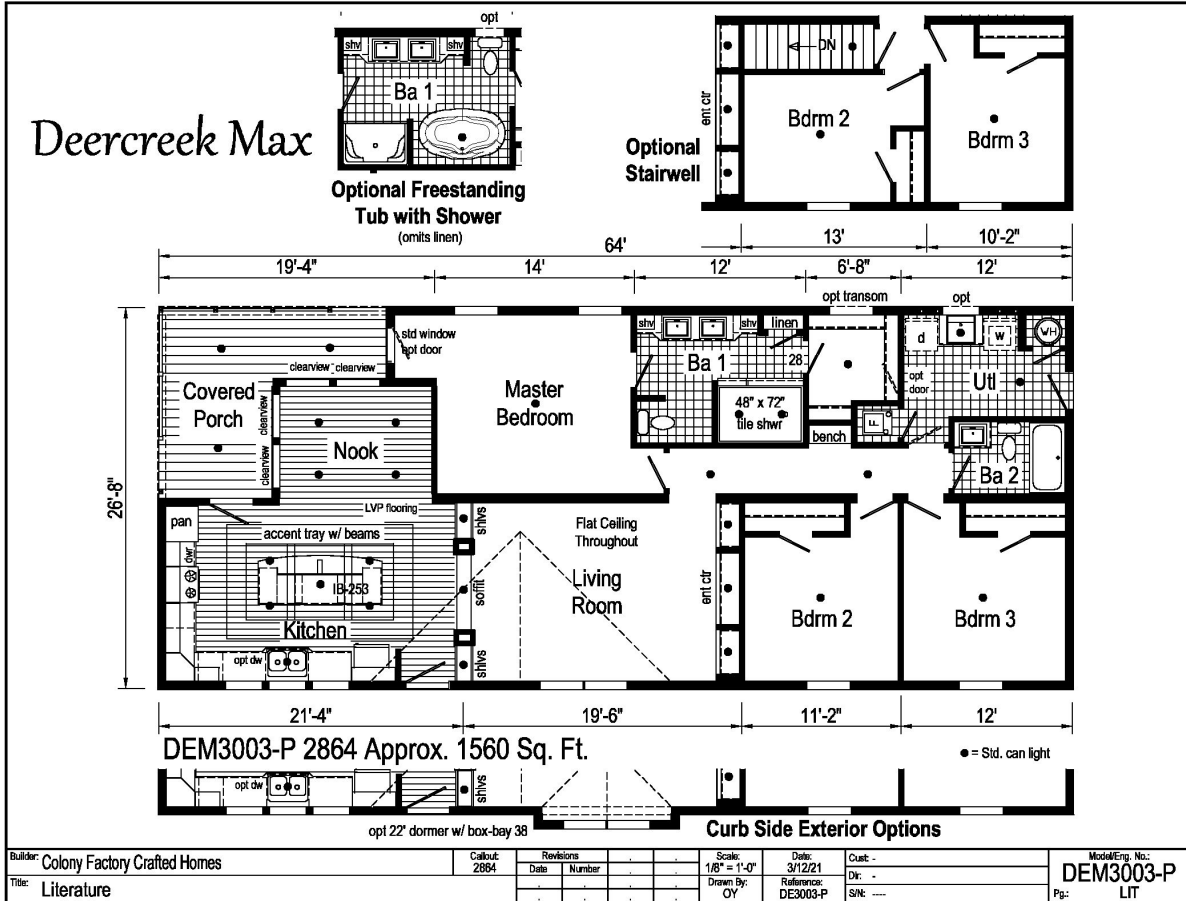


# PRINTABLE INFO SHEET

Series: Deercreek MAX Ranch  
 Model: DEM3003-P



## About This Model

Style: Ranch / Bedrooms: 3 / Bathrooms: 2 / Square Feet: 1560

## CUSTOMER CONTACT

Notes: \_\_\_\_\_

\_\_\_\_\_

\_\_\_\_\_

\_\_\_\_\_

# PRINTABLE INFO SHEET

**Series: Deercreek MAX Ranch**  
**Model: DEM3003-P**



## Standards & Features

### INTERIOR

- Flat Ceiling Throughout
- Smooth Coveless Ceiling
- 8' Sidewall Height
- Primed Smooth Drywall Throughout
- LED Flush Mount Ceiling Lights
- Pre-Hung Door Jambs
- Mortise Hinges
- Lever Interior Passage Sets
- Floor Mount Door Stops
- Smoke Detectors With Battery Back-Up
- Wire Shelving in Guest Closet
- 2" Mini Blinds
- Designer Window Treatments
- White 6-Panel Passage Doors
- Stem Lights over Island
- Tray Ceiling w/ Beams
- Contemporary Moulding Package

### EXTERIOR

- Black Lantern Light - Front & Rear Door
- One GFI-Protected Exterior Receptacle
- Vinyl Dutch Lap Siding
- OSB Sheathing Under Siding
- 5/12 Roof Pitch with 10" Eaves
- Architectural Shingle Roof
- 12" Gable End Overhang
- Ridgevent Roof Ventilation System
- 38x82 Steel 6-Panel Front Door
- 34x82 Steel 6-Panel Rear Door
- Schlage Exterior Locksets Keyed Alike

### INTERIOR (continued)

- Mulled Vinyl Insulated Windows w/Grids
- Window Lineals on Front Door Side

### CONSTRUCTION

- 2x6 Transverse Floor, 16" centers\*\*
- 2x6 Exterior Walls on 16" Centers\*\*
- 3/4" T&G OSB Floor Decking
- 30# Roof Load
- Recessed Frame Design

### KITCHEN

- 30" Deluxe Black Gas Range
- Power Range Hood with Light
- 18 Cubic Foot Black, No-Frost Refrigerator
- Black Sink
- Tip-out Trays at Sink
- Structured Flow Hi-Rise Faucet
- Crescent Edge Countertops
- Full Ceramic Backsplash
- Refrigerator Surround
- 1 USB Receptacle

### BATHS

- 60" 1-Piece Fiberglass Tub/Showers
- Tub Overdrapes & Rod
- 4x6 Ceramic Walk-in Shower
- 1.6 Gallon Per Flush Elongated Toilets
- China Stool, Tank and Lid
- Square China Lav Sinks
- Lighted Vent Fan in Each Bath
- Structured Flow Brushed Nickel Faucets
- Vanity Lighting in Master
- Framed Mirrors

## CUSTOMER CONTACT

Notes:

---

---

---

---

## PRINTABLE INFO SHEET

Series: Deercreek MAX Ranch

Model: DEM3003-P



## Standards & Features (continued)

### BATHS (continued)

Anti-Scald Faucets in Tub/Shower  
Shower Drain with Removable Strainer

### CABINETRY

Evermore Custom Cabinetry  
(KCMA Certified)  
Laminate Crescent Edge Countertops  
Premium Cabinetry  
Mission Style Cabinet Doors  
Transitional Cabinet Hardware  
Hardwood Moulding on Cabinets  
Lined Overhead Cabinets  
42" Height Overhead Cabinets  
Drawer over Door Base Cabinets  
Extended Sink Cabinet  
Concealed Cabinet Hinges  
Soft Close Drawers  
Dovetail Drawers  
Base and Center Shelves in Base Cabinets  
Base Shelf in Vanities  
36" High Bath Vanities

### UTILITIES

Plumbed and Wired for Washer  
Vented and Wired for Dryer  
100 AMP Electrical Service  
w/Extended Panel  
40 Gallon Electric Water Heater  
with Pan  
Hi-Efficiency Gas Furnace  
White 6-Panel Furnace Door w/Grill  
Perimeter Heating System

### UTILITIES (continued)

Air Exchanger System for Furnace  
Aluminum Heat Ducts  
In-Floor Cross-Over Heating System  
Copper Wiring Throughout  
Main Water Line Shut-Off Valve  
Programmable Thermostat  
Water Shut-Off Valves  
Exterior Water Faucet

### FLOORING

Choice of Various Styles of Textured  
Carpet:  
-Standard 18 oz. Lucerne/Innovations  
-Upgrade Styles Available  
Rebond Carpet Pad with Tackstrip  
Carpet Installation  
Vinyl Plank Flooring per print  
DiamondFlor Vinyl Flooring per print

### BEDROOMS

LED Flush Mount Lights  
Egress Window Each Bedroom  
Wire Shelving in Wardrobes  
Switched LED Light in All Walk-In  
Closets

### INSULATION

R-22 Fiberglass in Floor  
R-19 Fiberglass in Walls  
R-31 Avg. Blown in Ceiling

## CUSTOMER CONTACT

Notes:

---

---

---

---