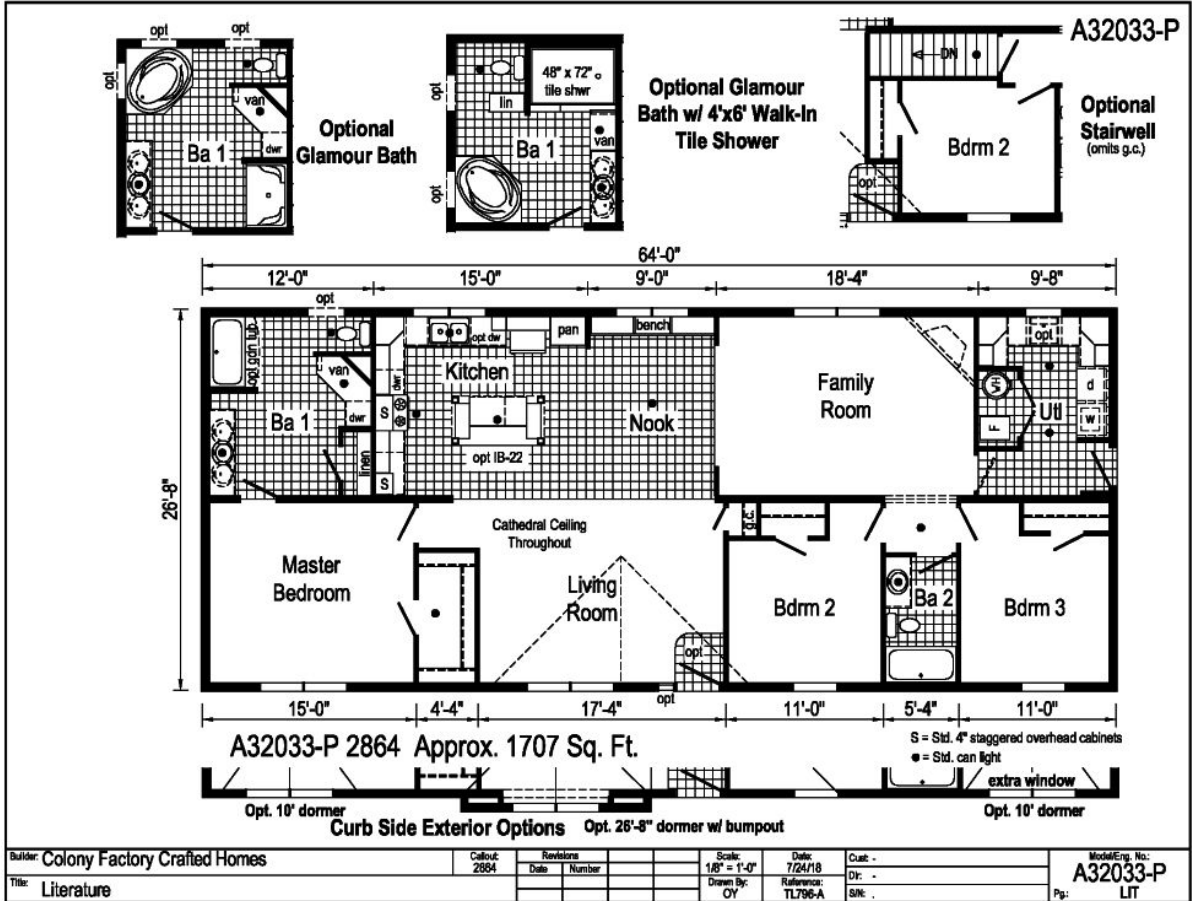


PRINTABLE INFO SHEET

Series: Eastland Concepts Ranch

Model: A32033-P



About This Model

Style: Ranch / Bedrooms: 3 / Bathrooms: 2 / Square Feet: 1707

CUSTOMER CONTACT

Notes:

PRINTABLE INFO SHEET

Series: Eastland Concepts Ranch

Model: A32033-P



Standards & Features

INTERIOR

- Cathedral Ceiling Throughout
- Stipple Ceiling
- 7'6" Sidewall Height
- Vinyl Wall Coverings on Gypsum Walls
- LED Flush Mount Ceiling Lights
- Pre-Hung Door Jambs
- Mortise Hinges
- Metal Interior Passage Sets
- Floor Mount Door Stops
- Smoke Detectors With Battery Back-Up
- Wire Shelving in Guest Closet
- Valance Window Treatments
- 1" Mini Blinds Throughout
- White 6-Panel 30" Passage Doors

EXTERIOR

- Patina Lantern Light at Front Door
- Patina Square Lantern at Rear Door
- One GFI-Protected Exterior Receptacle
- Vinyl Dutch Lap Siding
- Sheathing Board Under Siding
- Shingle Roof with
- 4" Eaves – Single Section (14/16)
- 10" Eaves – Ranch Homes (28/32)
- 12" Gable End Overhang
- Ridgevent Roof Ventilation System
- 38x80 Steel 6-Panel Front Door
- 34x80 Steel 6-Panel Rear Door
- Mulled Vinyl Insulated Windows w/Grids

EXTERIOR (continued)

- 12" Louvered Shutters on Front Door Side

CONSTRUCTION

- 2x6 Transverse Floor – 12/14 wide
- 2x8 Transverse Floor – 16 wide
- 2x6 Exterior Walls on 16" Centers**
- 3/4" T&G OSB Floor Decking
- 20# Roof Load
- Recessed Frame Design

KITCHEN

- 30" Deluxe Gas Range
- Power Range Hood with Light
- 18 Cubic Foot, No-Frost Refrigerator
- Stainless Steel Sink - 33x19x7
- Empire Gooseneck Faucet
- 1 USB Receptacle

BATHS

- 60" Tub/Showers
- Framed Mirrors
- 1.6 Gallon Per Flush Elongated Toilets
- China Stool, Tank and Lid
- Lighted Vent Fan in Each Bath
- Empire Faucets
- Anti-Scald Faucets in Tub/Shower
- Shower Drain with Removable Strainer

CABINETRY

- Evermore Custom Cabinetry (KCMA Certified)
- MDF Mission Style Cabinet Doors
- Brushed Nickel Cabinet Hardware

CUSTOMER CONTACT

Notes:

PRINTABLE INFO SHEET

Series: Eastland Concepts Ranch

Model: A32033-P



Standards & Features (continued)

CABINETRY (continued)

- Crown Moulding on Kitchen Cabinets
- Lined Overhead Cabinets
- 30" Staggered Height Overhead Cabinets
- Laminate Countertops
- Concealed Cabinet Hinges
- Deluxe Roller Guide Drawer System
- Base and Center Shelves in Base Cabinets
- Base Shelf in Vanities
- 36" High Bath Vanities

UTILITIES

- Plumbed and Wired for Washer
- Vented and Wired for Dryer
- 100 AMP Electrical Service
- 30 Gallon Electric Water Heater with Pan
- Gas Furnace
- White 6-Panel Door w/Grill
- Air Exchanger System for Furnace
- Aluminum Heat Ducts
- In-Floor Cross-Over Heating System
- Copper Wiring Throughout
- Main Water Line Shut-Off Valve
- Air Conditioning Thermostat With 5-Wires

FLOORING

- Choice of various Styles of Textured Carpet:
- Standard 16 oz 10 Choices Available

FLOORING (continued)

- Upgrade Styles 20 Choices Available
- Rebond Carpet Pad with Tackstrip
- Carpet Installation
- DiamondFlor & Floor Coverings

BEDROOMS

- Switched Recept
- Vinyl Wall Coverings in all Bedrooms
- Egress Window Each Bedroom
- Wire Shelving in Wardrobes
- Switched Light in All Walk-In Closets

INSULATION

- R-14 Fiberglass in Floor
- R-19 Fiberglass in Walls
- R-28 Avg Blown in Ceiling

CUSTOMER CONTACT

Notes:
