

# PRINTABLE INFO SHEET

**Series: Eastland Concepts**  
**Singlewides**  
**Model: A12024-V**



## About This Model

**Style: Single / Bedrooms: 3 / Bathrooms: 2 / Square Feet: 1140**

## CUSTOMER CONTACT

Notes:

---

---

---

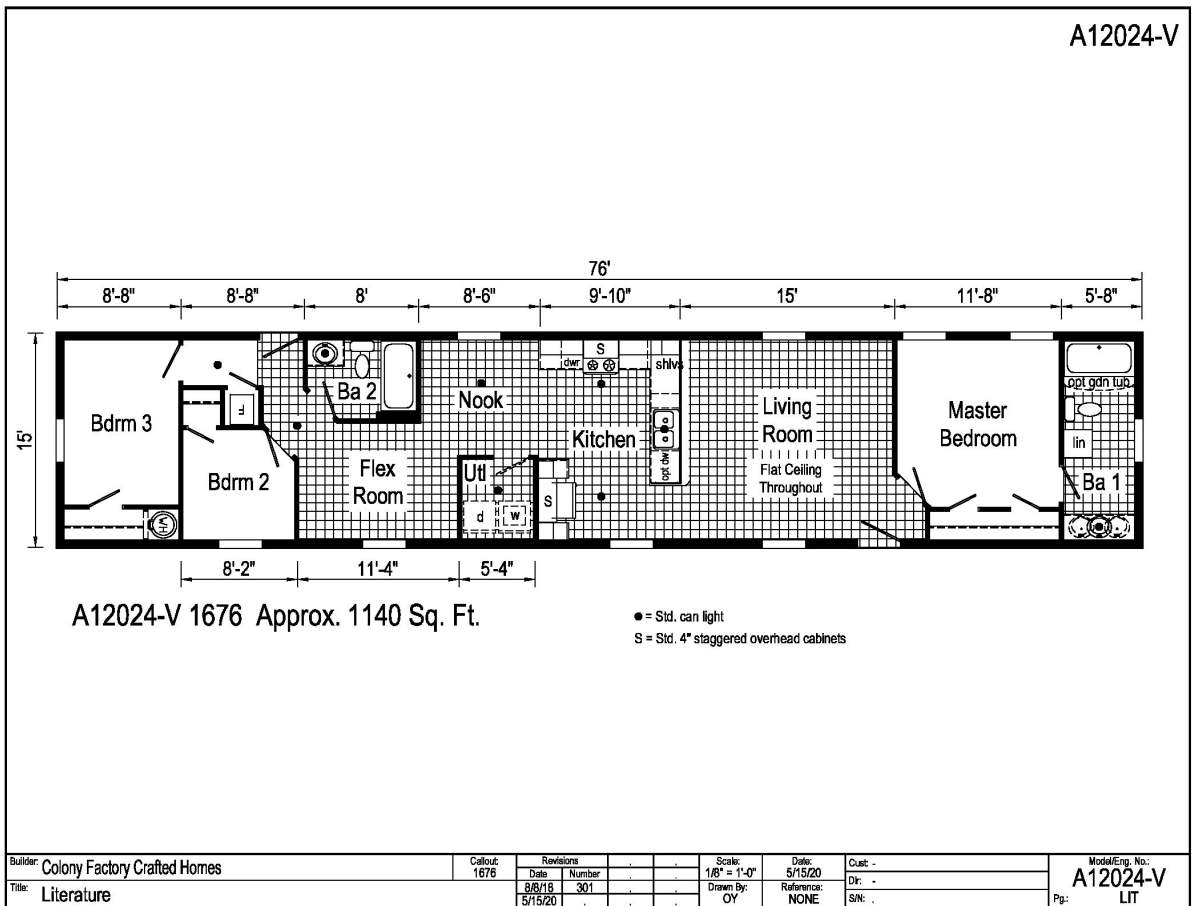
---

# PRINTABLE INFO SHEET

Series: Eastland Concepts  
 Singlewides  
 Model: A12024-V



## Floorplan



## CUSTOMER CONTACT

Notes:

---



---



---



---

# PRINTABLE INFO SHEET



**Series: Eastland Concepts**  
**Singlewides**  
**Model: A12024-V**

## Standards & Features

### INTERIOR

- Flat Ceiling Throughout
- Stipple Ceiling
- 8' Sidewall Height
- Vinyl Wall Coverings on Gypsum Walls
- LED Flush Mount Ceiling Lights
- Pre-Hung Door Jambs
- Mortise Hinges
- Metal Interior Passage Sets
- Floor Mount Door Stops
- Smoke Detectors With Battery Back-Up
- Wire Shelving in Guest Closet
- Window Treatments
- 2" Mini Blinds Throughout
- White 2-Panel Passage Doors

### EXTERIOR

- Gatsby Light - Front & Rear Door
- One GFI-Protected Exterior Receptacle
- Vinyl Dutch Lap Siding
- Sheathing Board Under Siding
- Shingle Roof with
- 4" Eaves & Single Section (14/16)
- 10" Eaves & Ranch Homes (28/32)
- 12" Gable End Overhang
- Ridgevent Roof Ventilation System
- 38x82 Fiberglass 6-Panel Front Door
- 34x82 Fiberglass 6-Panel Rear Door
- Schlage Exterior Locksets Keyed Alike
- Mulled Vinyl Insulated Windows w/Grids

### EXTERIOR (continued)

- 15" Raised Panel Shutters on Front Door Side

### CONSTRUCTION

- 2x6 Transverse Floor & 12/14 wide
- 2x8 Transverse Floor & 16 wide
- 2x6 Exterior Walls on 16" Centers\*\*
- 3/4" T&G OSB Floor Decking
- 20# Roof Load
- Recessed Frame Design

### KITCHEN

- 30" Deluxe Black Gas Range
- Power Range Hood with Light
- 18 Cubic Foot Black, No-Frost Refrigerator
- Stainless Steel Sink - 33x22x8
- Structure Flow Single Lever w/ Sprayer Faucet
- 1 USB Receptacle

### BATHS

- 60" Fiberglass Tub/Showers
- 1.6 Gallon Per Flush Elongated Toilets
- China Stool, Tank and Lid
- Lighted Vent Fan in Each Bath
- Empire Faucets
- Anti-Scald Faucets in Tub/Shower
- Shower Drain with Removable Strainer
- Square China Lav
- Furniture Style Lav

### CABINETRY

- Evermore Custom Cabinetry (KCMA Certified)

## CUSTOMER CONTACT

Notes:

---

---

---

---

# PRINTABLE INFO SHEET



**Series: Eastland Concepts**  
**Singlewides**  
**Model: A12024-V**

## Standards & Features (continued)

### CABINETRY (continued)

- MDF Mission Style Cabinet Doors
- Brushed Nickel Cabinet Hardware
- Contemporary Crown Moulding on Kitchen Cabinets
- Lined Overhead Cabinets
- 30" Staggered Height Overhead Cabinets
- Laminate Countertops
- Laminate Backsplashes
- Concealed Cabinet Hinges
- Soft Close Drawer Guides
- Dovetail Drawers
- Base and Center Shelves in Base Cabinets
- Base Shelf in Vanities
- 36" High Bath Vanities

### UTILITIES

- Plumbed and Wired for Washer
- Vented and Wired for Dryer
- 100 AMP Electrical Service w/ Extended Panel
- 30 Gallon Electric Water Heater with Pan
- Gas Furnace
- White 2-Panel Door w/Grill
- Air Exchanger System for Furnace
- Aluminum Heat Ducts
- Perimeter Heat
- In-Floor Cross-Over Heating System
- Copper Wiring Throughout
- Main Water Line Shut-Off Valve

### UTILITIES (continued)

- Programmable Thermostat

### FLOORING

- Choice of Various Styles of Textured Carpet:
- Standard Shaw Take Away
- Upgrade Styles Available
- Rebond Carpet Pad with Tackstrip
- Carpet Installation
- Shaw Fortress & Vinyl Floor Coverings

### BEDROOMS

- Switched Light Each Bedroom (LED)
- Vinyl Wall Coverings in all Bedrooms
- Egress Window Each Bedroom
- Wire Shelving in Wardrobes
- Switched Light in All Walk-In Closets

### INSULATION

- R-14 Fiberglass in Floor
- R-19 Fiberglass in Walls
- R-25 Avg. Blown in Ceiling -Single
- R-28 Avg. Blown in Ceiling & Ranch

## CUSTOMER CONTACT

Notes:

---

---

---

---