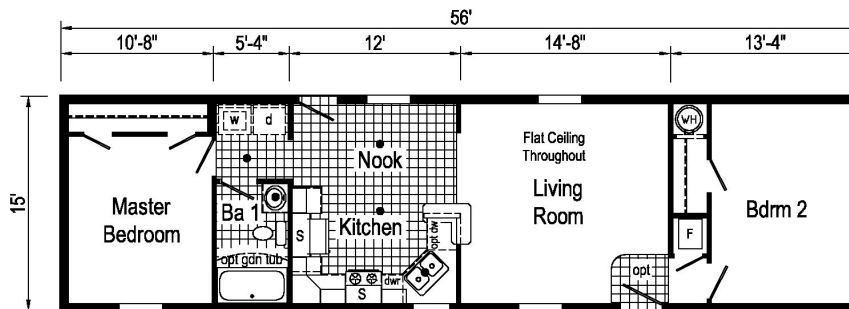


## PRINTABLE INFO SHEET

Series: Eastland Concepts

Singlewides

Model: A12016-V



A12016-V 1656 Approx. 840 Sq. Ft.

S = Std. 4" staggered overhead cabinets

● = Std. can light

Builder: Colony Factory Crafted Homes	Callout: 1656	Revisions:	Scale: 1/8" = 1'-0"	Date: 06/05/2018	Client: -	Model/Eng. No.: A12016-V
Title: Literature		Date: 8/7/18	Drawn By: OY	Reference: DD110-A	Dir: -	LIT
		Date: 5/15/20			SIN: -	Pg: -

## About This Model

Style: Single / Bedrooms: 2 / Bathrooms: 1 / Square Feet: 840

## CUSTOMER CONTACT

Notes:

---



---



---



---

## PRINTABLE INFO SHEET

**Series: Eastland Concepts**

**Singlewides**

**Model: A12016-V**



## Standards & Features

### INTERIOR

Flat Ceiling Throughout  
Stipple Ceiling  
8' Sidewall Height  
Vinyl Wall Coverings on Gypsum Walls  
LED Flush Mount Ceiling Lights  
Pre-Hung Door Jambs  
Mortise Hinges  
Metal Interior Passage Sets  
Floor Mount Door Stops  
Smoke Detectors With Battery Back-Up  
Wire Shelving in Guest Closet  
Window Treatments  
2" Mini Blinds Throughout  
White 2-Panel Passage Doors

### EXTERIOR

Gatsby Light - Front & Rear Door  
One GFI-Protected Exterior Receptacle  
Vinyl Dutch Lap Siding  
Sheathing Board Under Siding  
Shingle Roof with  
4" Eaves & Single Section (14/16)  
10" Eaves & Ranch Homes (28/32)  
12" Gable End Overhang  
Ridgevent Roof Ventilation System  
38x82 Fiberglass 6-Panel Front Door  
34x82 Fiberglass 6-Panel Rear Door  
Schlage Exterior Locksets Keyed Alike  
Mulled Vinyl Insulated Windows w/Grids

### EXTERIOR (continued)

15" Raised Panel Shutters on Front Door Side

### CONSTRUCTION

2x6 Transverse Floor & 12/14 wide  
2x8 Transverse Floor & 16 wide  
2x6 Exterior Walls on 16" Centers\*\*  
& 3/4" T&G OSB Floor Decking  
20# Roof Load  
Recessed Frame Design

### KITCHEN

30" Deluxe Black Gas Range  
Power Range Hood with Light  
18 Cubic Foot Black, No-Frost Refrigerator  
Stainless Steel Sink - 33x22x8  
Structure Flow Single Lever  
w/ Sprayer Faucet  
1 USB Receptacle

### BATHS

60" Fiberglass Tub/Shower  
1.6 Gallon Per Flush Elongated Toilets  
China Stool, Tank and Lid  
Lighted Vent Fan in Each Bath  
Empire Faucets  
Anti-Scald Faucets in Tub/Shower  
Shower Drain with Removable Strainer  
Square China Lav  
Furniture Style Lav

### CABINETRY

Evermore Custom Cabinetry  
(KCMA Certified)

## CUSTOMER CONTACT

Notes:

---

---

---

---

## PRINTABLE INFO SHEET

**Series: Eastland Concepts**

**Singlewides**

**Model: A12016-V**



## Standards & Features (continued)

### **CABINETRY (continued)**

MDF Mission Style Cabinet Doors  
Brushed Nickel Cabinet Hardware  
Contemporary Crown Moulding on Kitchen Cabinets  
Lined Overhead Cabinets  
30" Staggered Height Overhead Cabinets  
Laminate Countertops  
Laminate Backsplashes  
Concealed Cabinet Hinges  
Soft Close Drawer Guides  
Dovetail Drawers  
Base and Center Shelves in Base Cabinets  
Base Shelf in Vanities  
36" High Bath Vanities

### **UTILITIES**

Plumbed and Wired for Washer  
Vented and Wired for Dryer  
100 AMP Electrical Service w/  
Extended Panel  
30 Gallon Electric Water Heater  
with Pan  
Gas Furnace  
White 2-Panel Door w/Grill  
Air Exchanger System for Furnace  
Aluminum Heat Ducts  
Perimeter Heat  
In-Floor Cross-Over Heating System  
Copper Wiring Throughout  
Main Water Line Shut-Off Valve

### **UTILITIES (continued)**

Programmable Thermostat

### **FLOORING**

Choice of Various Styles of Textured  
Carpet:  
-Standard Shaw Take Away  
-Upgrade Styles Available  
Rebond Carpet Pad with Tackstrip  
Carpet Installation  
Shaw Fortress & Vinyl Floor Coverings

### **BEDROOMS**

Switched Light Each Bedroom (LED)  
Vinyl Wall Coverings in all Bedrooms  
Egress Window Each Bedroom  
Wire Shelving in Wardrobes  
Switched Light in All Walk-In Closets

### **INSULATION**

R-14 Fiberglass in Floor  
R-19 Fiberglass in Walls  
R-25 Avg. Blown in Ceiling -Single  
R-28 Avg. Blown in Ceiling & Ranch

## CUSTOMER CONTACT

Notes:

---

---

---

---