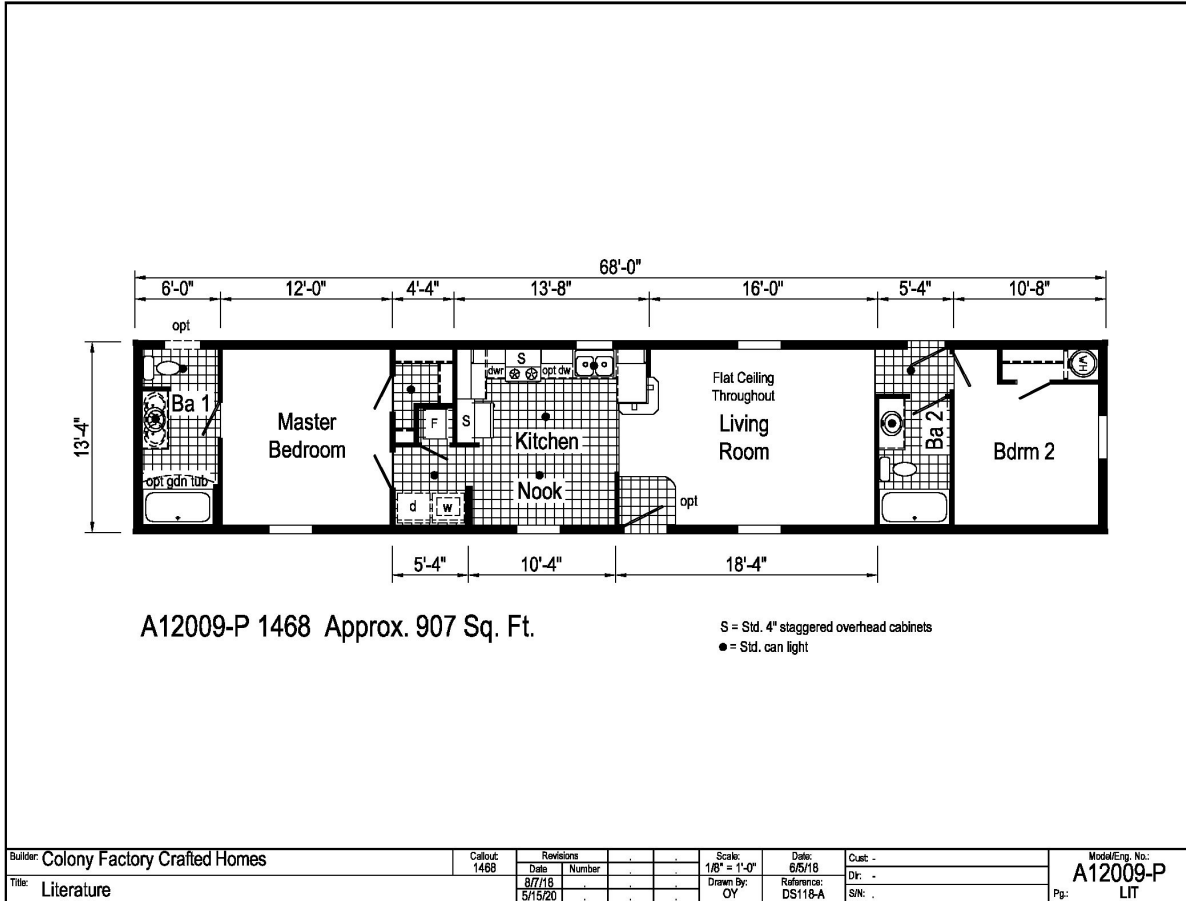


# PRINTABLE INFO SHEET

Series: Eastland Concepts  
 Singlewides  
 Model: A12009-P



## About This Model

Style: Single / Bedrooms: 2 / Bathrooms: 2 / Square Feet: 907

## CUSTOMER CONTACT

Notes: \_\_\_\_\_

\_\_\_\_\_

\_\_\_\_\_

\_\_\_\_\_

# PRINTABLE INFO SHEET

**Series: Eastland Concepts**  
**Singlewides**  
**Model: A12009-P**



## Standards & Features

### INTERIOR

- Cathedral Ceiling Throughout
- Stipple Ceiling
- 7'6" Sidewall Height
- Vinyl Wall Coverings on Gypsum Walls
- LED Flush Mount Ceiling Lights
- Pre-Hung Door Jambs
- Mortise Hinges
- Metal Interior Passage Sets
- Floor Mount Door Stops
- Smoke Detectors With Battery Back-Up
- Wire Shelving in Guest Closet
- Valance Window Treatments
- 1" Mini Blinds Throughout
- White 6-Panel 30" Passage Doors

### EXTERIOR

- Patina Lantern Light at Front Door
- Patina Square Lantern at Rear Door
- One GFI-Protected Exterior Receptacle
- Vinyl Dutch Lap Siding
- Sheathing Board Under Siding
- Shingle Roof with
- 4" Eaves &dash; Single Section (14/16)
- 10" Eaves &dash; Ranch Homes (28/32)
- 12" Gable End Overhang
- Ridgevent Roof Ventilation System
- 38x80 Steel 6-Panel Front Door
- 34x80 Steel 6-Panel Rear Door
- Mulled Vinyl Insulated Windows w/Grids

### EXTERIOR (continued)

- 12" Louvered Shutters on Front Door Side

### CONSTRUCTION

- 2x6 Transverse Floor &dash; 12/14 wide
- 2x8 Transverse Floor &dash; 16 wide
- 2x6 Exterior Walls on 16" Centers\*\*
- 3/4" T&G OSB Floor Decking
- 20# Roof Load
- Recessed Frame Design

### KITCHEN

- 30" Deluxe Gas Range
- Power Range Hood with Light
- 18 Cubic Foot, No-Frost Refrigerator
- Stainless Steel Sink - 33x19x7
- Empire Gooseneck Faucet
- 1 USB Receptacle

### BATHS

- 60" Tub/Showers
- Framed Mirrors
- 1.6 Gallon Per Flush Elongated Toilets
- China Stool, Tank and Lid
- Lighted Vent Fan in Each Bath
- Empire Faucets
- Anti-Scald Faucets in Tub/Shower
- Shower Drain with Removable Strainer

### CABINETRY

- Evermore Custom Cabinetry (KCMA Certified)
- MDF Mission Style Cabinet Doors
- Brushed Nickel Cabinet Hardware

## CUSTOMER CONTACT

Notes:

---

---

---

---

## PRINTABLE INFO SHEET

**Series: Eastland Concepts**  
**Singlewides**  
**Model: A12009-P**



## Standards & Features (continued)

### CABINETRY (continued)

Crown Moulding on Kitchen Cabinets  
Lined Overhead Cabinets  
30" Staggered Height Overhead Cabinets  
Laminate Countertops  
Concealed Cabinet Hinges  
Deluxe Roller Guide Drawer System  
Base and Center Shelves in Base Cabinets  
Base Shelf in Vanities  
36" High Bath Vanities

### UTILITIES

Plumbed and Wired for Washer  
Vented and Wired for Dryer  
100 AMP Electrical Service  
30 Gallon Electric Water Heater with Pan  
Gas Furnace  
White 6-Panel Door w/Grill  
Air Exchanger System for Furnace  
Aluminum Heat Ducts  
In-Floor Cross-Over Heating System  
Copper Wiring Throughout  
Main Water Line Shut-Off Valve  
Air Conditioning Thermostat With 5-Wires

### FLOORING

Choice of various Styles of Textured Carpet:  
-Standard 16 oz 10 Choices Available

### FLOORING (continued)

-Upgrade Styles 20 Choices Available  
Rebond Carpet Pad with Tackstrip  
Carpet Installation  
DiamondFlor & Floor Coverings

### BEDROOMS

Switched Recept  
Vinyl Wall Coverings in all Bedrooms  
Egress Window Each Bedroom  
Wire Shelving in Wardrobes  
Switched Light in All Walk-In Closets

### INSULATION

R-14 Fiberglass in Floor  
R-19 Fiberglass in Walls  
R-25 Avg Blown in Ceiling

## CUSTOMER CONTACT

Notes:

---

---

---

---