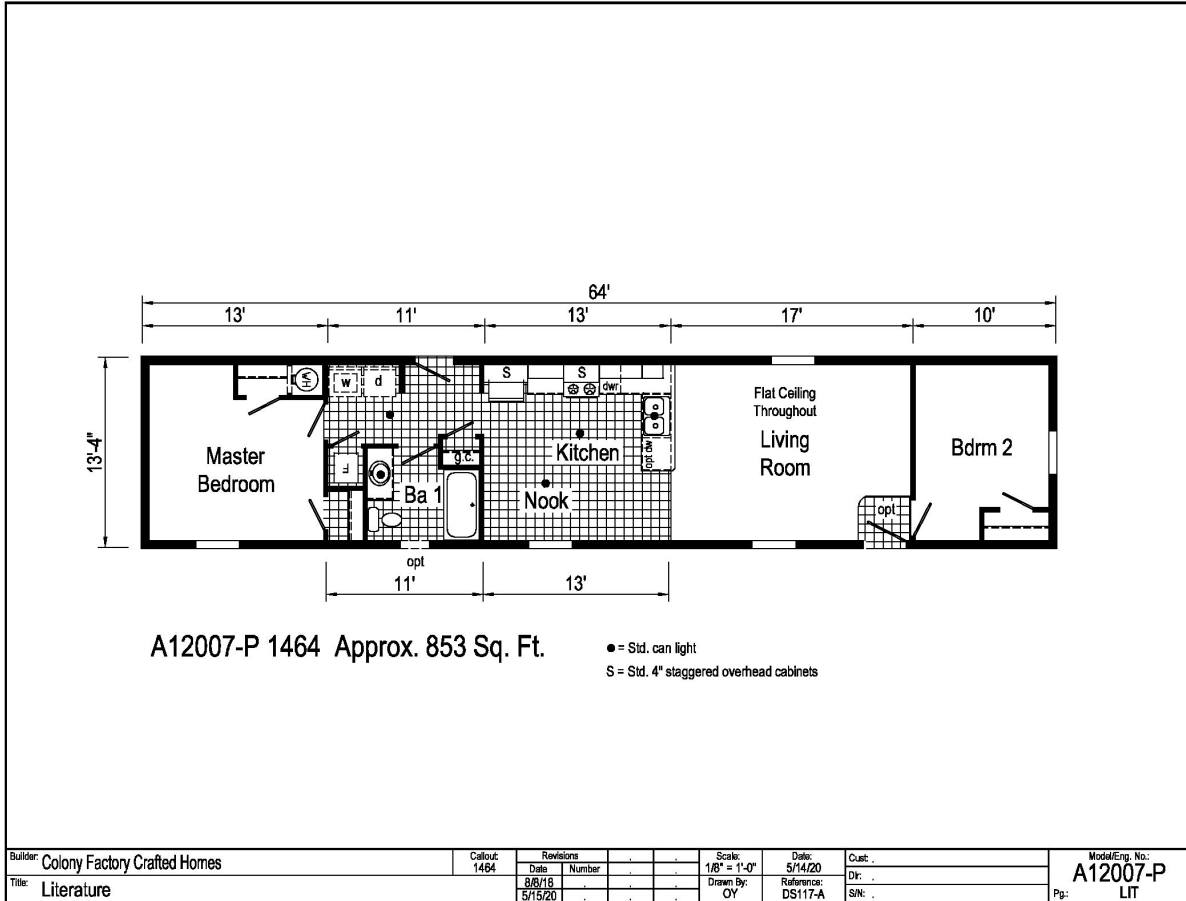


# PRINTABLE INFO SHEET

Series: Eastland Concepts  
 Singlewides  
 Model: A12007-P



## About This Model

Style: Single / Bedrooms: 2 / Bathrooms: 1 / Square Feet: 853

## CUSTOMER CONTACT

Notes:

---



---



---



---

# PRINTABLE INFO SHEET

**Series: Eastland Concepts**  
**Singlewides**  
**Model: A12007-P**



## Standards & Features

### INTERIOR

Cathedral Ceiling Throughout  
Stipple Ceiling  
7'6" Sidewall Height  
Vinyl Wall Coverings on Gypsum Walls  
LED Flush Mount Ceiling Lights  
Pre-Hung Door Jambs  
Mortise Hinges  
Metal Interior Passage Sets  
Floor Mount Door Stops  
Smoke Detectors With Battery Back-Up  
Wire Shelving in Guest Closet  
Valance Window Treatments  
1" Mini Blinds Throughout  
White 6-Panel 30" Passage Doors

### EXTERIOR

Patina Lantern Light at Front Door  
Patina Square Lantern at Rear Door  
One GFI-Protected Exterior Receptacle  
Vinyl Dutch Lap Siding  
Sheathing Board Under Siding  
Shingle Roof with  
4" Eaves &ndash; Single Section (14/16)  
10" Eaves &ndash; Ranch Homes (28/32)  
12" Gable End Overhang  
Ridgevent Roof Ventilation System  
38x80 Steel 6-Panel Front Door  
34x80 Steel 6-Panel Rear Door  
Mulled Vinyl Insulated Windows w/Grids

### EXTERIOR (continued)

12" Louvered Shutters on Front Door Side

### CONSTRUCTION

2x6 Transverse Floor &ndash; 12/14 wide  
2x8 Transverse Floor &ndash; 16 wide  
2x6 Exterior Walls on 16" Centers\*\*  
&frac34;" T&amp;G OSB Floor Decking  
20# Roof Load  
Recessed Frame Design

### KITCHEN

30" Deluxe Gas Range  
Power Range Hood with Light  
18 Cubic Foot, No-Frost Refrigerator  
Stainless Steel Sink - 33x19x7  
Empire Gooseneck Faucet  
1 USB Receptacle

### BATHS

60" Tub/Showers  
Framed Mirrors  
1.6 Gallon Per Flush Elongated Toilets  
China Stool, Tank and Lid  
Lighted Vent Fan in Each Bath  
Empire Faucets  
Anti-Scald Faucets in Tub/Shower  
Shower Drain with Removable Strainer

### CABINETRY

Evermore Custom Cabinetry (KCMA Certified)  
MDF Mission Style Cabinet Doors  
Brushed Nickel Cabinet Hardware

## CUSTOMER CONTACT

Notes:

---

---

---

---

## PRINTABLE INFO SHEET

**Series: Eastland Concepts**  
**Singlewides**  
**Model: A12007-P**



## Standards & Features (continued)

### CABINETRY (continued)

Crown Moulding on Kitchen Cabinets  
Lined Overhead Cabinets  
30" Staggered Height Overhead Cabinets  
Laminate Countertops  
Concealed Cabinet Hinges  
Deluxe Roller Guide Drawer System  
Base and Center Shelves in Base Cabinets  
Base Shelf in Vanities  
36" High Bath Vanities

### UTILITIES

Plumbed and Wired for Washer  
Vented and Wired for Dryer  
100 AMP Electrical Service  
30 Gallon Electric Water Heater with Pan  
Gas Furnace  
White 6-Panel Door w/Grill  
Air Exchanger System for Furnace  
Aluminum Heat Ducts  
In-Floor Cross-Over Heating System  
Copper Wiring Throughout  
Main Water Line Shut-Off Valve  
Air Conditioning Thermostat With 5-Wires

### FLOORING

Choice of various Styles of Textured Carpet:  
-Standard 16 oz 10 Choices Available

### FLOORING (continued)

-Upgrade Styles 20 Choices Available  
Rebond Carpet Pad with Tackstrip  
Carpet Installation  
DiamondFlor & Floor Coverings

### BEDROOMS

Switched Recept  
Vinyl Wall Coverings in all Bedrooms  
Egress Window Each Bedroom  
Wire Shelving in Wardrobes  
Switched Light in All Walk-In Closets

### INSULATION

R-14 Fiberglass in Floor  
R-19 Fiberglass in Walls  
R-25 Avg Blown in Ceiling

## CUSTOMER CONTACT

Notes:

---

---

---

---