

PRINTABLE INFO SHEET

Series: Beacon Ranch Modular

Model: DB4105-V



About This Model

Style: Ranch / Bedrooms: 2 / Bathrooms: 2 / Square Feet: 1080

CUSTOMER CONTACT

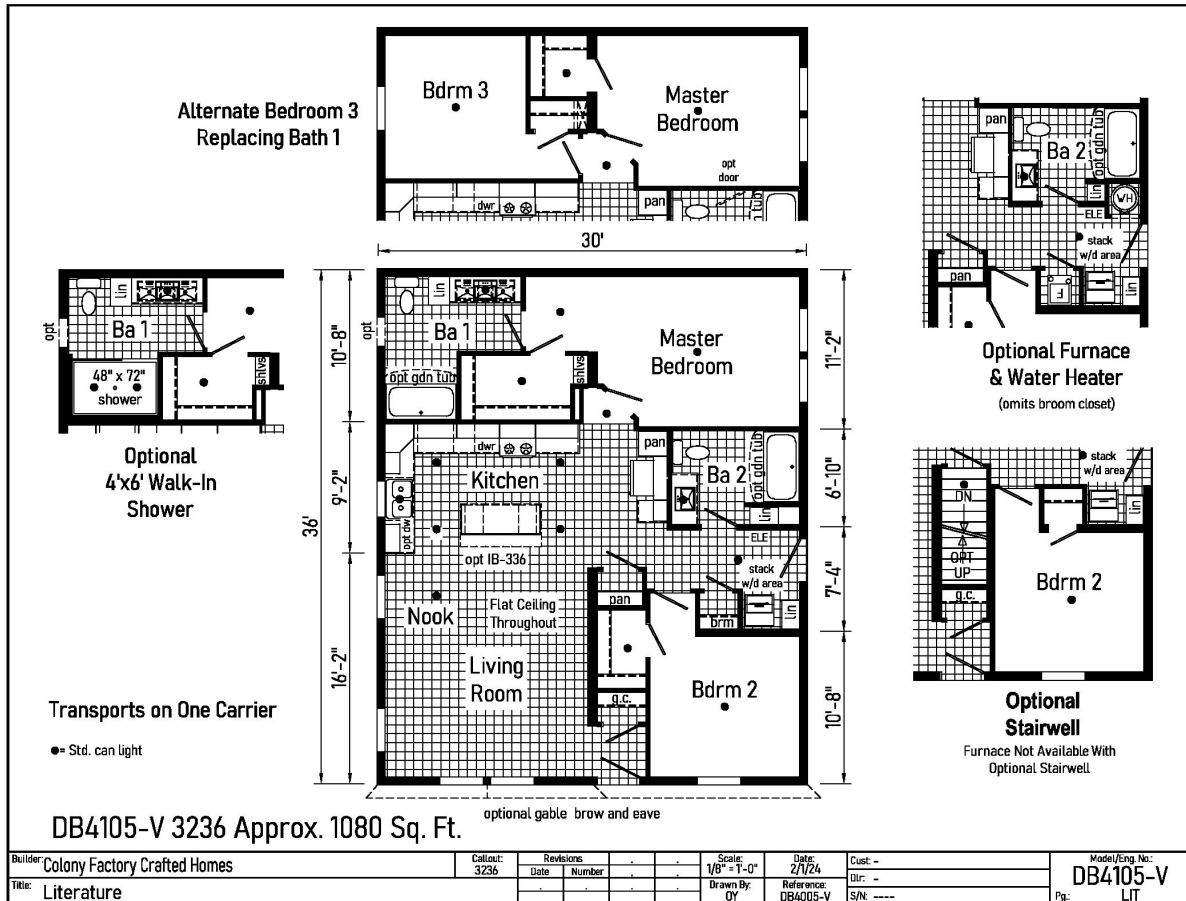
Notes:

PRINTABLE INFO SHEET

Series: Beacon Ranch Modular
 Model: DB4105-V



Floorplan



CUSTOMER CONTACT

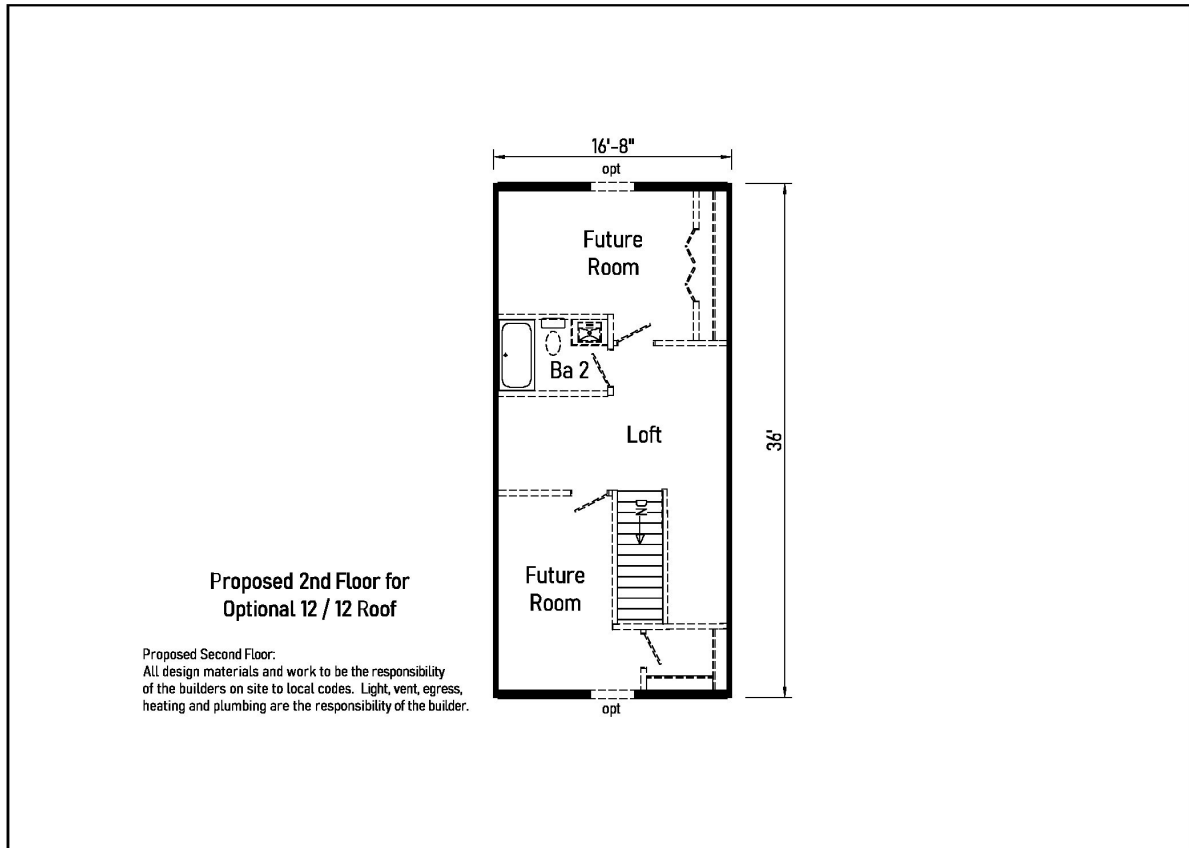
Notes:

PRINTABLE INFO SHEET

Series: Beacon Ranch Modular
 Model: DB4105-V



Floorplan



**Proposed 2nd Floor for
 Optional 12 / 12 Roof**

Proposed Second Floor:
 All design materials and work to be the responsibility
 of the builders on site to local codes. Light, vent, egress,
 heating and plumbing are the responsibility of the builder.

Builder: Colony Factory Crafted Homes	Callout: 3236	Revisions: Date Number	Scale: 1'-0" = 1'-0" Drawn By: OY	Date: 2/1/24 Reference: DB4105-1	Cust: - Blr: - S/N: ----	Model/Eng No.: DB4105-V Pg: LIT 2
---------------------------------------	---------------	-----------------------------	--------------------------------------	-------------------------------------	--------------------------------	---

CUSTOMER CONTACT

Notes:

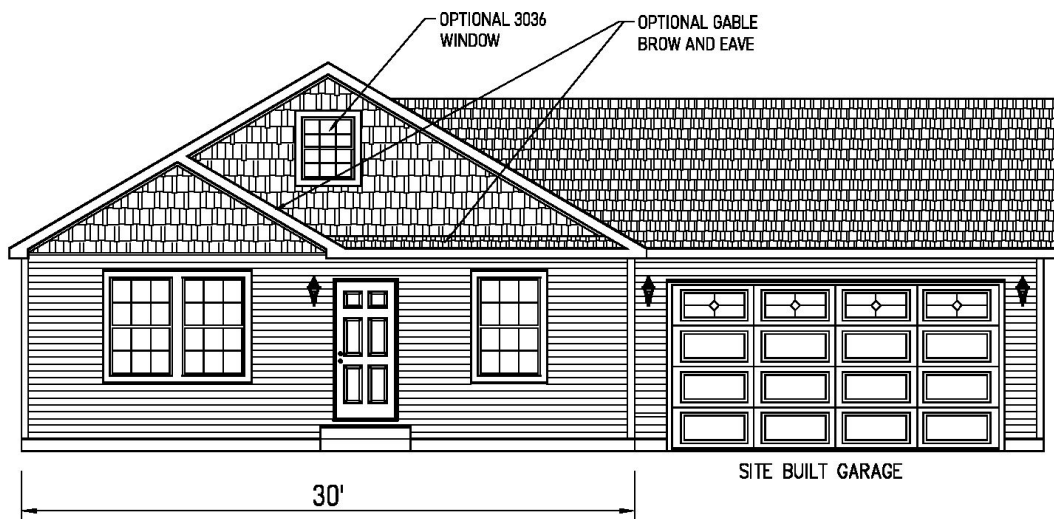
PRINTABLE INFO SHEET

Series: Beacon Ranch Modular

Model: DB4105-V



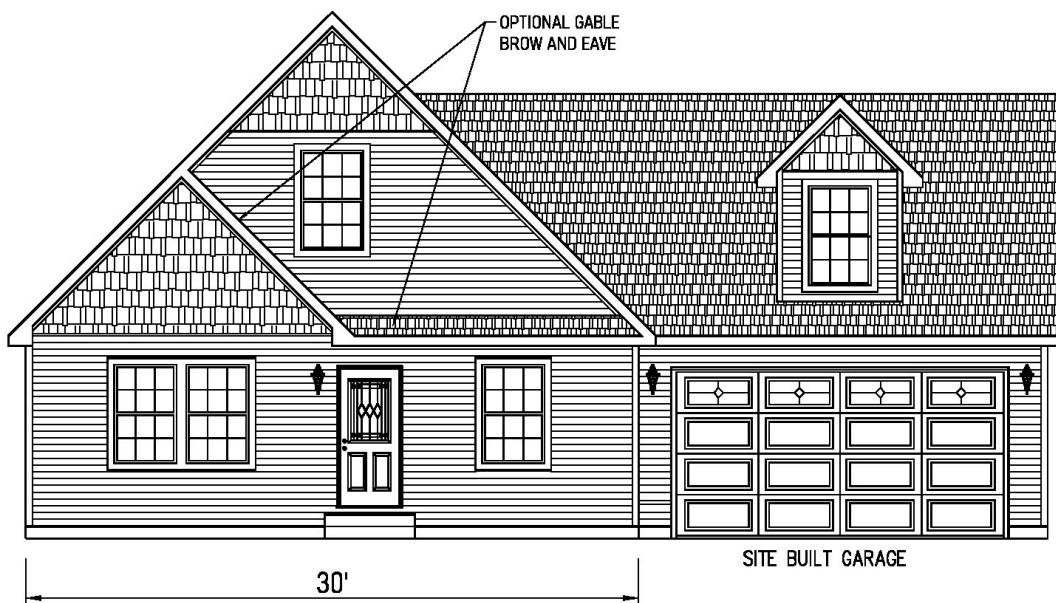
Floorplan



DB4105-V FRONT EXTERIOR ELEVATION

Shown with 7/12 attic roof

SOME FEATURES MAY BE OPTIONAL OR ADDED ON SITE



DB4105-V FRONT EXTERIOR ELEVATION

Shown with 12/12 roof and dormers

SOME FEATURES MAY BE OPTIONAL OR ADDED ON SITE

PRINTABLE INFO SHEET

Series: Beacon Ranch Modular
Model: DB4105-V



Standards & Features

INTERIOR

Flat Ceiling Throughout
Coveless Smooth Ceiling
8' Sidewall Height
Primed Smooth Drywall Throughout
LED Flush Mount Ceiling Lights
Pre-Hung Door Jambs
Mortise Hinges
Metal Interior Passage Sets
Floor Mount Door Stops
Smoke Detectors With Battery Back-Up
Wire Shelving in Guest Closets
Residential Switches and Receptacles
White 6-Panel Passage Doors

EXTERIOR

Patina Square Light at Front Door
Seeded Glass Light at Rear Door
Two GFI-Protected Exterior Receptacle
Vinyl Dutch Lap Siding
OSB Sheathing Under Siding w/ Wind Wrap
5/12 Architectural Shingle Roof with 10" Eaves
Ice Shield
8" Gable End Overhang
Ridgevent Roof Ventilation System
38x82 6-Panel Front Door
38x82 6-Panel Rear Door
Schlage Exterior Locksets Keyed Alike
Mulled Vinyl Insulated Windows w/Grids Low-E with Argon

EXTERIOR (continued)

12" Raised Panel Shutters on Front Door Side

CONSTRUCTION

2x10 Transverse Floor on 16" center**
2x6 Exterior Walls on 16" Centers**
¾" T&G OSB Floor Decking
40# Roof Load
90 Mile Exposure C Wind Load Design

KITCHEN

30" Deluxe Black Gas Range
Power Range Hood with Light
18 Cubic Foot Black, No-Frost Refrigerator
Stainless Steel Sink - 33x19x7
Structured Flow Hi-Rise Faucet
1 USB Receptacle

BATHS

60" 1-Piece Fiberglass Tub/Showers
1.6 Gallon Per Flush Elongated Toilets
China Stool, Tank and Lid
Lighted Vent Fan in Each Bath
Structured Flow Faucets
Square China Lav Sinks
Anti-Scald Faucets in Tub/Shower
Shower Drain w/ Removable Strainer

CABINETRY

Mission Style Cabinet Doors
Premium Cabinetry
Brushed Nickel Cabinet Hardware
Crown Moulding on Kitchen Cabinets
Lined Overhead Cabinets

CUSTOMER CONTACT

Notes:

PRINTABLE INFO SHEET

Series: Beacon Ranch Modular
Model: DB4105-V



Standards & Features (continued)

CABINETRY (continued)

- 42" Overhead Cabinets
- Laminate Countertops & Backsplash
- Soft Close Concealed Cabinet Hinges
- Dovetail Drawers
- Soft Close Drawer Guides
- Base Shelves in Base Cabinets
- Base Shelf in Vanities
- 36" High Bath Vanities

UTILITIES

- Perimeter Heat Registers & Boots
- Plumbed and Wired for Washer
- Wired for Dryer
- 200 AMP Electrical Service
- Copper Wiring Throughout
- Programmable Thermostat
- Exterior Water Faucet
- Water Shut-off Valves - Where Available
- Telephone Jack

FLOORING

- Choice of Various Styles of Textured Carpet:
- Standard 18 oz. Lucerne/Innovations
- Upgrade Styles Available
- Rebond Carpet Pad with Tackstrip
- Carpet Installation
- DiamondFlor & Vinyl Floor Coverings

BEDROOMS

- Switched Receptacle
- Egress Window Each Bedroom
- Wire Shelving in Wardrobes

BEDROOMS (continued)

- Switched Light in All Walk-In Closets

INSULATION

- R-19 Fiberglass in Walls
- R-31 Avg. Blown in Ceiling

CUSTOMER CONTACT

Notes:
