

PRINTABLE INFO SHEET

Series: Beacon Ranch Modular

Model: DB4104-V



About This Model

Style: Ranch / Bedrooms: 3 / Bathrooms: 1 / Square Feet: 1080

CUSTOMER CONTACT

Notes:

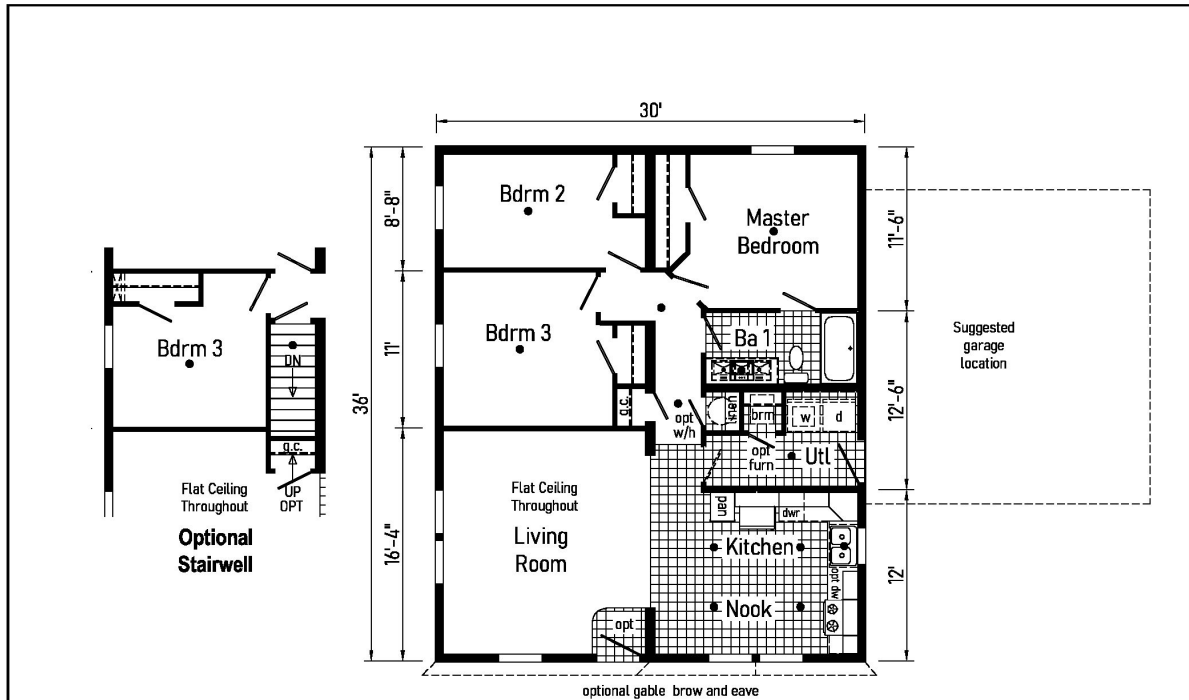
PRINTABLE INFO SHEET

Series: Beacon Ranch Modular

Model: DB4104-V



Floorplan



DB4104-V 3236 Approx. 1080 Sq. Ft. ● = Std. can light
 Transported on one carrier

Builder: Colony Factory Crafted Homes	Callout: 3236	Revisions:	Scale: 1/8" = 1'-0"	Date: 1/31/24	Cust: -	Model/Eng No.: DB4104-V
Title: Literature		Date: / /	Drawn By: OY	Reference: DB4004-V	Blr: -	Pg: LIT
		Number: /		S/N: ----		

CUSTOMER CONTACT

Notes:

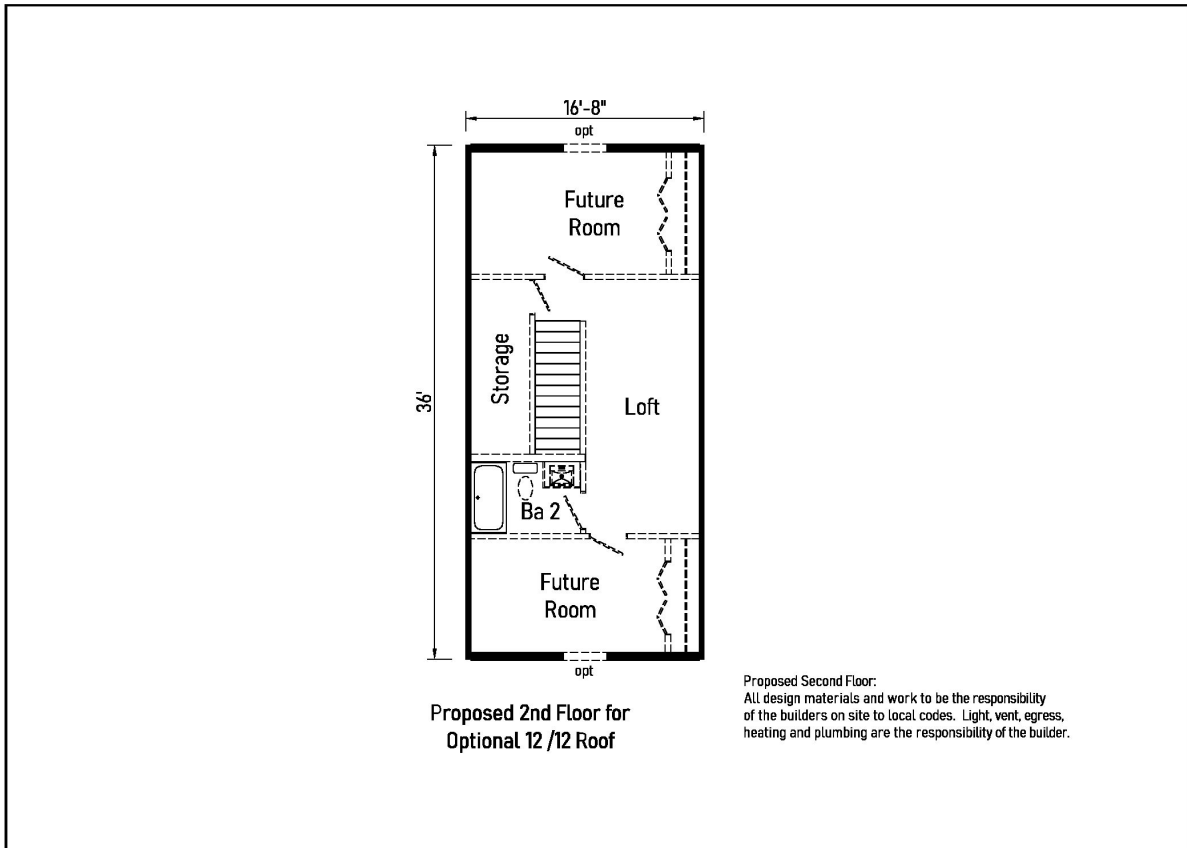
PRINTABLE INFO SHEET

Series: Beacon Ranch Modular

Model: DB4104-V



Floorplan



Proposed 2nd Floor for
Optional 12/12 Roof

Proposed Second Floor:
All design materials and work to be the responsibility
of the builders on site to local codes. Light, vent, egress,
heating and plumbing are the responsibility of the builder.

Builder: Colony Factory Crafted Homes	Callout: 3236	Revisions:	Scale: 1'-0" = 1'-0"	Date: 1/31/2024	Cust: -	Model/Eng No.: DB4104-V
Title: Literature		Date: Number:	Drawn By: OY	Reference: DB4004-V	Blr: -	Pg: LITZ

CUSTOMER CONTACT

Notes:

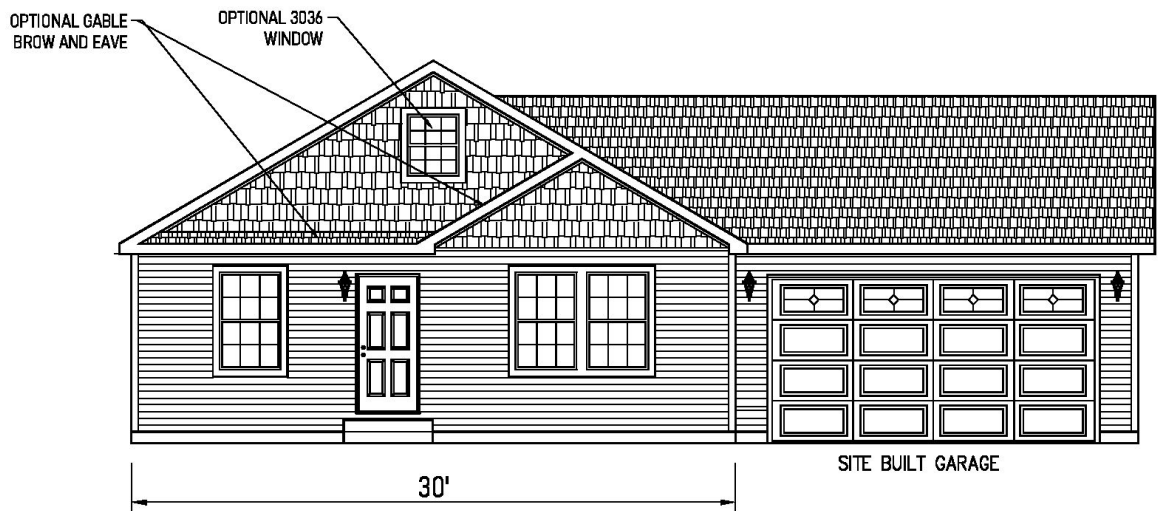
PRINTABLE INFO SHEET

Series: Beacon Ranch Modular

Model: DB4104-V



Floorplan



DB4104-V FRONT EXTERIOR ELEVATION

Shown with 7/12 attic roof

SOME FEATURES MAY BE OPTIONAL OR ADDED ON SITE



DB4104-V FRONT EXTERIOR ELEVATION

Shown with 12/12 roof and dormers

SOME FEATURES MAY BE OPTIONAL OR ADDED ON SITE

PRINTABLE INFO SHEET

Series: Beacon Ranch Modular
Model: DB4104-V



Standards & Features

INTERIOR

- Flat Ceiling Throughout
- Coveless Smooth Ceiling
- 8' Sidewall Height
- Primed Smooth Drywall Throughout
- LED Flush Mount Ceiling Lights
- Pre-Hung Door Jambs
- Mortise Hinges
- Metal Interior Passage Sets
- Floor Mount Door Stops
- Smoke Detectors With Battery Back-Up
- Wire Shelving in Guest Closets
- Residential Switches and Receptacles
- White 6-Panel Passage Doors

EXTERIOR

- Patina Square Light at Front Door
- Seeded Glass Light at Rear Door
- Two GFI-Protected Exterior Receptacle
- Vinyl Dutch Lap Siding
- OSB Sheathing Under Siding w/ Wind Wrap
- 5/12 Architectural Shingle Roof with 10" Eaves
- Ice Shield
- 8" Gable End Overhang
- Ridgevent Roof Ventilation System
- 38x82 6-Panel Front Door
- 38x82 6-Panel Rear Door
- Schlage Exterior Locksets Keyed Alike
- Mulled Vinyl Insulated Windows w/Grids Low-E with Argon

EXTERIOR (continued)

- 12" Raised Panel Shutters on Front Door Side

CONSTRUCTION

- 2x10 Transverse Floor on 16" center**
- 2x6 Exterior Walls on 16" Centers**
- 3/4" T&G OSB Floor Decking
- 40# Roof Load
- 90 Mile Exposure C Wind Load Design

KITCHEN

- 30" Deluxe Black Gas Range
- Power Range Hood with Light
- 18 Cubic Foot Black, No-Frost Refrigerator
- Stainless Steel Sink - 33x19x7
- Structured Flow Hi-Rise Faucet
- 1 USB Receptacle

BATHS

- 60" 1-Piece Fiberglass Tub/Showers
- 1.6 Gallon Per Flush Elongated Toilets
- China Stool, Tank and Lid
- Lighted Vent Fan in Each Bath
- Structured Flow Faucets
- Square China Lav Sinks
- Anti-Scald Faucets in Tub/Shower
- Shower Drain w/ Removable Strainer

CABINETRY

- Mission Style Cabinet Doors
- Premium Cabinetry
- Brushed Nickel Cabinet Hardware
- Crown Moulding on Kitchen Cabinets
- Lined Overhead Cabinets

CUSTOMER CONTACT

Notes:

PRINTABLE INFO SHEET

Series: Beacon Ranch Modular
Model: DB4104-V



Standards & Features (continued)

CABINETRY (continued)

42" Overhead Cabinets
Laminate Countertops & Backsplash
Soft Close Concealed Cabinet Hinges
Dovetail Drawers
Soft Close Drawer Guides
Base Shelves in Base Cabinets
Base Shelf in Vanities
36" High Bath Vanities

UTILITIES

Perimeter Heat Registers & Boots
Plumbed and Wired for Washer
Wired for Dryer
200 AMP Electrical Service
Copper Wiring Throughout
Programmable Thermostat
Exterior Water Faucet
Water Shut-off Valves - Where Available
Telephone Jack

FLOORING

Choice of Various Styles of Textured Carpet:
-Standard 18 oz. Lucerne/Innovations
-Upgrade Styles Available
Rebond Carpet Pad with Tackstrip
Carpet Installation
DiamondFlor & Vinyl Floor Coverings

BEDROOMS

Switched Receptacle
Egress Window Each Bedroom
Wire Shelving in Wardrobes

BEDROOMS (continued)

Switched Light in All Walk-In Closets

INSULATION

R-19 Fiberglass in Walls
R-31 Avg. Blown in Ceiling

CUSTOMER CONTACT

Notes:
