

PRINTABLE INFO SHEET

Series: Deercreek MAX Ranch

Model: DE3003-P



About This Model

Style: Ranch / Bedrooms: 3 / Bathrooms: 2 / Square Feet: 1560

CUSTOMER CONTACT

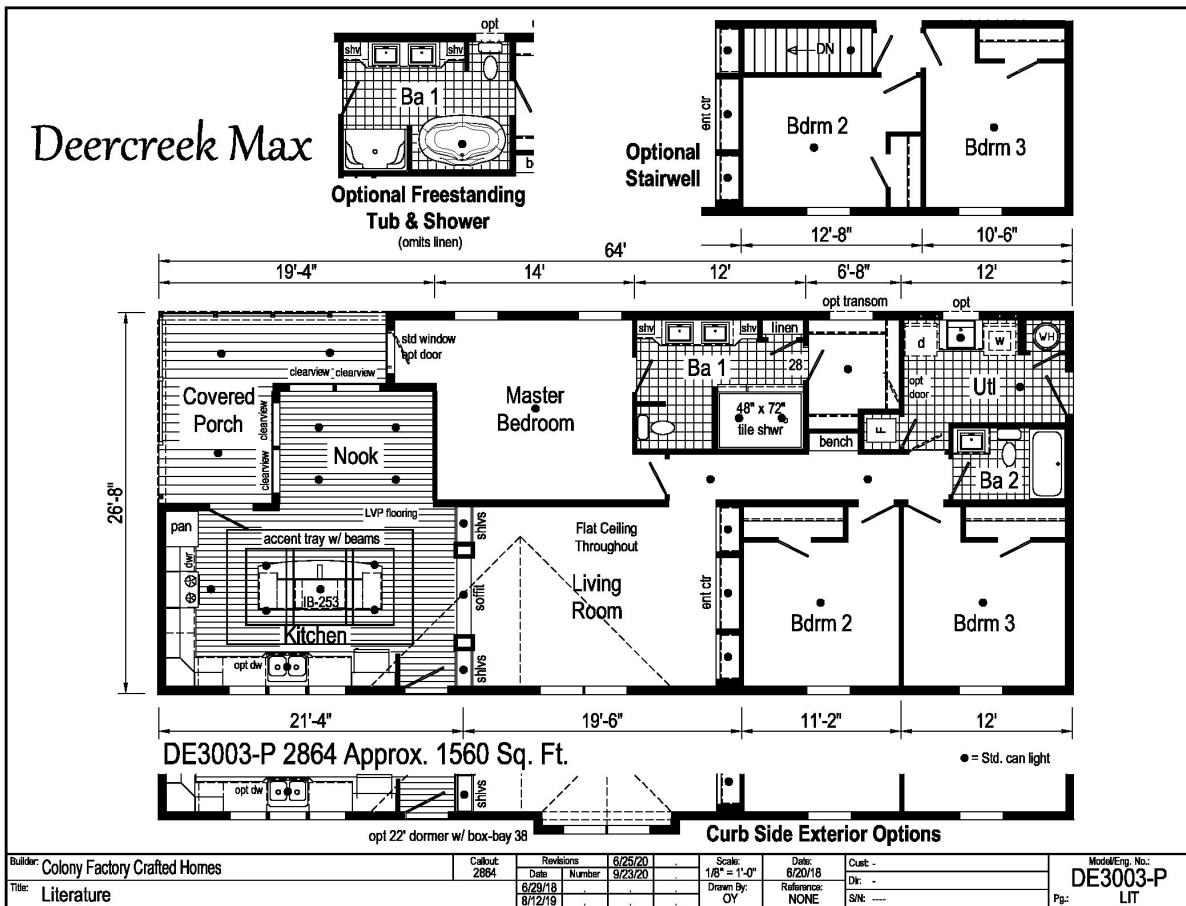
Notes:

PRINTABLE INFO SHEET

Series: Deercreek MAX Ranch
 Model: DE3003-P



Floorplan



CUSTOMER CONTACT

Notes:

PRINTABLE INFO SHEET

Series: Deercreek MAX Ranch
Model: DE3003-P



Standards & Features

INTERIOR

Flat Ceiling Throughout

- Smooth Coveless Ceiling
- 8' Sidewall Height
- Primed Smooth Drywall Throughout
- LED Flush Mount Ceiling Lights
- Pre-Hung Door Jambs
- Mortise Hinges
- Lever Interior Passage Sets
- Floor Mount Door Stops
- Smoke Detectors With Battery Back-Up
- Wire Shelving in Guest Closet
- 2" Mini Blinds
- Designer Window Treatments
- White 6-Panel Passage Doors
- Stem Lights over Island

Tray Ceiling w/ Beams

Contemporary Moulding Package

EXTERIOR

- Black Lantern Light - Front & Rear Door
- One GFI-Protected Exterior Receptacle
- Vinyl Dutch Lap Siding
- OSB Sheathing Under Siding
- 5/12 Roof Pitch with 10" Eaves**
- Architectural Shingle Roof
- 12" Gable End Overhang
- Ridgevent Roof Ventilation System
- 38x82 Steel 6-Panel Front Door
- 34x82 Steel 6-Panel Rear Door
- Schlage Exterior Locksets Keyed Alike

5/12 Roof Pitch with 10" Eaves (continued)

Mulled Vinyl Insulated Windows w/Grids

Window Lineals on Front Door Side

CONSTRUCTION

- 2x6 Transverse Floor, 16" centers**
- 2x6 Exterior Walls on 16" Centers**
- 3/4" T&G OSB Floor Decking
- 30# Roof Load
- Recessed Frame Design

KITCHEN

- 30" Deluxe Black Gas Range
- Power Range Hood with Light
- 18 Cubic Foot Black, No-Frost Refrigerator
- Black Sink
- Tip-out Trays at Sink
- Structured Flow Hi-Rise Faucet
- Crescent Edge Countertops

Full Ceramic Backsplash

- Refrigerator Surround
- 1 USB Receptacle

BATHS

- 60" 1-Piece Fiberglass Tub/Showers
- Tub Overdrapes & Rod
- 4x6 Ceramic Walk-in Shower
- 1.6 Gallon Per Flush Elongated Toilets
- China Stool, Tank and Lid
- Square China Lav Sinks
- Lighted Vent Fan in Each Bath

Structured Flow Brushed Nickel Faucets

- Vanity Lighting in Master
- Framed Mirrors

CUSTOMER CONTACT

Notes:

PRINTABLE INFO SHEET

Series: Deercreek MAX Ranch
Model: DE3003-P



Standards & Features (continued)

Structured Flow Brushed Nickel Faucets (continued)

Anti-Scald Faucets in Tub/Shower
Shower Drain with Removable Strainer

CABINETRY

Evermore Custom Cabinetry
(KCMA Certified)
Laminate Crescent Edge Countertops
Premium Cabinetry
Mission Style Cabinet Doors
Transitional Cabinet Hardware
Hardwood Moulding on Cabinets
Lined Overhead Cabinets

42" Height Overhead Cabinets

Drawer over Door Base Cabinets
Extended Sink Cabinet
Concealed Cabinet Hinges
Soft Close Drawers

Dovetail Drawers

Base and Center Shelves in Base Cabinets
Base Shelf in Vanities
36" High Bath Vanities

UTILITIES

Plumbed and Wired for Washer
Vented and Wired for Dryer
100 AMP Electrical Service
w/Extended Panel
40 Gallon Electric Water Heater
with Pan
Hi-Efficiency Gas Furnace
White 6-Panel Furnace Door w/Grill
Perimeter Heating System

UTILITIES (continued)

Air Exchanger System for Furnace
Aluminum Heat Ducts
In-Floor Cross-Over Heating System
Copper Wiring Throughout
Main Water Line Shut-Off Valve
Programmable Thermostat
Water Shut-Off Valves
Exterior Water Faucet

FLOORING

Choice of Various Styles of Textured
Carpet:
-Standard 18 oz. Lucerne/Innovations
-Upgrade Styles Available
Rebond Carpet Pad with Tackstrip
Carpet Installation

Vinyl Plank Flooring per print

DiamondFlor Vinyl Flooring per print

BEDROOMS

LED Flush Mount Lights
Egress Window Each Bedroom
Wire Shelving in Wardrobes
Switched LED Light in All Walk-In
Closets

INSULATION

R-22 Fiberglass in Floor
R-19 Fiberglass in Walls
R-31 Avg. Blown in Ceiling

Modular Features

Note: Floorplan may be altered based on building code
Wind Wrap

CUSTOMER CONTACT

Notes:

PRINTABLE INFO SHEET

Series: Deercreek MAX Ranch

Model: DE3003-P



Standards & Features (continued)

Modular Features (continued)

40# Roof Load

Ice Guard

90 MPH Wind Zone C

2x10 Floor Joist 16" O.C.

2x4 Interior Walls

Additional Exterior Receptacle

(1) Exterior Faucet

Low – E Gridded Windows w/ Argon

No Floor Insulation

200 AMP Panel Box

Soft Close Cabinet Doors

No Blinds or Curtains

Phone Jack

CUSTOMER CONTACT

Notes:
