

PRINTABLE INFO SHEET

Series: Timberland Ranch

Model: TL822A



About This Model

Style: Ranch / Bedrooms: 3 / Bathrooms: 2 / Square Feet: 1920

CUSTOMER CONTACT

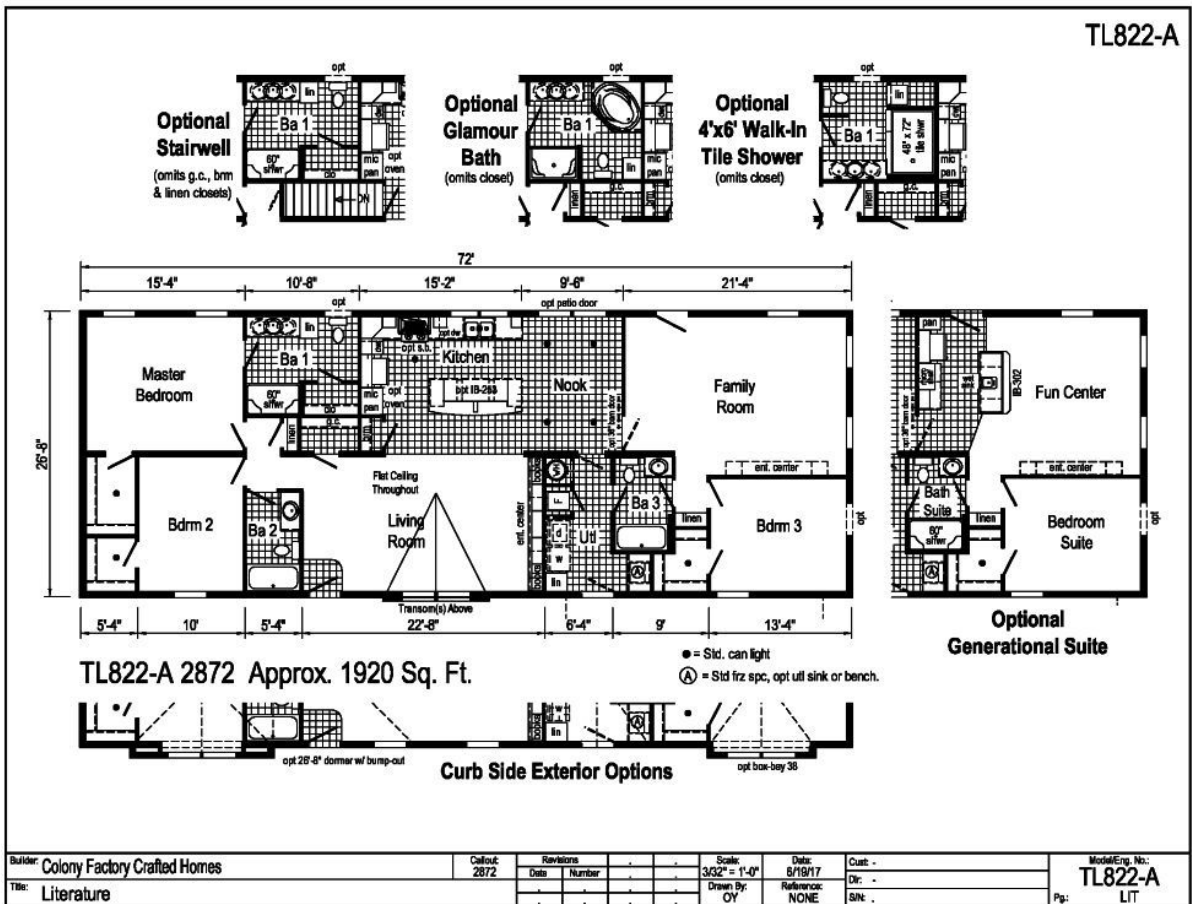
Notes:

PRINTABLE INFO SHEET

Series: **Timberland Ranch**
 Model: **TL822A**



Floorplan



CUSTOMER CONTACT

Notes:

PRINTABLE INFO SHEET

Series: Timberland Ranch
Model: TL822A



Standards & Features

INTERIOR

- Flat Ceiling Throughout
- Stipple Ceiling
- 8'0" Sidewall Height
- Primed Smooth Drywall Throughout
- 6 Recessed LED Lights in Kitchen & Nook
- Glass Light Shades Throughout
- Pre-Hung Door Jambs
- Pinned Mortise Hinges
- Metal Interior Passage Sets
- Floor Mount Door Stops
- Oak Stained Hardwood Window Sills
- Smoke Detectors with Battery Back-Up
- Wire Shelving in Guest Closet
- Designer-Coordinated Window Treatments
- 2" Mini Blinds Throughout
- "Stacked" Cove Moulding in Living Area
- White 6-Panel Interior Doors

EXTERIOR

- Patina Lantern Light at Front Door
- Patina Square Lantern Light at Rear Door
- One GFI-Protected Exterior Receptacle
- Vinyl Dutch Lap Siding
- OSB Sheathing Board Under Siding
- Shingle Roof with 10" Eaves
- Ridgevent Roof Ventilation System
- 38x82 White 6-Panel 4-Lite Steel
- Front Door with a Deadbolt Lock
- 34x82 6-Panel Steel Rear Door with a Deadbolt Lock

EXTERIOR (continued)

- Vinyl Insulated Windows with Grids And Low-E Glass
- 12" Louvered Shutters on Front Door Side
- 10' Dormer with Transoms, Lineals and Vertical Accent
- Window Trim Between Non-Mulled Windows

CONSTRUCTION

- *Energy Star Qualified on Selected Models
- Transverse Floor System:
 - 2x6 - 28 Wide Models
 - 2x8 - 32 Wide Models
- 2x6 Exterior Walls on 16" Centers**
- 30# Roof Load
- Recessed Frame Design

KITCHEN

- 30" Deluxe Black Gas Range
- Stainless & Glass Chef's Signature Range Hood
- Skybridge 4x8 Tile Behind Range To Ceiling
- 18 Cubic Foot, Black No-Frost Refrigerator
- Stainless Steel Sink - 33x19x7
- Empire Brushed Nickel Faucet
- 6 Recessed Lights in Kitchen & Nook
- Skybridge 4x8 Ceramic Backsplash
- Laminate Countertops
- Crescent Laminate Edging
- 1 USB Receptacle

CUSTOMER CONTACT

Notes:

PRINTABLE INFO SHEET

Series: **Timberland Ranch**

Model: **TL822A**



Standards & Features (continued)

BATHS

- One Piece Fiberglass 60" Tub/Shower in 2nd Bath
- One-Piece Fiberglass 60" Shower with Doors in Master Bathroom
- Linen Closet in Master Bathroom
- Deluxe Shower Drape at 60" Tubs
- 1.6 Gallon Per Flush Elongated Toilets
- China Stool, Tank and Lid
- China Sinks with Pop-up Drains
- Lighted Vent Fan
- Empire Brushed Nickel Faucets
- 4" Laminate Backsplash
- Anti-Scald Faucets in Tub/Shower
- Shower Drain with Removable Strainer

CABINETRY

- Evermore Custom Cabinetry (KCMA Certified)
- Choice of Autumn or Messina
- Hardwood Oak Cabinetry
- Upgrade Cabinet Hardware
- Concealed Hinges on All Cabinets
- 2 1/4" Crown Moulding on Overhead Cabinets
- Lined Overhead Cabinets
- Microwave Cabinet
- 42"/30" Staggered Height Overhead Cabinets with Glass Door Cubbie Overheads
- Adjustable Shelves in Overhead Cabinets
- Drawer Over Door Base Cabinets
- Extended Sink Cabinet (where available)

CABINETRY (continued)

- Deluxe Roller Guide Drawer System
- Base and Center Shelves in Base Cabinets
- Base Shelf in Vanities
- 36" High Master Bath Vanity
- 33" High Secondary Vanities

UTILITIES

- Plumb and Wire for Washer
- Wire and Vent for Dryer
- 40 Gallon Electric Water Heater with Pan Programmable Thermostat
- Air Exchanger System for Furnace
- Auto Ignition Gas Furnace:
 - #M1-MB056ABW – 60' and Under
 - #M1-MB070ABW – 64' and Over
- White 6-Panel Furnace Door with Grill
- Aluminum Heat Ducts
- Perimeter Heating System with In-Floor Cross-Over
- 100 AMP Electrical Service
- Copper Wiring Throughout
- Main Water Line Shut-Off Valve
- Water Shut-Off Valves Where Accessible
- One Exterior Water Faucet
- One GFI Protected Exterior Recptacle

FLOORING

- Lucerne/Innovation Carpet
- Rebond Carpet Pad and Tackstrip Throughout Except Kitchen, Bathrooms, and Utility Room

CUSTOMER CONTACT

Notes:

PRINTABLE INFO SHEET

Series: **Timberland Ranch**

Model: **TL822A**



Standards & Features (continued)

FLOORING (continued)

No-Wax Luxflor Vinyl Floor Coverings by Congoleum, Including Foyer

BEDROOMS

Ceiling Lights
Egress Window Each Bedroom
Wire Shelving in Wardrobes
Switched Light in All Walk-In Closets
Bead Board VOG Closet Walls

INSULATION

R-22 Fiberglass Insulation in Floor
R-19 Fiberglass Insulation in Walls
R-31 Avg. Blown Insulation in Ceiling

ENERGY EFFICIENT STANDARDS

Low-E Vinyl Insulate Windows
R-22 Fiberglass Insulation in Floor, R-19 Fiberglass Insulation in Walls, R-31 Avg. Blown Insulation in Ceiling
Fiberglass Exterior Doors

*NOTE: Energy Star qualified Home is not available in Total Electric Homes

**NOTE: Spacing for Framing Members may vary due to Design Requirements

*Select models can be ENERGY STAR Qualified and be ENERGY STAR labeled after undergoing a field site inspection conducted by a manufacturer's field representative following site installation by our Authorized Independent Retailers.

CUSTOMER CONTACT

Notes:
