

## PRINTABLE INFO SHEET

Series: Eastland Prime

Model: A32803-P Eastland Prime



## About This Model

Style: Ranch / Bedrooms: 3 / Bathrooms: 2 / Square Feet: 1576

## CUSTOMER CONTACT

Notes:

---

---

---

---

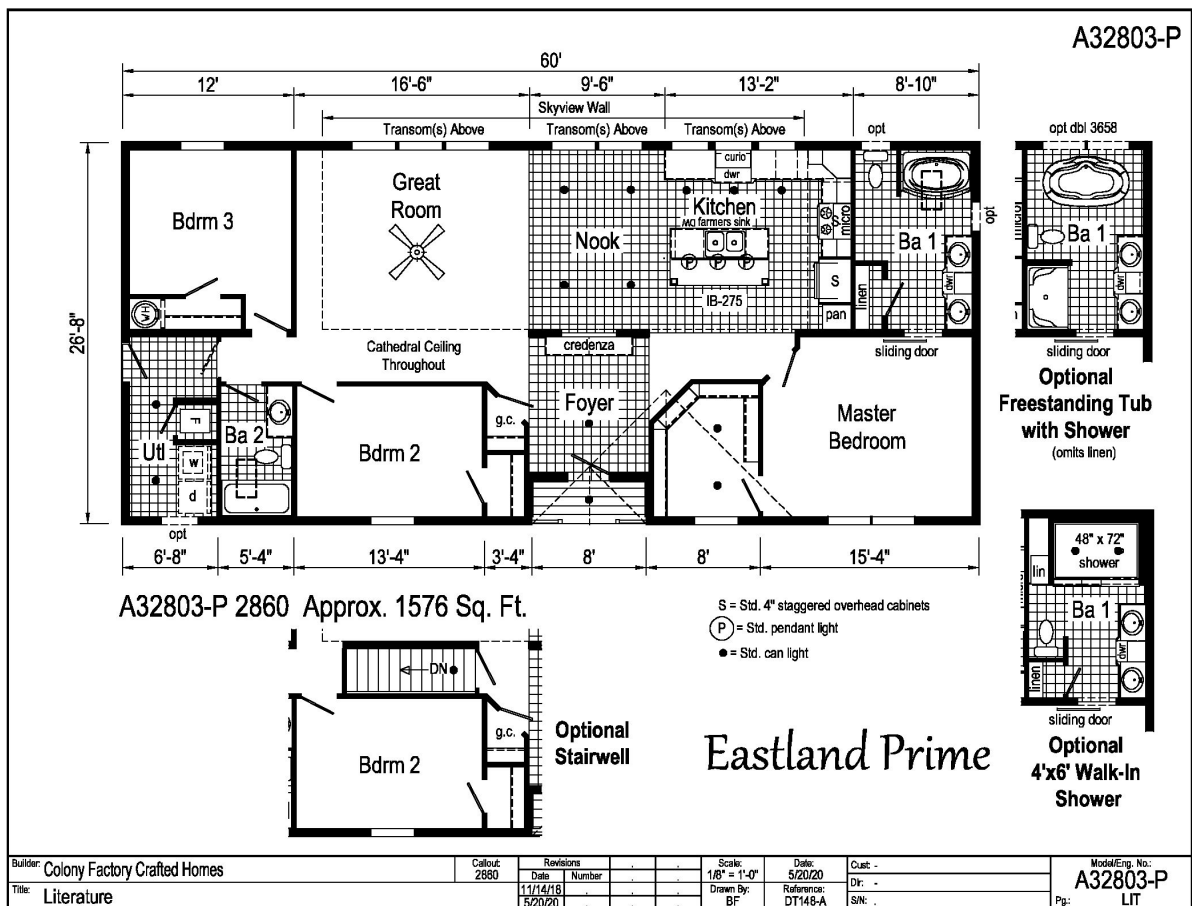
## PRINTABLE INFO SHEET

Series: Eastland Prime

Model: A32803-P Eastland Prime



## Floorplan



## CUSTOMER CONTACT

Notes:

## PRINTABLE INFO SHEET

**Series: Eastland Prime**

**Model: A32803-P Eastland Prime**



## Standards & Features

### INTERIOR

Stipple Ceiling

Cathedral Ceiling -Ranch

Flat Ceiling - Single Section

#### **90" Sidewall Height -Ranch**

8' Sidewall Height - Single Section

Vinyl Wall Coverings on Gypsum Walls

LED Flush Mount Ceiling Lights

Pre-Hung Door Jambs

Mortise Hinges

Metal Interior Passage Sets

Floor Mount Door Stops

Smoke Detectors With Battery Back-Up

Wire Shelving in Guest Closet

Window Treatments

2" Mini Blinds Throughout

White 6-Panel Passage Doors

#### **Sliding Interior Door (per plan)**

3 Industrial Pendant Lights over Island

Skyview Wall with Transoms (Ranch)

Ceiling Fan in Living Room

Foyer Accent Bench (per plan)and Wall

### EXTERIOR

Black Lantern Light at Front & Rear Door

One GFI-Protected Exterior Receptacle

Vinyl Dutch Lap Siding

Sheathing Board Under Siding

Shingle Roof with

4" Eaves & Single Section (14/16)

10" Eaves & Ranch Homes (28/32)

12" Gable End Overhang

### EXTERIOR (continued)

Ridgevent Roof Ventilation System

38x82 Steel 6-Panel Front Door

34x82 Steel 6-Panel Rear Door

Schlage Exterior Locksets Keyed Alike

Mulled Vinyl Insulated Windows w/Grids

12" Louvered Shutters on Front Side

### CONSTRUCTION

2x6 Transverse Floor & 12/14 wide

2x8 Transverse Floor & 16 wide

2x6 Exterior Walls on 16" Centers\*\*

3/4" T&G OSB Floor Decking

20# Roof Load

Recessed Frame Design

### KITCHEN

#### **Black Gold Appliance Package (Gas)**

Black Over the Range Microwave

Curved Front Stainless Steel Sink

Full Ceramic Backsplash at Range Wall

4" Laminate Backsplash Window Wall

Structured Flow Pull Down Faucet

Cabinetry Accent

1 USB Receptacle

### BATHS

Fiberglass Tub/Showers in Bath 2

**Fiberglass Garden Tub/Shower in Master Bathroom**  
Framed Mirrors

#### **2 Light Bath Fixture over Mirrors**

1.6 Gallon Per Flush Elongated Toilets

#### **Square China Lav Sinks**

Double Lav Sinks in Master Bath

## CUSTOMER CONTACT

Notes:

---

---

---

---



## PRINTABLE INFO SHEET

**Series: Eastland Prime**

**Model: A32803-P Eastland Prime**



## Standards & Features (continued)

### Square China Lav Sinks (continued)

Laminate Backsplash in Baths

### Cabinetry Accent

China Stool, Tank and Lid

Lighted Vent Fan in Each Bath

Empire Faucets

Anti-Scald Faucets in Tub/Shower

Shower Drain with Removable Strainer

### CABINETRY

Evermore Custom Cabinetry

(KCMA Certified)

MDF Mission Style Cabinet Doors

Brushed Nickel Cabinet Hardware

Crown Moulding on Kitchen Cabinets

Lined Overhead Cabinets

Laminate Countertops

### Transitional Cabinet Pulls

Concealed Cabinet Hinges

Soft Close Drawer Guides

Base and Center Shelves in Base Cabinets

Base Shelf in Vanities

36" High Bath Vanities

### UTILITIES

Plumbed and Wired for Washer

Vented and Wired for Dryer

100 AMP Electrical Service

30 Gallon Electric Water Heater with Pan

Gas Furnace

White 6-Panel Door w/Grill

### UTILITIES (continued)

Air Exchanger System for Furnace

Aluminum Heat Ducts

In-Floor Cross-Over Heating System

Copper Wiring Throughout

Main Water Line Shut-Off Valve

Programmable Thermostat

### FLOORING

Choice of Various Styles of Textured

Carpet:

-Standard 18 oz. Lucerne/Innovations

-Upgrade Styles Available

Rebond Carpet Pad with Tackstrip

Carpet Installation

DiamondFlor & Vinyl Floor Coverings

### Entry Foyer Vinyl

### BEDROOMS

Switched Receptacle

Vinyl Wall Coverings in all Bedrooms

Egress Window Each Bedroom

Wire Shelving in Wardrobes

Switched Light in All Walk-In Closets

### INSULATION

R-14 Fiberglass in Floor

R-19 Fiberglass in Walls

R-25 Avg. Blown in Ceiling -Single

R-28 Avg. Blown in Ceiling & Ranch

### Modular Features

Note: Floorplan may be altered based on building code

Drywall

OSB Wrap

## CUSTOMER CONTACT

Notes:

---

---

---

---

## PRINTABLE INFO SHEET

**Series: Eastland Prime**

**Model: A32803-P Eastland Prime**



## Standards & Features (continued)

### Modular Features (continued)

Wind Wrap

40# Roof Load

Ice Guard

5/12 Roof Pitch

90 MPH Wind Zone C

2x10 Floor Joist 16" O.C.

2x4 Interior Walls

Architectural Shingles

Additional Exterior Receptacle

(1) Exterior Faucet

Low & E Gridded Windows w/ Argon

R-31 Ceiling Insulation

No Floor Insulation

Perimeter Heat

Water Shut Offs & Where Available

200 AMP Panel Box

Hi-Efficiency Furnace

Premium Cabinetry

Premium Moulding Package

No Blinds or Curtains

Structured Flow Faucets

Drawer over Door Cabinet Construction

Soft Close Cabinet Doors

Phone Jack

\*\*Note Skyview Wall with Transoms Not Available

## CUSTOMER CONTACT

Notes:

---

---

---

---