

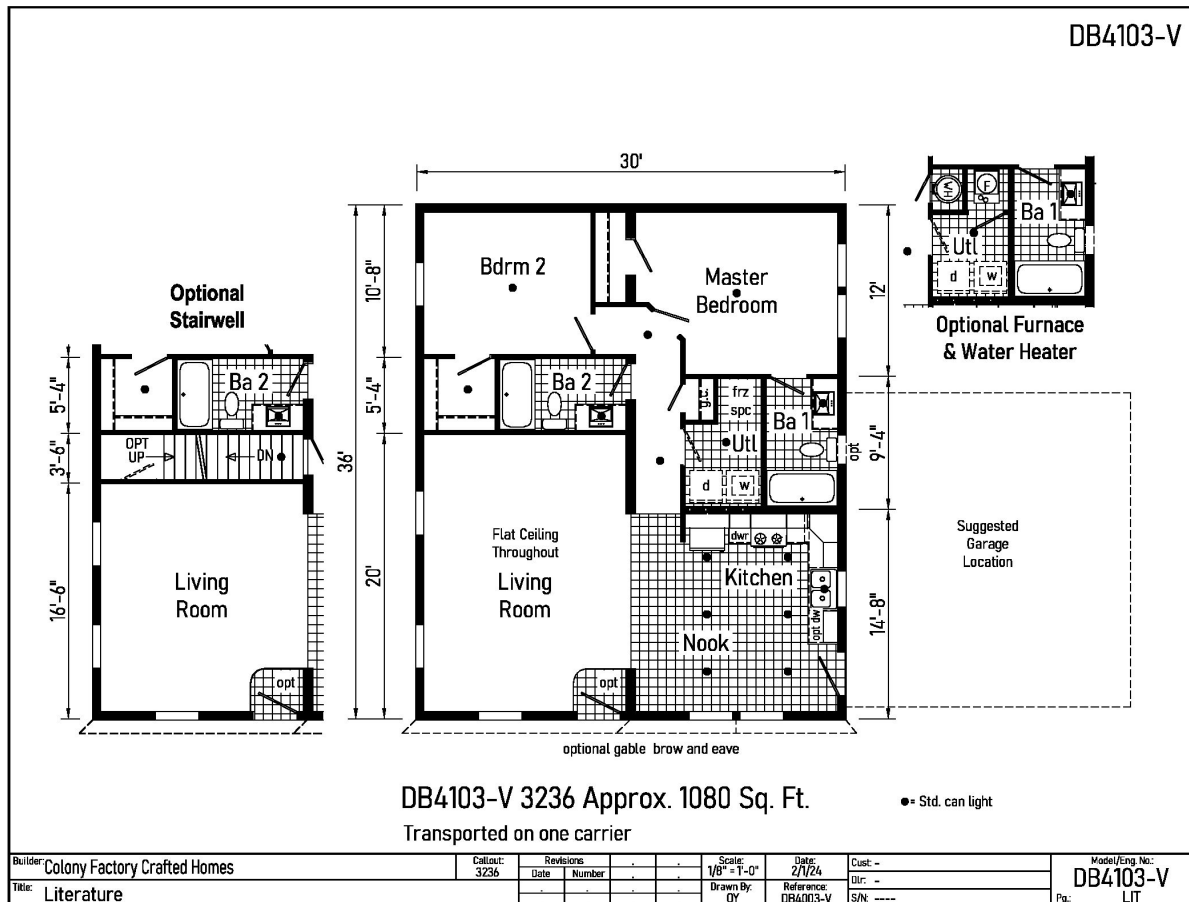
PRINTABLE INFO SHEET

Series: Beacon Ranch Modular

Model: DB4103-V



DB4103-V



About This Model

Style: Ranch / Bedrooms: 2 / Bathrooms: 2 / Square Feet: 1080

CUSTOMER CONTACT

Notes:

PRINTABLE INFO SHEET

Series: Beacon Ranch Modular
Model: DB4103-V



Standards & Features

INTERIOR

Flat Ceiling Throughout
Coveless Smooth Ceiling
8' Sidewall Height
Primed Smooth Drywall Throughout
LED Flush Mount Ceiling Lights
Pre-Hung Door Jambs
Mortise Hinges
Metal Interior Passage Sets
Floor Mount Door Stops
Smoke Detectors With Battery
Back-Up
Wire Shelving in Guest Closets
Residential Switches and Receptacles
White 6-Panel Passage Doors

EXTERIOR

Patina Square Light at Front Door
Seeded Glass Light at Rear Door
Two GFI-Protected Exterior Receptacle
Vinyl Dutch Lap Siding
OSB Sheathing Under Siding w/
Wind Wrap
5/12 Architectural Shingle Roof
with 10" Eaves
Ice Shield
8" Gable End Overhang
Ridgevent Roof Ventilation System
38x82 6-Panel Front Door
38x82 6-Panel Rear Door
Schlage Exterior Locksets Keyed Alike
Mulled Vinyl Insulated Windows w/Grids Low-E with Argon

EXTERIOR (continued)

12" Raised Panel Shutters on Front
Door Side

CONSTRUCTION

2x10 Transverse Floor on 16" center**
2x6 Exterior Walls on 16" Centers**
¾" T&G OSB Floor Decking
40# Roof Load
90 Mile Exposure C Wind Load Design

KITCHEN

30" Deluxe Black Gas Range
Power Range Hood with Light
18 Cubic Foot Black, No-Frost Refrigerator
Stainless Steel Sink - 33x19x7
Structured Flow Hi-Rise Faucet
1 USB Receptacle

BATHS

60" 1-Piece Fiberglass Tub/Showers
1.6 Gallon Per Flush Elongated Toilets
China Stool, Tank and Lid
Lighted Vent Fan in Each Bath
Structured Flow Faucets
Square China Lav Sinks
Anti-Scald Faucets in Tub/Shower
Shower Drain w/ Removable Strainer

CABINETRY

Mission Style Cabinet Doors
Premium Cabinetry
Brushed Nickel Cabinet Hardware
Crown Moulding on Kitchen Cabinets
Lined Overhead Cabinets

CUSTOMER CONTACT

Notes:

PRINTABLE INFO SHEET

Series: Beacon Ranch Modular
Model: DB4103-V



Standards & Features (continued)

CABINETRY (continued)

42" Overhead Cabinets
Laminate Countertops & Backsplash
Soft Close Concealed Cabinet Hinges
Dovetail Drawers
Soft Close Drawer Guides
Base Shelves in Base Cabinets
Base Shelf in Vanities
36" High Bath Vanities

UTILITIES

Perimeter Heat Registers & Boots
Plumbed and Wired for Washer
Wired for Dryer
200 AMP Electrical Service
Copper Wiring Throughout
Programmable Thermostat
Exterior Water Faucet
Water Shut-off Valves - Where Available
Telephone Jack

FLOORING

Choice of Various Styles of Textured Carpet:
-Standard 18 oz. Lucerne/Innovations
-Upgrade Styles Available
Rebond Carpet Pad with Tackstrip
Carpet Installation
DiamondFlor & Vinyl Floor Coverings

BEDROOMS

Switched Receptacle
Egress Window Each Bedroom
Wire Shelving in Wardrobes

BEDROOMS (continued)

Switched Light in All Walk-In Closets

INSULATION

R-19 Fiberglass in Walls
R-31 Avg. Blown in Ceiling

CUSTOMER CONTACT

Notes:
